

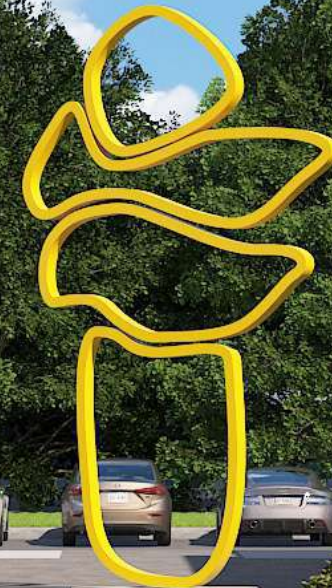
INTRODUCING
HARBOR VILLAGE

PERFUMERY

PET GROOMING

NAILS

BOC



1250 SW Gatlin Blvd



3rd
FASTEST SELLING
COMMUNITIES in
the US during COVID
Forbes, 2020



4th
SAFEST PLACE
to LIVE in the US
Money Inc, 2020



3rd
BEST PLACE
to RETIRE
US News, 2020



TOP 10
BEST PLACES TO LIVE
WITH A FAMILY
US News, 2021

PORT ST LUCIE

America's Picture Perfect Town



A MARKET FUELED BY RESIDENTIAL EXPANSION

Homebuilders are planning

+20,000 new homes

in tradition



Matamy Homes is building the first Phase of Manderlie, a Master community of

7,500 homes

Del Webb[®]
Del Webb is building
920 homes

D·R·HORTON[®]
America's Builder

Dr Horton is building the Preserve, with
220 homes



GL Homes is building the second Phase of Riverland, a Master community of
11,000 homes



Pulte Homes is building Heron Preserve, with
420 homes



Ryan Homes and Maronda are building Crosstown, with
429 homes

Strong Demographics

TOTAL POPULATION

3 MILES

63,682

5 MILES

129,058

7 MILES

179,029

DAYTIME POPULATION

49,478

93,654

135,372

HOUSEHOLDS

22,086

46,974

67,166

AVERAGE HH INCOME

55,668

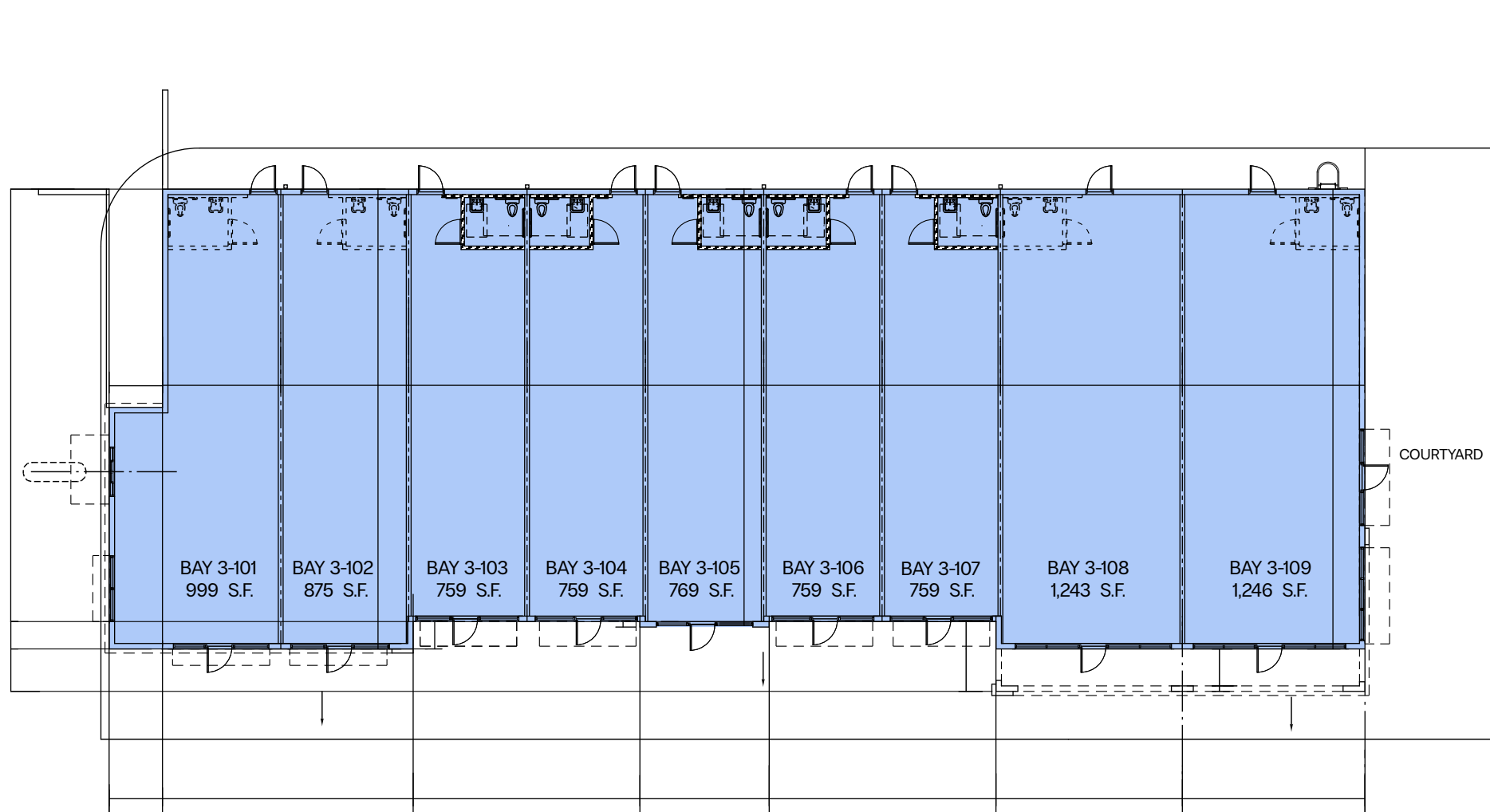
53,668

52,197

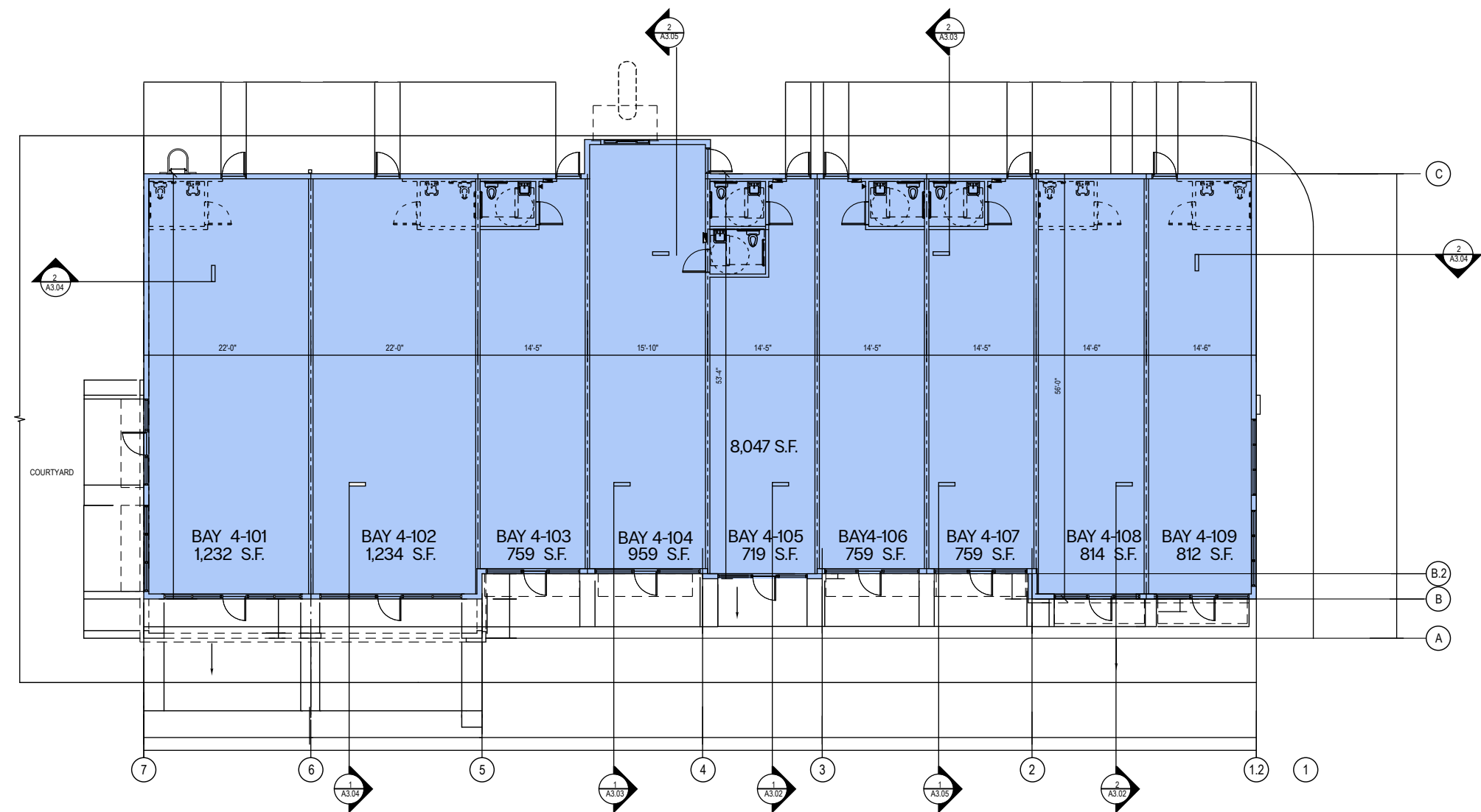


HARBOR VILLAGE

SITEPLAN



FLOOR PLAN BUILDING #3



FLOOR PLAN BUILDING #4



GREAT VISIBILITY

from Gatlin Blvd.

CONVENIENT ACCESS

from West and East bound lanes

AMPLE PARKING LOT

49,500

Cars per day on Gatlin Blvd.

525 ft

of prominent frontgate on Gatlin Blvd.

Units from

759 sf

Restaurant Space
Available

Medical Space
Available

Outdoor patio



HARBOR VILLAGE



Developed by



B&B CAPITAL GROUP

BOULTON
COMMERCIAL REAL ESTATE

GIVE US A CALL 954 509-3741