



## 126/55 Flemington Road North Melbourne VIC

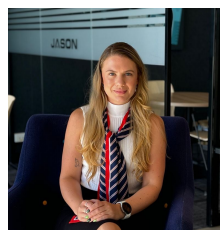
Located on prominent Flemington Road, this well-presented consulting suite offers a convenient and highly accessible space in the heart of North Melbourne. Positioned within Melbourne's established medical and education precinct near Royal Melbourne Hospital and University of Melbourne, the property benefits from excellent tram access at the front door and easy connectivity to the Melbourne CBD. Ideal for medical professionals or general office users seeking a practical inner-city location.

### Key Features

- Floor area of approx. 40 m<sup>2</sup>
- Reception and waiting area
- Two consultation rooms with sinks, privacy curtains &

[For full version visit the website](https://www.jasonrealestate.com.au)

**Type** : Offices  
**Price** : CONTACT AGENT  
**Building Size** : 40 sqm  
**View** : <https://www.jasonrealestate.com.au/lease/vic/inner-city/north-melbourne/commercial/offices/8650970>



**Eimear Quaid**  
03 9304 1444



**Andreas Belbasis**  
03 9304 1444