

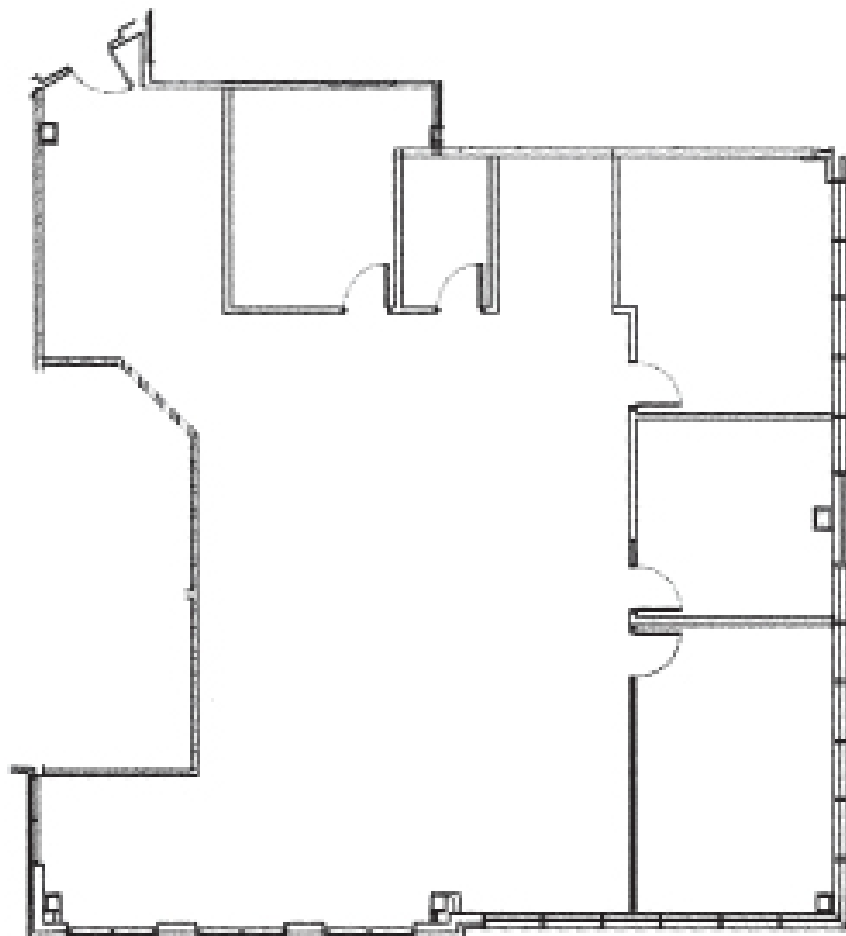
# 1400 CRESCENT GREEN

Cary, NC 27518

**AVAILABLE**

Third Floor  
Suite 320

3,107 SF



**BRET MULLER**

919.523.4200

[bmuller@capitalassociates.com](mailto:bmuller@capitalassociates.com)

**WES JOHNSON**

919.422.4853

[wjohnson@capitalassociates.com](mailto:wjohnson@capitalassociates.com)

