



Volvo Office Park

1210-1228 Progressive Drive
 Chesapeake, Virginia 23320

Property Highlights

- Five Building Office Park with exterior signage and attractive landscaping
- Competitive Rental Rate net of janitorial
- Abundant Parking available
- Common Area Restrooms
- Small suites available

Property Overview

Introducing 1210-1228 Progressive Drive, an impressive five-building office park offering the perfect blend of functionality and aesthetics. This premier property boasts exterior signage and meticulously manicured landscaping, creating an inviting and professional environment for tenants. With competitive rental rates that are exclusive of janitorial services, this space provides exceptional value.

Property

Rental Rate:	\$20.00/RSF, MG
Building Size:	49,942 RSF
Available:	1,178 - 2,509 RSF
Lot Size:	4.2 Acres

Availability	Suite	RSF
1226 Progressive Dr	102	1,178 RSF
1228 Progressive Dr	102	2,509 RSF

For More Information

Patrick L. Reynolds, CCIM, SIOR

O: 757 216 8438
 patrickreynolds@naidominion.com

Matt Wilbricht

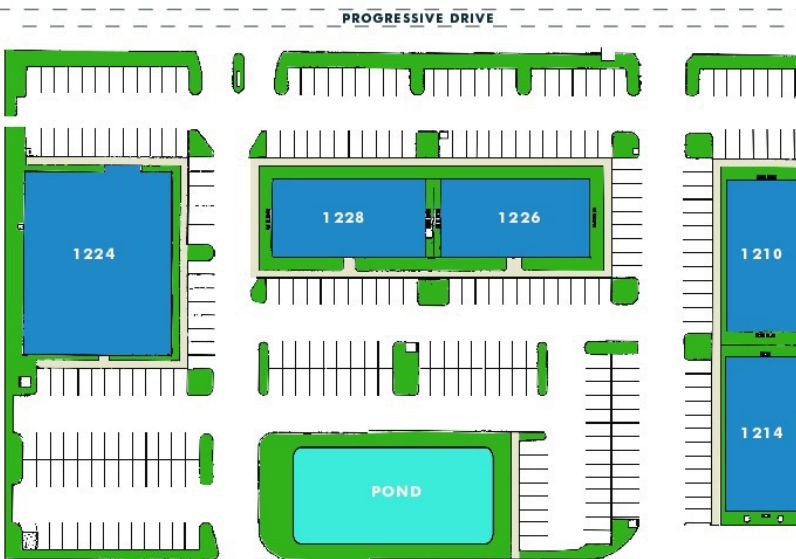
O: 757 216 8438
 mattwilbricht@naidominion.com

BROCHURE

1210-1228 Progressive Drive, Chesapeake, VA 23320



SITE PLANS

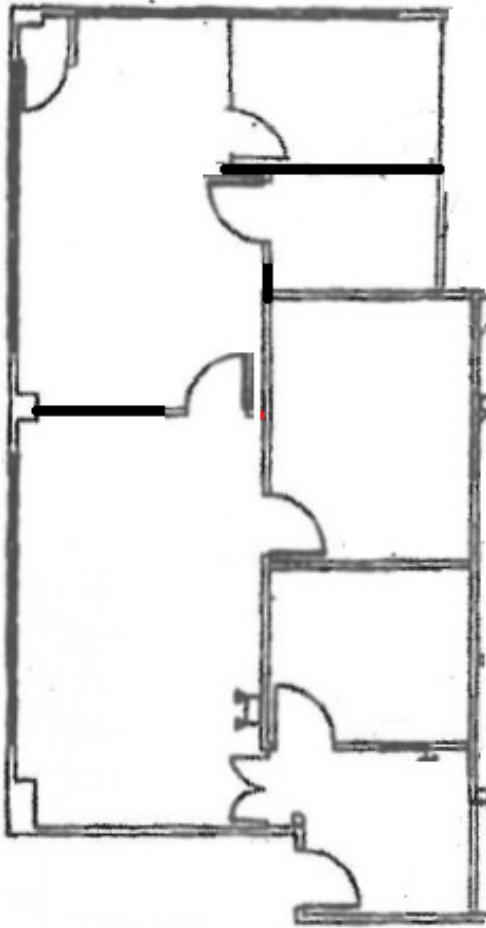


BROCHURE

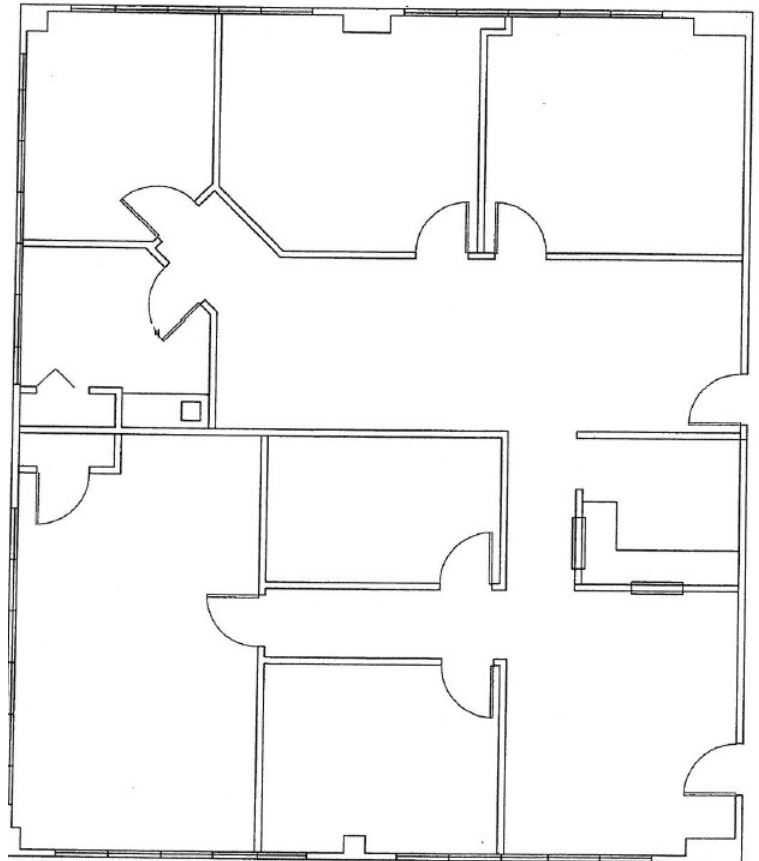
1210-1228 Progressive Drive, Chesapeake, VA 23320

We obtained the information above from sources we believe to be reliable. However, we have not verified its accuracy and make no guarantee, warranty or representation about it. It is submitted subject to the possibility of errors, omissions, change of price, rental or other conditions, prior sale, lease or financing, or withdrawal without notice. We include projections, opinions, assumptions or estimates for example only, and they may not represent current or future performance of the property. You and your tax and legal advisors should conduct your own investigation of the property and transaction.

**1226 Progressive
Suite 102- 1,178 RSF**



**1228 Progressive
Suite 102- 2,509 RSF**

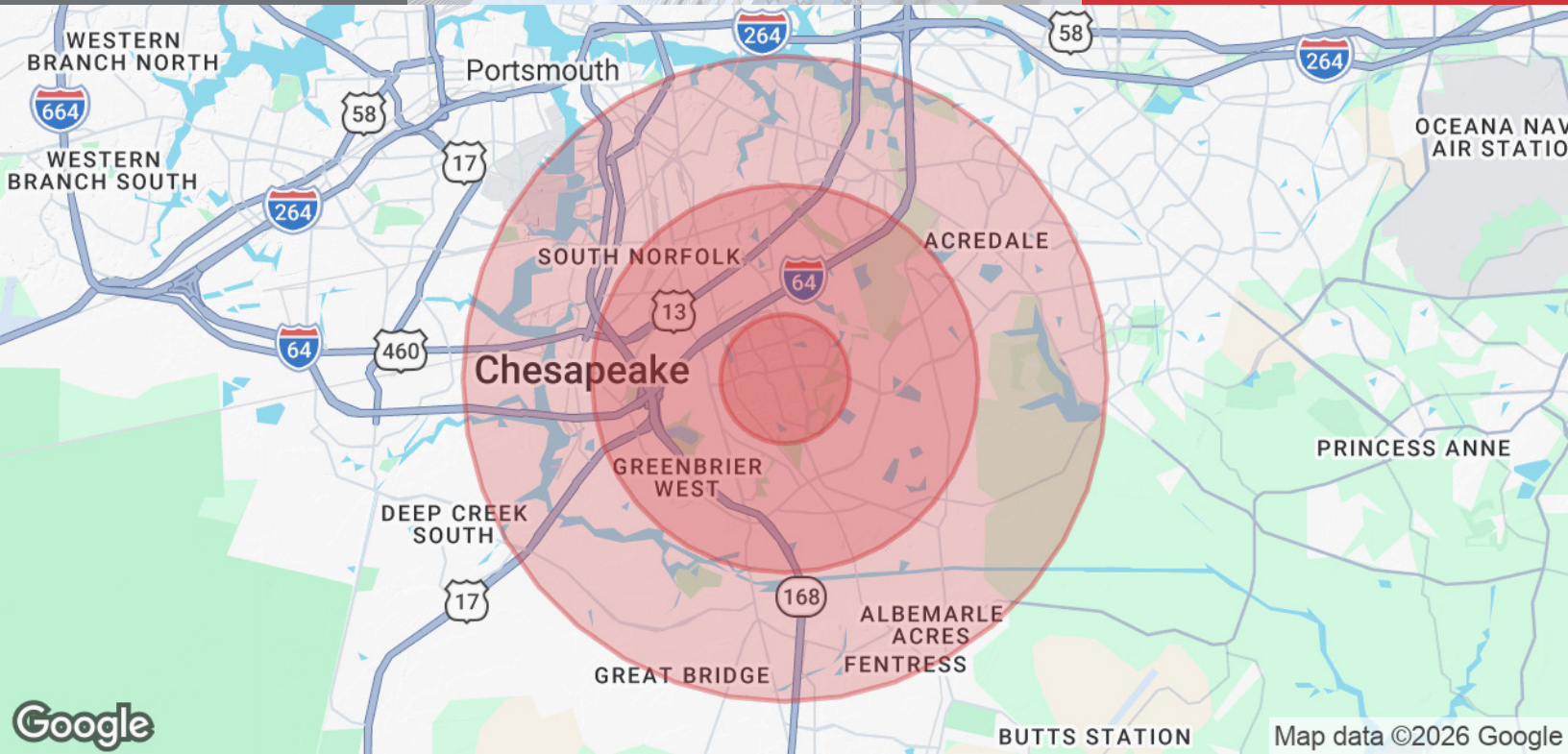




BROCHURE

1210-1228 Progressive Drive, Chesapeake, VA 23320

We obtained the information above from sources we believe to be reliable. However, we have not verified its accuracy and make no guarantee, warranty or representation about it. It is submitted subject to the possibility of errors, omissions, change of price, rental or other conditions, prior sale, lease or financing, or withdrawal without notice. We include projections, opinions, assumptions or estimates for example only, and they may not represent current or future performance of the property. You and your tax and legal advisors should conduct your own investigation of the property and transaction.



Population

	1 Mile	3 Miles	5 Miles
Total Population	6,764	68,645	192,756
Average Age	34.8	35.3	35.5
Average Age (Male)	33.4	33.3	33.4
Average Age (Female)	35.3	36.8	37.2

Households & Income

	1 Mile	3 Miles	5 Miles
Total Households	2,753	27,231	72,570
# of Persons per HH	2.5	2.5	2.7
Average HH Income	\$79,651	\$70,851	\$71,631
Average House Value	\$298,733	\$280,598	\$283,394

2020 American Community Survey (ACS)

BROCHURE

1210-1228 Progressive Drive, Chesapeake, VA 23320

We obtained the information above from sources we believe to be reliable. However, we have not verified its accuracy and make no guarantee, warranty or representation about it. It is submitted subject to the possibility of errors, omissions, change of price, rental or other conditions, prior sale, lease or financing, or withdrawal without notice. We include projections, opinions, assumptions or estimates for example only, and they may not represent current or future performance of the property. You and your tax and legal advisors should conduct your own investigation of the property and transaction.