



*Representative Photo

QUEENS COURT SUITE 403

800 BETHEL STREET, SUITE 403

HONOLULU, HI 96813

CBRE

QUEENS COURT SUITE 403

800 BETHEL STREET, SUITE 403



CONTENTS

01

Executive
Summary

02

Property
Description

03

Location
Overview

04

Market
Overview

EXECUTIVE SUMMARY

THE OFFERING

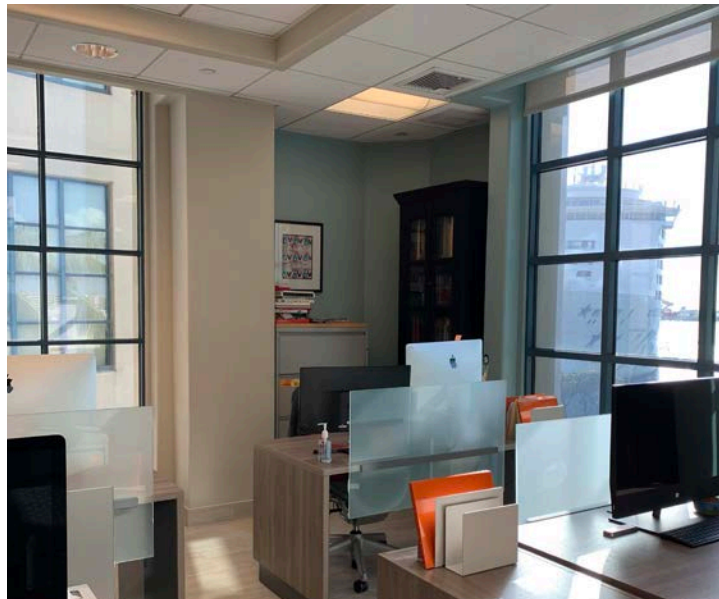
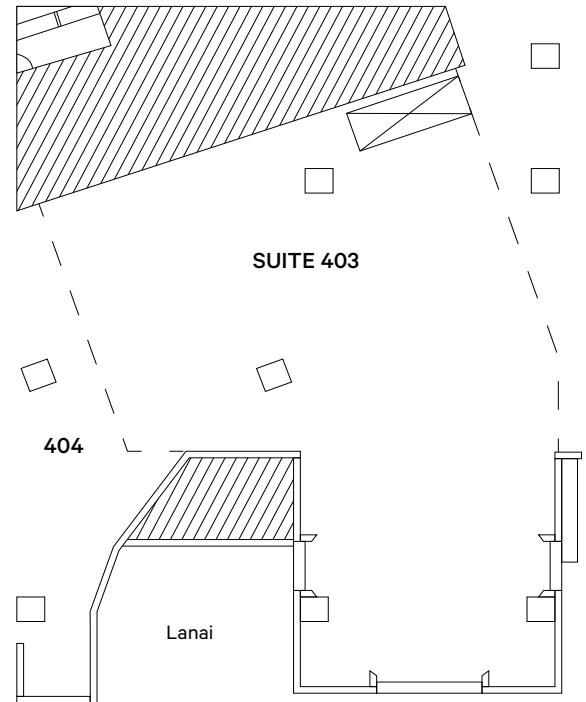
CBRE is pleased to present the opportunity to acquire Queens Court – Suite 403, a well located office condominium in the heart of Downtown Honolulu’s Central Business District. The Property consists of approximately 1,277 square feet, plus a private ±50 square foot lanai, offering a rare combination of functional office space and outdoor exposure in an established building.

Suite 403 is ideally suited for owner users, small professional firms, or investors seeking stable occupancy within a highly supply constrained submarket. The Property benefits from proximity to government offices, financial institutions, courthouses, and the Honolulu harbor, positioning it as a strategic location for legal, professional services, consulting, and related office users.

The offering represents an attractive opportunity to acquire a fee simple office condominium in Downtown Honolulu with long term value supported by limited competing inventory, walkability, and enduring demand drivers.

INVESTMENT HIGHLIGHTS

- + Fee Simple Office Condominium in Honolulu CBD
- + Flexible User Profile: Ideal for Owner User or Small Investor
- + Prime Downtown Location Near Courts, State & City Offices
- + Limited Competing Inventory for Small Office Ownership



PROPERTY DESCRIPTION

PROPERTY OVERVIEW

Queens Court Suite 403 is a fourth floor office condominium within a professionally managed building located along Merchant Street in Downtown Honolulu. The suite offers efficient floor layout suitable for open concept office, conference space, or open workstations, with natural light and direct access to a private lanai.

The Property is situated in an established commercial corridor characterized by a blend of office, residential, retail, and civic uses. Ownership benefits include long term control of occupancy costs, insulation from rising rental rates, and the ability to customize the space to meet operational needs.

The building's central location and accessibility make it attractive to tenants and owner users seeking proximity to downtown institutions without the premium pricing of larger Class A towers.



TMK
(1) 2-1-2-26-12



ZONING
BMX-4



AOAO FEES
\$1,846.40 / MONTH



RPT
\$542 / MONTH



YEAR BUILT
1994



PRICE
\$825,000



PARKING
1 STALL



SIZE
1,277 SF PLUS
50 SF LANAI

Address 800 Bethel St , Ste 403
Honolulu, HI 96813

Market
Submarket Honolulu/ CBD

Square Footage 1,277 SF
50 SF Lanai

Year Built 1994

Parking (1) Deeded Parking at Harbor Court

Operating Expenses Electricity is seperatly metered

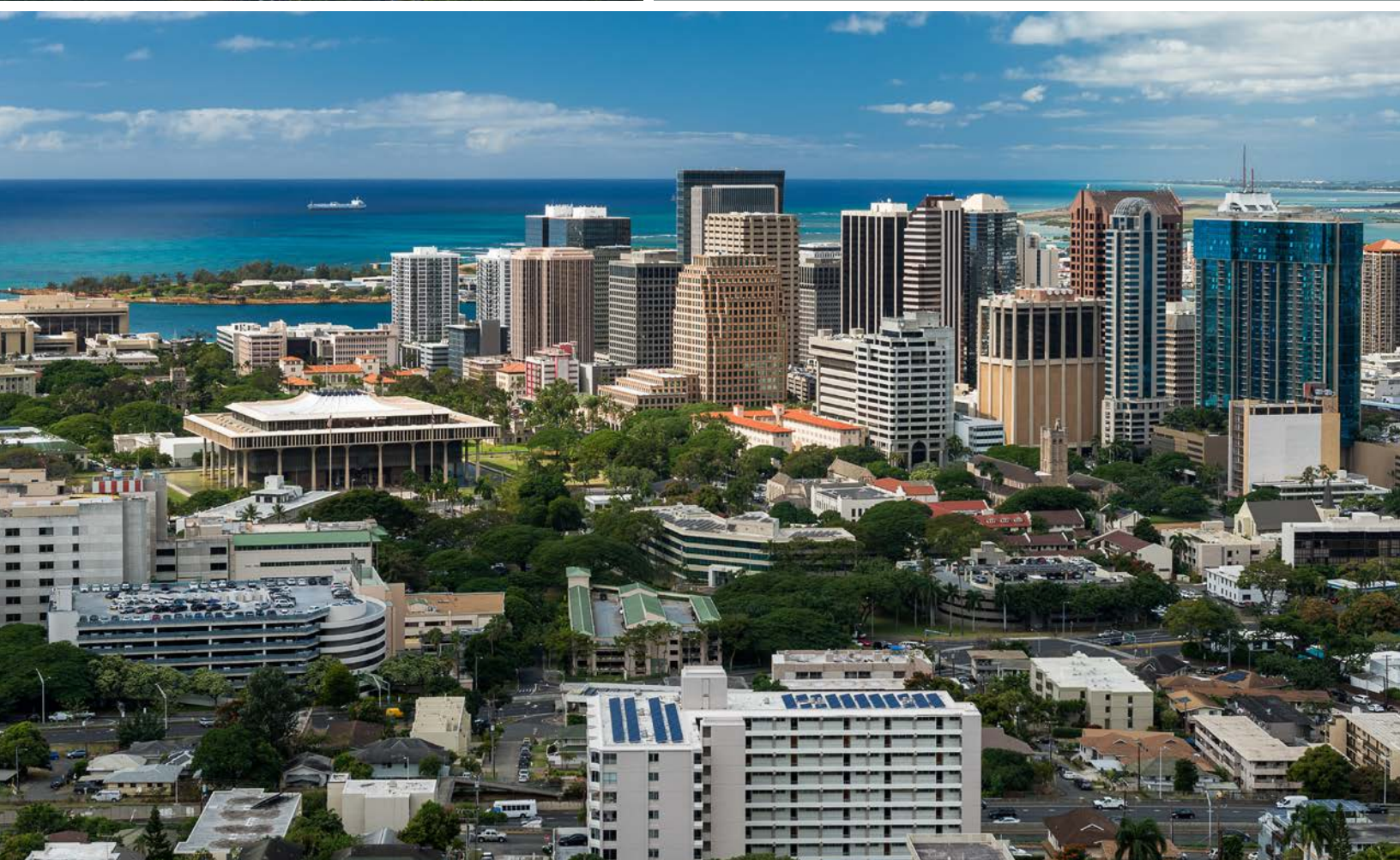
Taxes \$542 / month



LOCATION OVERVIEW

Queens Court is located at 800 Bethel Street, within the core of Downtown Honolulu's Central Business District. The area serves as the governmental, legal, and financial hub of Hawaii, anchored by nearby State and City offices, courthouses, banks, and professional services firms.

The Property benefits from excellent regional accessibility via Nimitz Highway, Ala Moana Boulevard, and Pali Highway, as well as walkable access to restaurants, retail, and public services. Downtown Honolulu continues to experience sustained demand from small office users seeking centrally located, efficient spaces within a highly constrained ownership market.

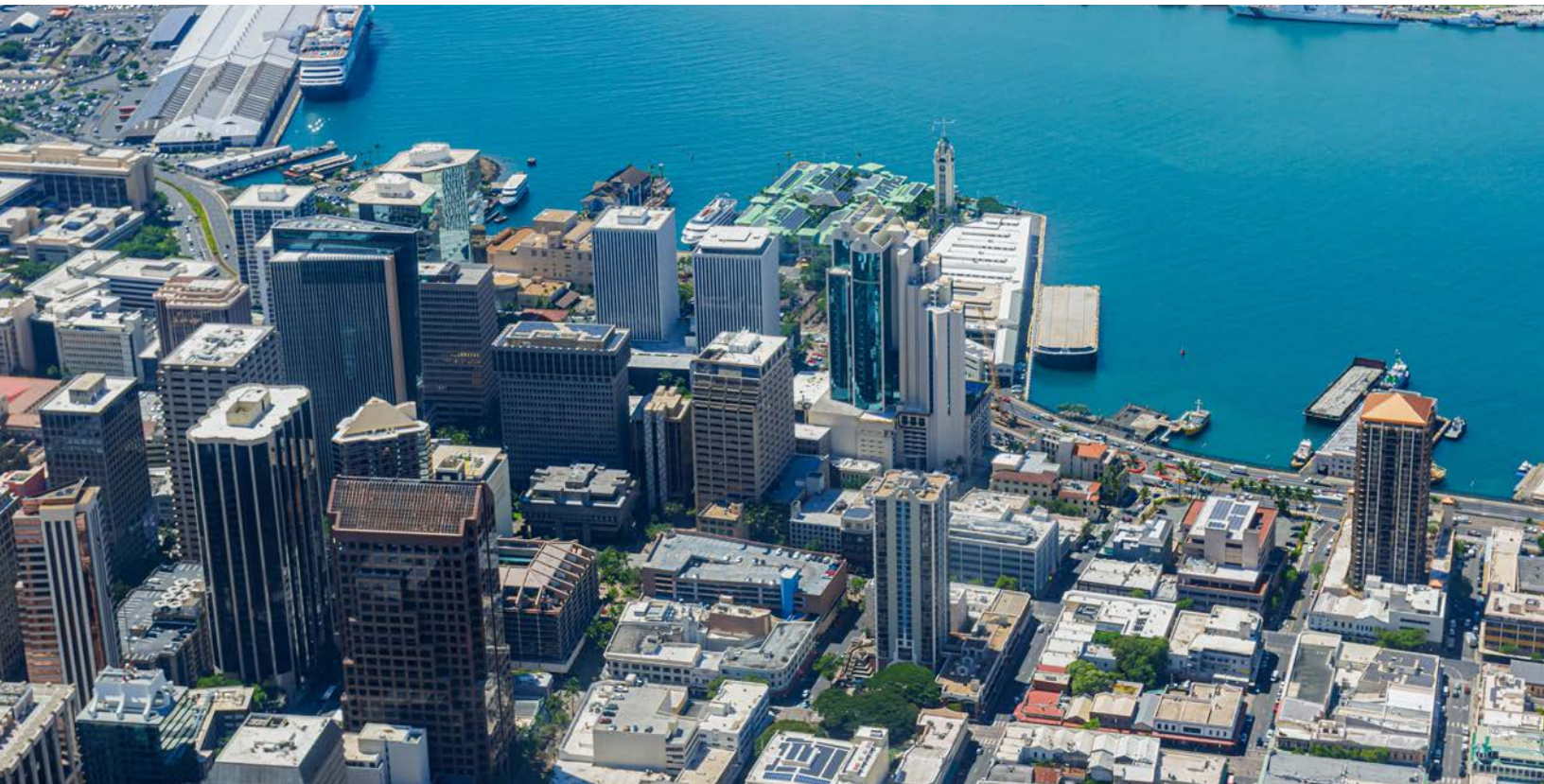


MARKET OVERVIEW

Downtown Honolulu remains one of the most established and supply constrained office submarkets in Hawaii. Development of new office product is limited by zoning constraints, high construction costs, and a focus on residential and mixed use development. As a result, demand for small office condominiums and owner user opportunities has remained resilient.

Office condominium ownership continues to appeal to professionals seeking cost stability, long term value preservation, and control over their workspace. Properties such as Queens Court Suite 403 benefit from these dynamics, offering a scarce ownership opportunity within a mature and essential commercial district.

Queens Court Suite 403 sits at the center of what's next. With the Honolulu Rail Transit corridor bringing direct connectivity to Kaka'ako and Ala Moana area. The property is situated between the future Chinatown and Downtown stations just steps away, this is a rare chance to own in a submarket that's only becoming more connected, more relevant, and more valuable.



QUEENS COURT SUITE 403

800 BETHEL STREET , SUITE 403

INVESTMENT CONTACTS

Matthew D. McKeever

Senior Associate
CBRE | Capital Markets
RS-80252
T +1 808 541 5148
matthew.mckeever@cbre.com

Austin O'Leary

Associate
CBRE | Advisory &
Transaction Services
RS-83544
T +1 808 497 2921
austin.oleary@cbre.com



CBRE

© 2026 CBRE, Inc. All rights reserved. This information has been obtained from sources believed reliable but has not been verified for accuracy or completeness. CBRE, Inc. makes no guarantee, representation or warranty and accepts no responsibility or liability as to the accuracy, completeness, or reliability of the information contained herein. You should conduct a careful, independent investigation of the property and verify all information. Any reliance on this information is solely at your own risk. CBRE and the CBRE logo are service marks of CBRE, Inc. All other marks displayed on this document are the property of their respective owners, and the use of such logos does not imply any affiliation with or endorsement of CBRE. Photos herein are the property of their respective owners. Use of these images without the express written consent of the owner is prohibited. CPM 800 Bethel St_BRO_McKeever_v04_TLJ 04/07/26-initial
MM:RMP_800 Bethel St_BRO_McKeever_v04_TLJ_04.726