



Industrial/Flex Space Available for Lease



9180 South Sandy Parkway, Suite D & E

Sandy, UT 84070 Building 5 (11,093 SQ. FT.)

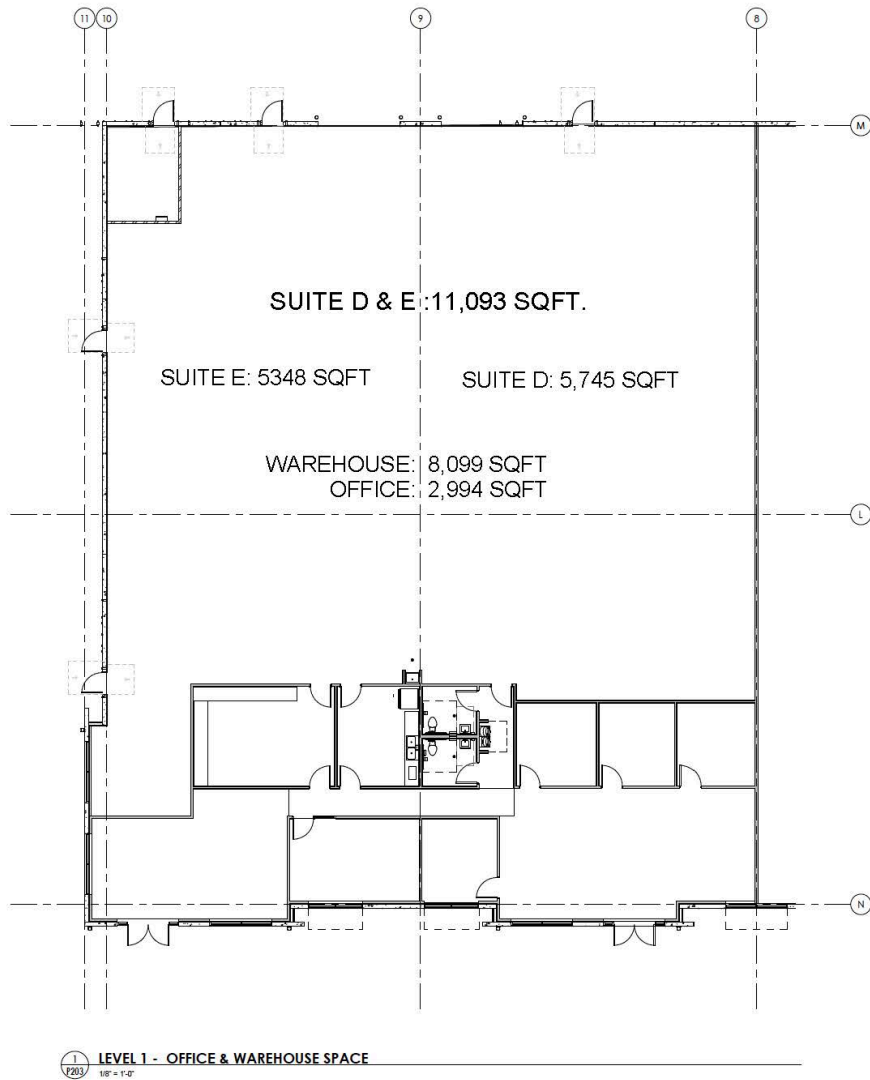
This space offers a combination of warehouse, professional conference spaces and private offices. This coveted location on Sandy Parkway (500 West) provides easy access to I-15 from 9000 South.

Available 1/1/27

- 10,093 SF, includes 2,994 SF Dedicated Office
- 1 Drive-In Bay
- Open Office
- Reception Area
- Break Room & Laboratory
- Private Restrooms
- Mountain Views
- Central Air and Heating



Floorplan:



For additional information, please contact us:

Steven Urry
801.541.1113
urry@synergydevllc.com



Soren Urry
435.503.0496
soren@synergydevllc.com

