



**2230
LITHONIA
INDUSTRIAL
BLVD**
LITHONIA, GA
30058

Property For Lease
14,442+/- SF Warehouse

CLYDE PURMORT
Advisor
941.323.0763
cpurmort@kingindustrial.com

KING
Industrial
Realty, Inc.

Industrial • Commercial • Investment
404.942.2000 | kingindustrial.com

FOR LEASE
14,442+/- SF



PROPERTY HIGHLIGHTS

- 1,135+/- SF Office Space
- 1 Dock Door & 1 Drive-In Door
- 14' - 18' Clear Ceiling Height in Warehouse
- Additional 2 Bay Garage & 1,750+/- SF Dockside Shed on Property
- Ability to Add Additional Outside Storage
- Monument Signage on Lithonia Industrial Blvd

OFFERING SUMMARY

Available SF:

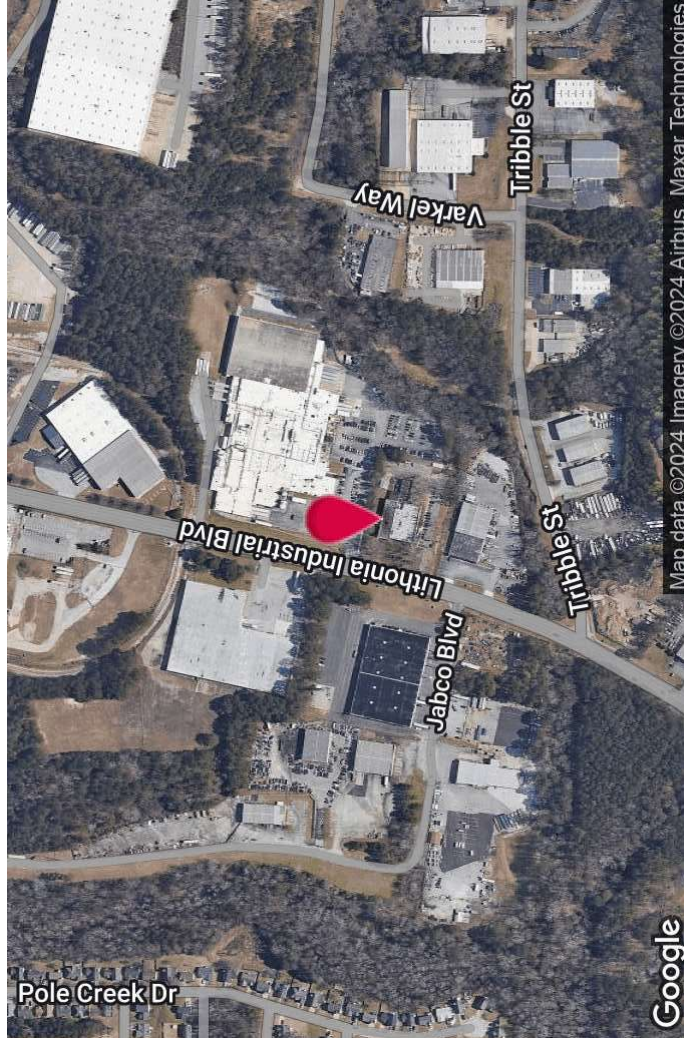
14,442 SF

Lot Size:

2.7 Acres

Zoning:

M-1



Google

CLYDE PURMORT

Advisor

941.323.0763

cpurmort@kingindustrial.com

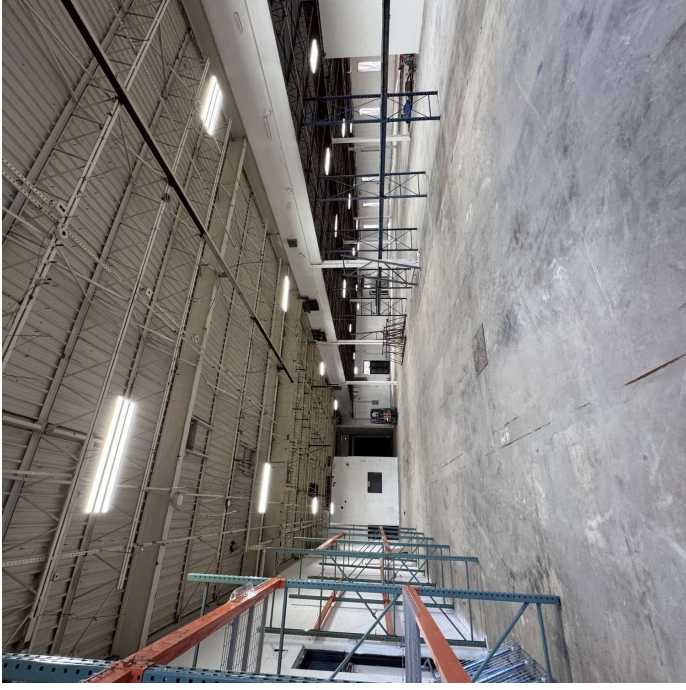
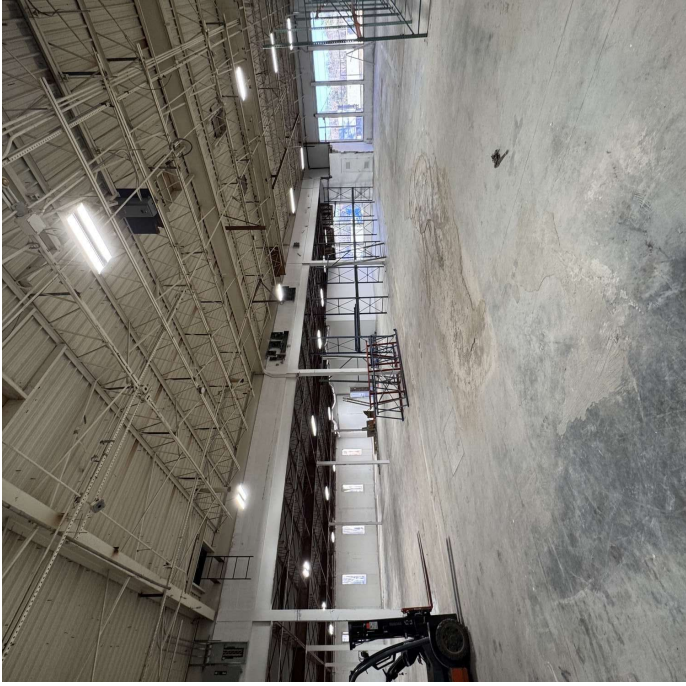
Every effort has been made to provide accurate information, but no liability is assumed for errors or omissions.

King
Industrial
Realty, Inc.

CORFAC
INTERNATIONAL

Industrial • Commercial • Investment
404.942.2000 | kingindustrial.com

WAREHOUSE PHOTOS



CLYDE PURMORT

Advisor

941.323.0763

cpurmort@kingindustrial.com

Every effort has been made to provide accurate information, but no liability is assumed for errors or omissions.

King
Industrial
Realty, Inc.
CORFAC
INTERNATIONAL

Industrial • Commercial • Investment
404.942.2000 | kingindustrial.com

FRONT AREA
PHOTOS



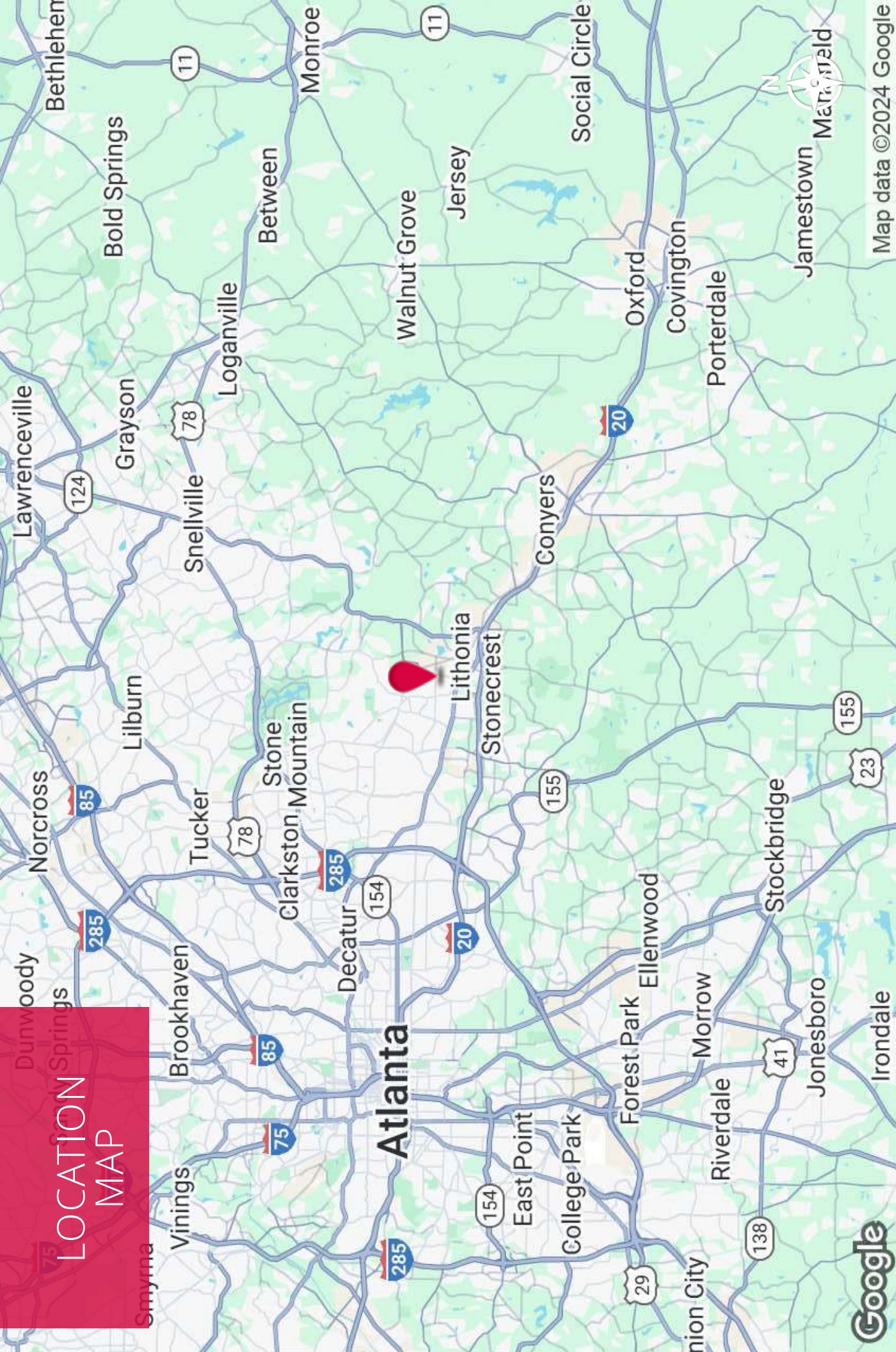
CLYDE PURMORT

Advisor

941.323.0763

cpurmort@kingindustrial.com

Every effort has been made to provide accurate information, but no liability is assumed for errors or omissions.



Map data ©2024 Google

CLYDE PURMORT

Advisor

941.323.0763

cpurmort@kingindustrial.com

Every effort has been made to provide accurate information, but no liability is assumed for errors or omissions.



Industrial • Commercial • Investment
404.942.2000 | kingindustrial.com



EXCLUSIVELY LISTED BY:

CLYDE PURMORT

Advisor

cpurmort@kingindustrial.com

941.323.0763



Industrial • Commercial • Investment
404.942.2000 | kingindustrial.com