

ARBOR TOWN SQUARE

A 4,000 SF Office Sublease in North Austin's Research Boulevard Corridor

Located at Arbor Town Square on Research Boulevard, this opportunity offers a highly accessible North Austin address near major roadways, dining, and everyday amenities. Suite B-200 features a spacious 4,000-square-foot layout with furniture included for a move-in ready opportunity. A strong 4.6/1,000 SF parking ratio makes this a practical and well-positioned sublease for immediate occupancy.



AT A GLANCE

SIZE	4,000 SF
RATE	Call broker for pricing
PARKING	4.6:1000
FURNITURE	Included
AVAILABLE	Immediately
EXPIRES	05.30.2028



OFFICE FOR SUBLEASE



ARBOR TOWN SQUARE

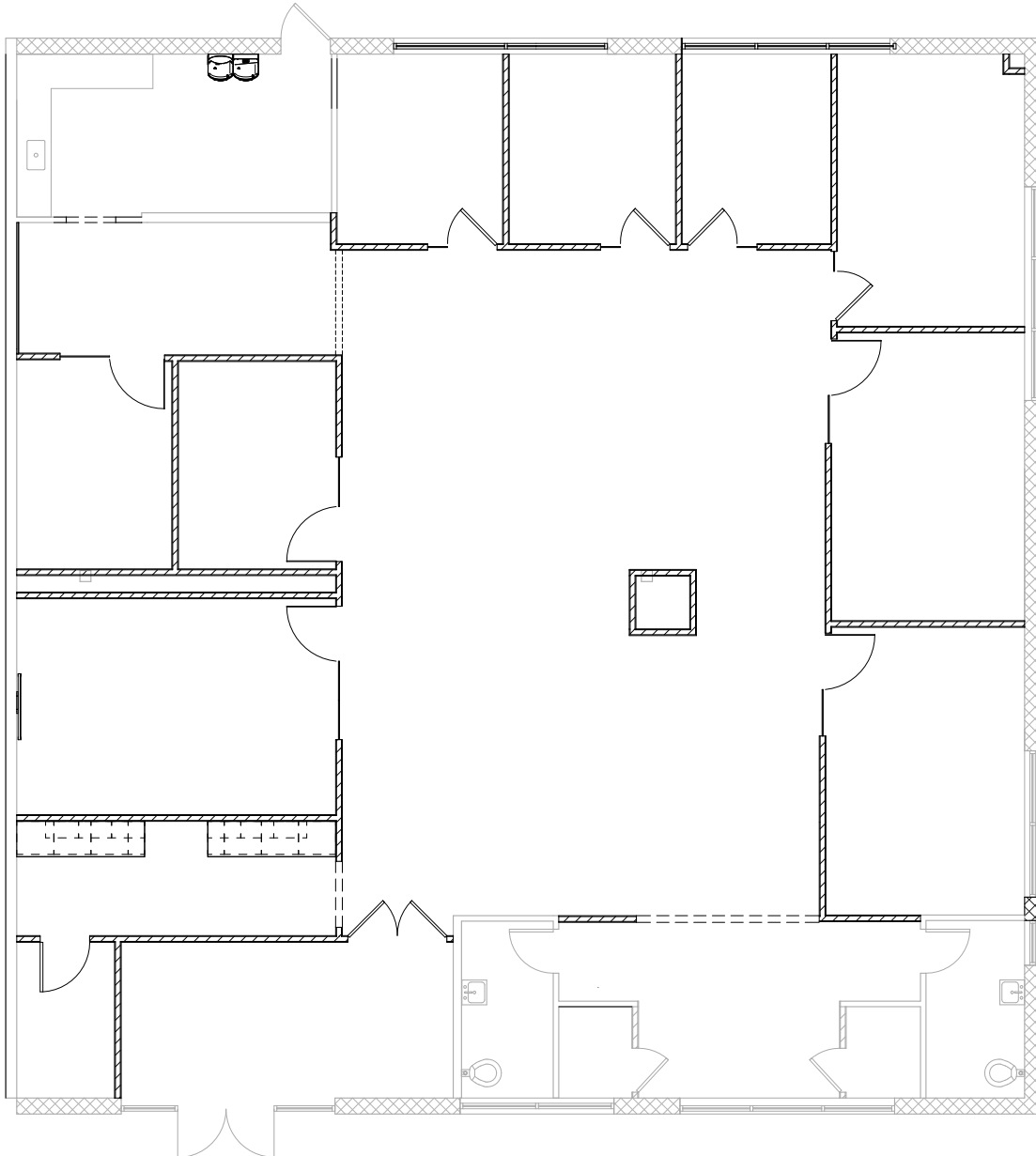


OFFICE FOR SUBLEASE



ARBOR TOWN SQUARE

4,000 SF



ARBOR TOWN SQUARE SUBLEASE

CONTACT



For Leasing and More Information:

NOAH YETLEY

yetley@aquilacommercial.com

512.684.3733

CHRIS PERRY, SIOR

perry@aquilacommercial.com

512.684.3803

The information contained herein has been obtained from sources believed reliable. AQUILA Commercial, LLC makes no guaranties or warranties as to the accuracy thereof. The presentation of the property is submitted subject to the possibility of errors, omissions, change of price, rental or other conditions, prior sale, lease or financing, or withdrawal without notice. Included projections, opinions, assumptions or estimates, are for example only, and may not represent current or future performance of the property. Information is for guidance only and does not constitute all or any part of a contract.



WWW.AQUILACOMMERCIAL.COM | 512.684.3800