

1661 AVENUE ROAD

**RARE FREESTANDING RETAIL FOR LEASE
IN TORONTO'S BEDFORD PARK NEIGHBOURHOOD**

**AMPLE
SURFACE
PARKING**



CBRE

1661 AVENUE ROAD, TORONTO

PROPERTY DETAILS

Address: 1661 Avenue Road, Toronto

Size: Ground Floor: 10,543 sq. ft.
Lower Ground: 2,404 sq. ft.
Basement: 10,131 sq. ft.

Net Rent: Please contact us

Taxes: \$203,564 annually

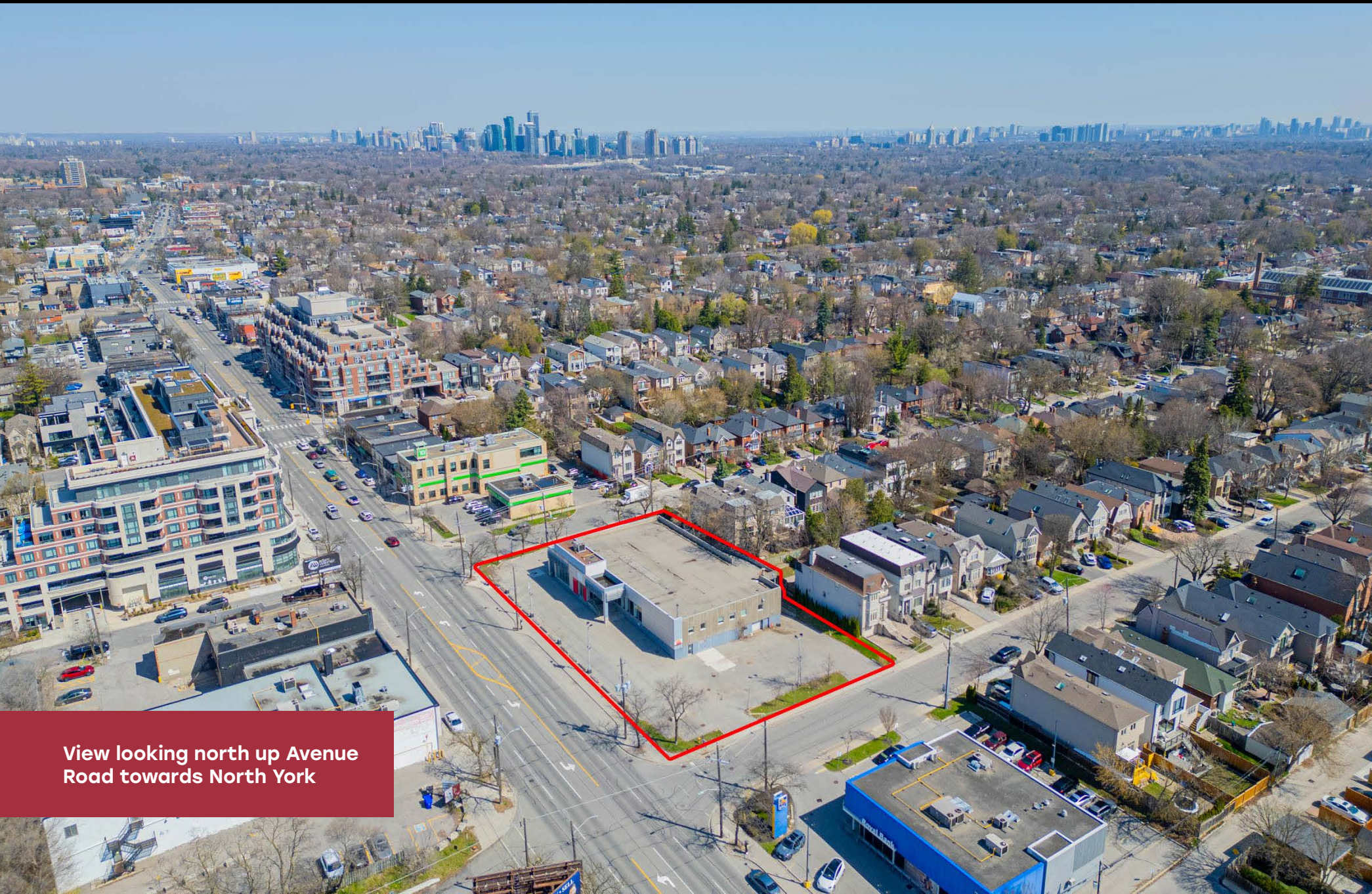
Available: Immediately

- Incredibly rare opportunity to secure a freestanding building in midtown Toronto
- Features an abundance of dedicated surface level parking spaces
- Neighbouring retailers include RBC, CIBC, A&W, North of Brooklyn Pizzeria, The Bagel House, BMO, and many more

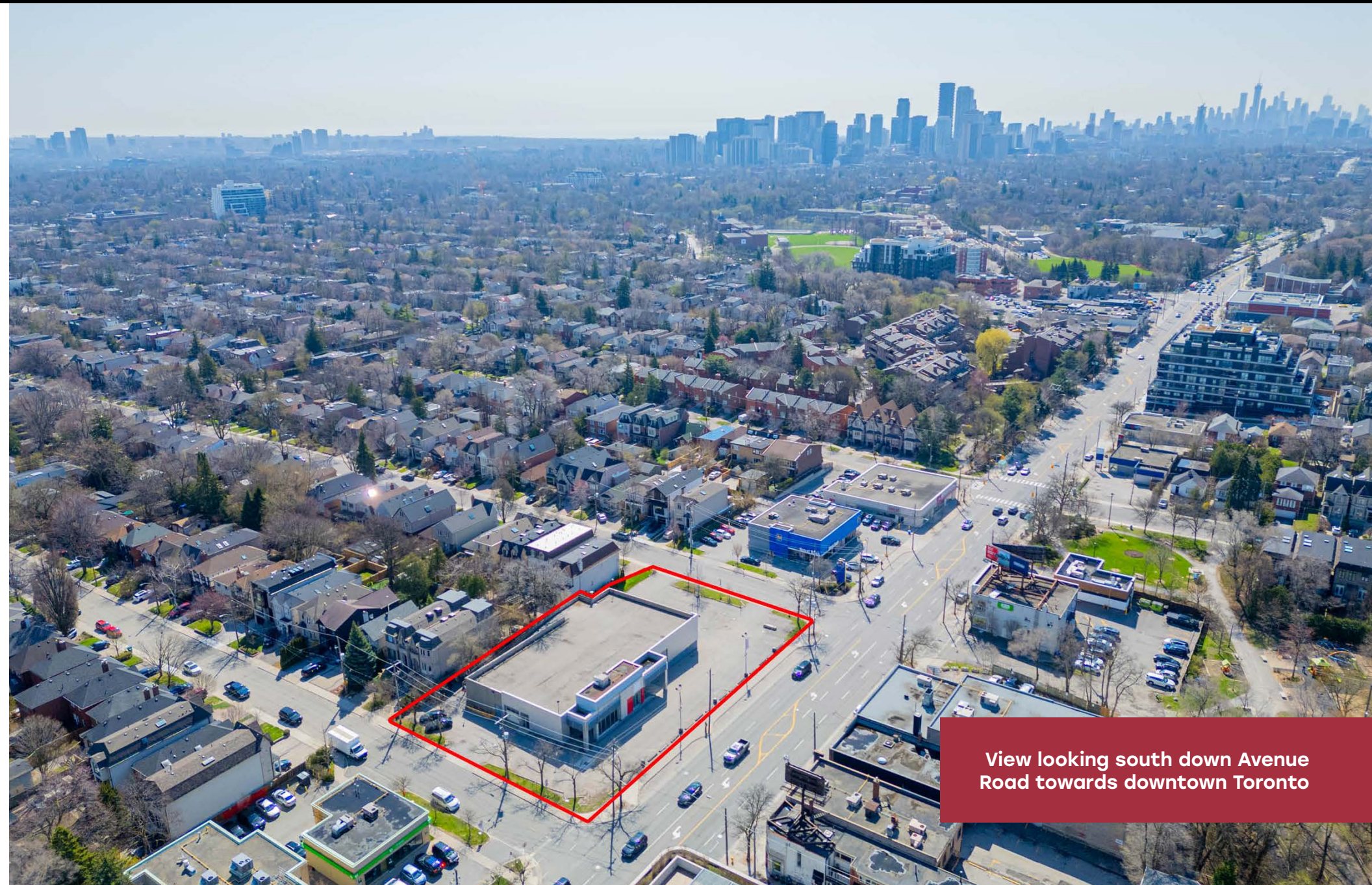


AMPLE
SURFACE
PARKING

AERIAL IMAGES



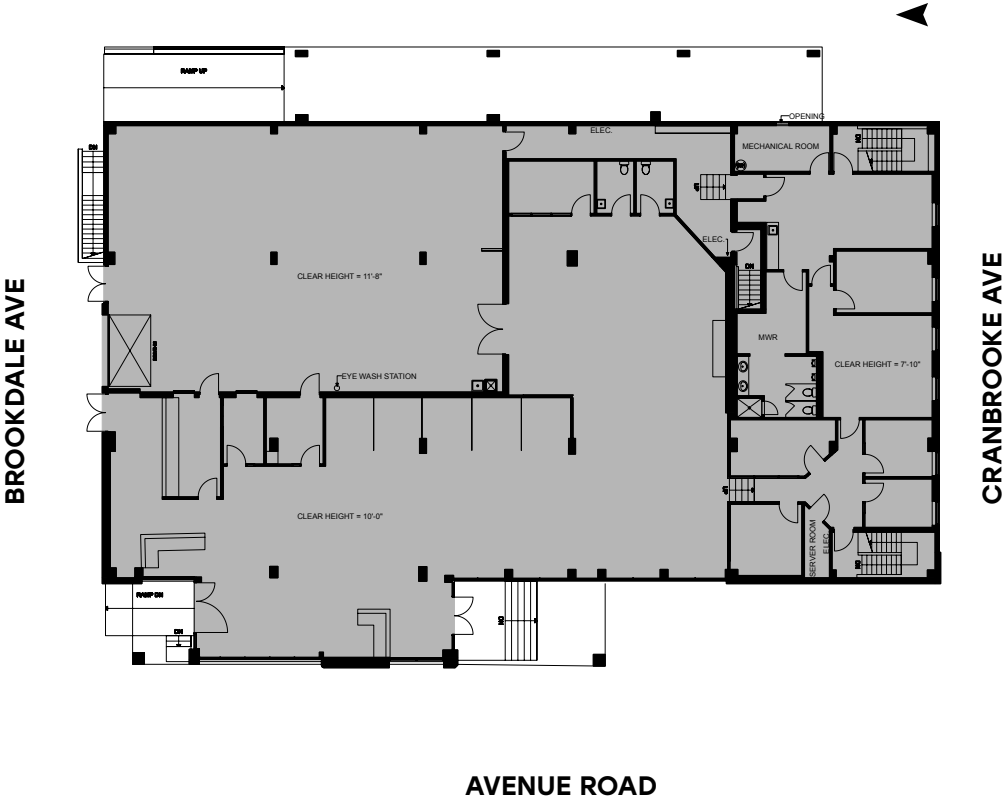
View looking north up Avenue Road towards North York



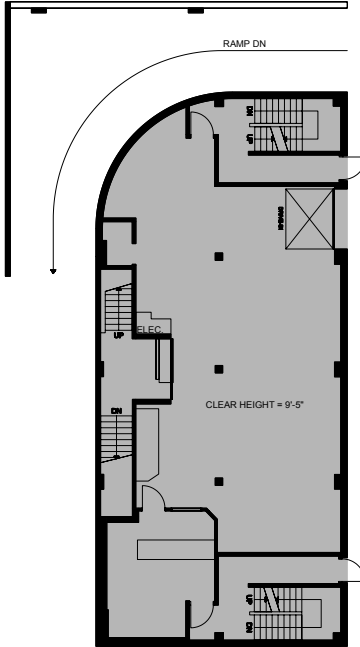
View looking south down Avenue Road towards downtown Toronto

FLOOR PLANS

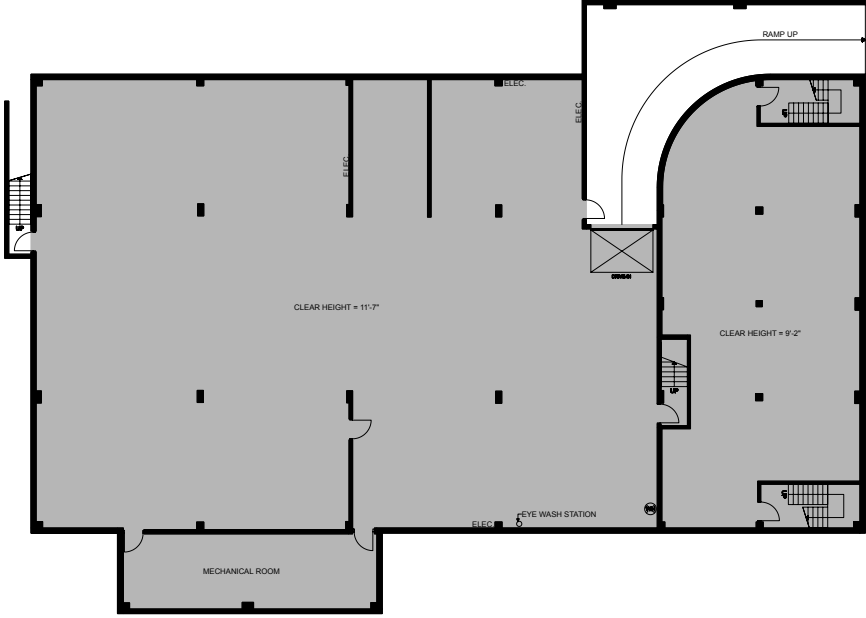
GROUND | 10,543 SF



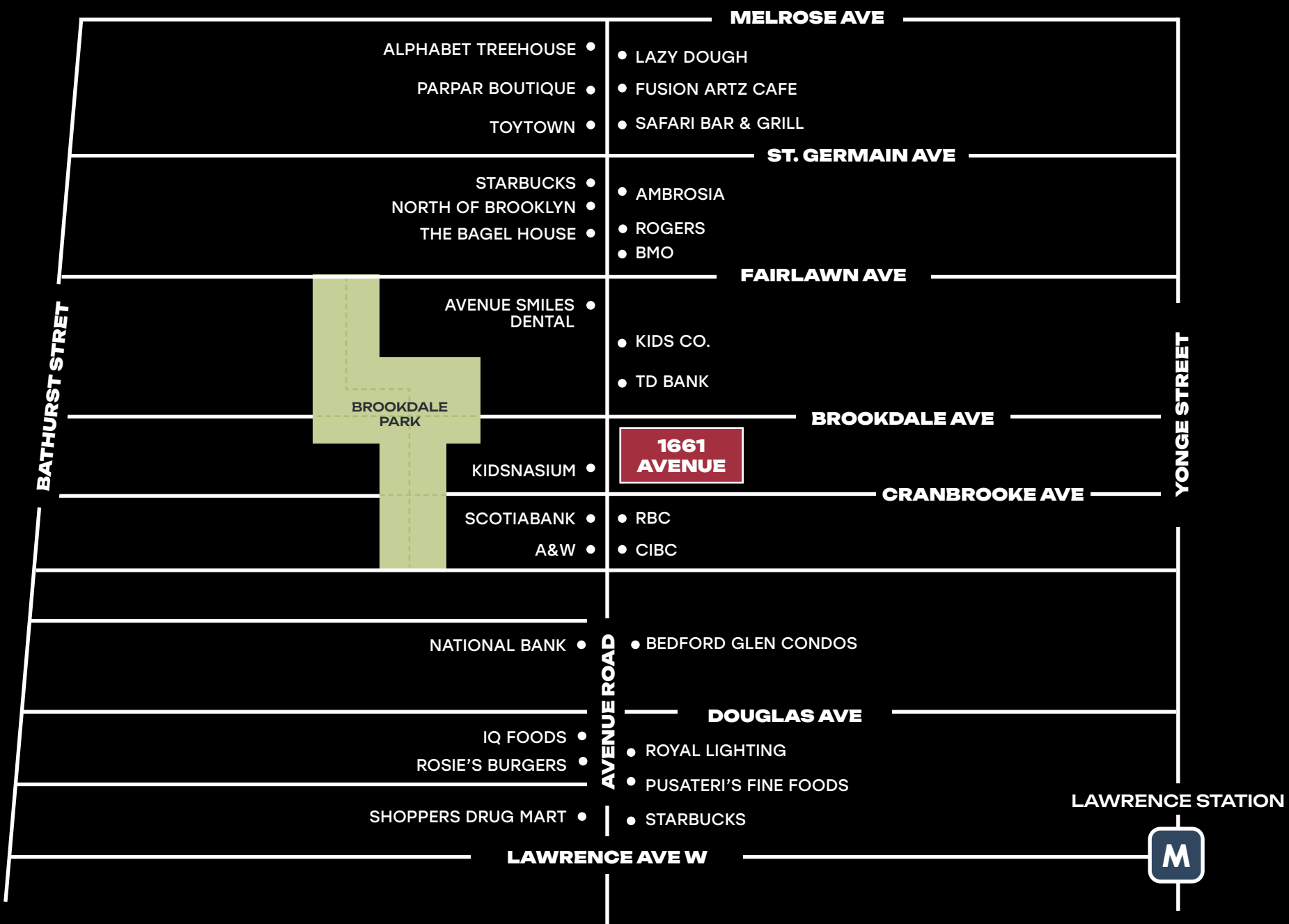
LOWER GROUND | 2,404 SF



BASEMENT | 10,131 SF



LOCATION MAP



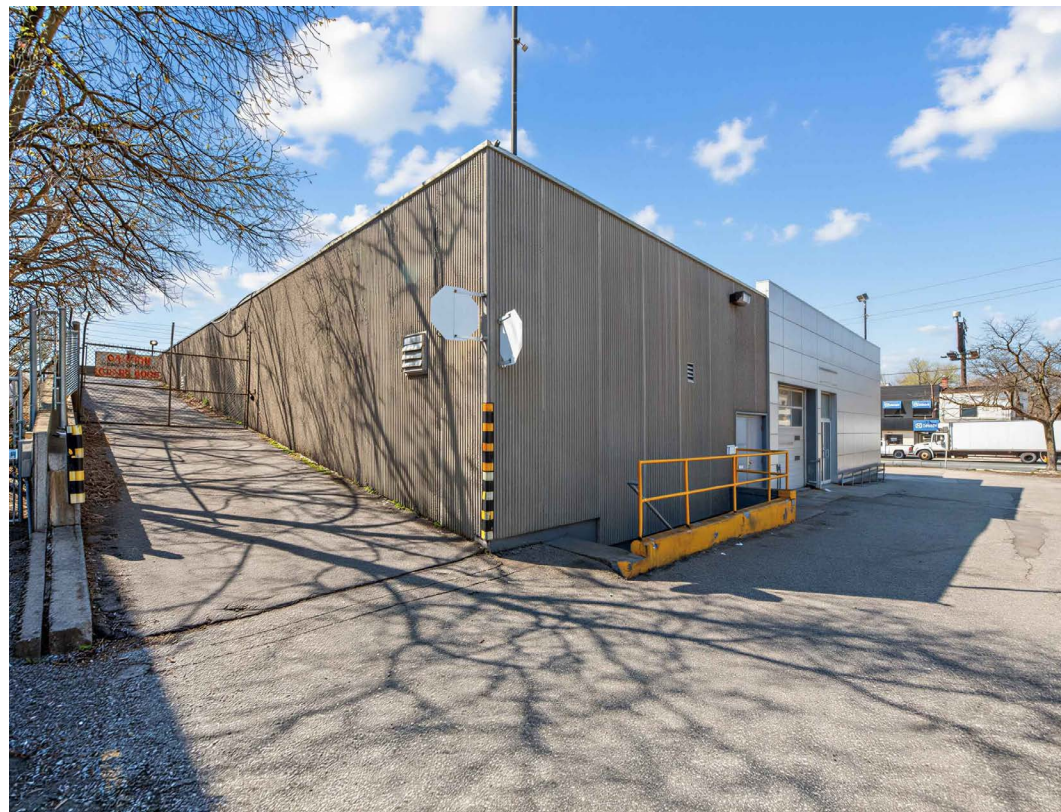
1661 AVENUE ROAD

1 KM RANGE (2025)
DEMOGRAPHIC SNAPSHOT

20,682
 POPULATION

\$359,015
 AVG. HOUSEHOLD INCOME

41
 MEDIAN AGE



CONTACT

ARLIN MARKOWITZ*
Executive Vice President
416 815 2374
arlin.markowitz@cbre.com

ALEX EDMISON*
Senior Vice President
416 874 7266
alex.edmison@cbre.com

JACKSON TURNER**
Senior Vice President
416 815 2394
jackson.turner@cbre.com

EMILY EVERETT*
Sales Associate
647 943 4185
emily.everett@cbre.com

*Sales Representative **Broker

CBRE

This disclaimer shall apply to CBRE Limited, Real Estate Brokerage, and to all other divisions of the Corporation, to include all employees and independent contractors ("CBRE"). The information set out herein, including, without limitation, any projections, images, opinions, assumptions and estimates obtained from third parties (the "Information") has not been verified by CBRE, and CBRE does not represent, warrant or guarantee the accuracy, correctness and completeness of the Information. CBRE does not accept or assume any responsibility or liability, direct or consequential, for the Information or the recipient's reliance upon the Information. The recipient of the Information should take such steps as the recipient may deem necessary to verify the Information prior to placing any reliance upon the Information. The Information may change and any property described in the Information may be withdrawn from the market at any time without notice or obligation to the recipient from CBRE. CBRE and the CBRE logo are the service marks of CBRE Limited and/or its affiliated or related companies in other countries. All other marks displayed on this document are the property of their respective owners. All Rights Reserved.