

FOR LEASE

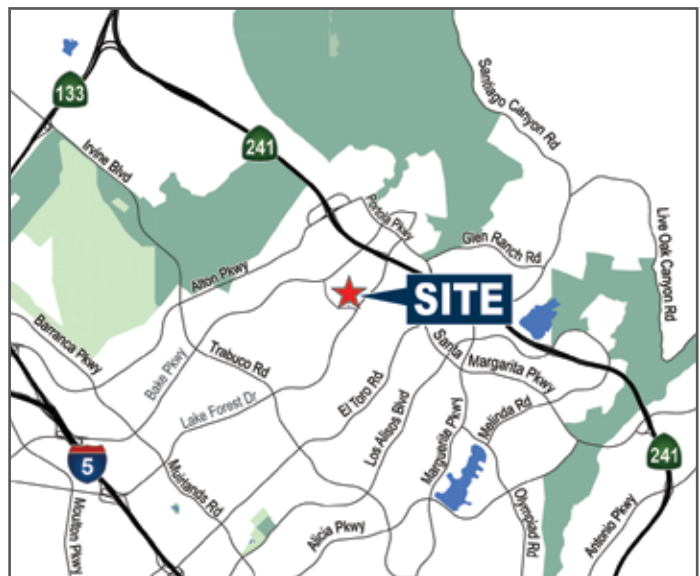
±5,350 SF Industrial Building

20551 Pascal Way, Lake Forest, CA



Property Features

- 5,350 SF Single Story Building
- 3 Ground Level Loading Doors
- 3:1,000 Parking Ratio
- 100% HVAC (Ideal for Lab / CNC Machine Shop)
- **Secured Fenced Yard Area**
- **1,000 Amps of Power**
- Fully Sprinklered
- Free Surface Parking
- **\$1.75 Industrial Gross**



Alton Burgess

Senior Vice President | Partner
(949) 263-5397 | aburgess@voitco.com
License # 01717094

Trent Walker

Executive Vice President | Partner
(949) 263-5342 | twalker@voitco.com
License # 00964476

Ryan Schroeder

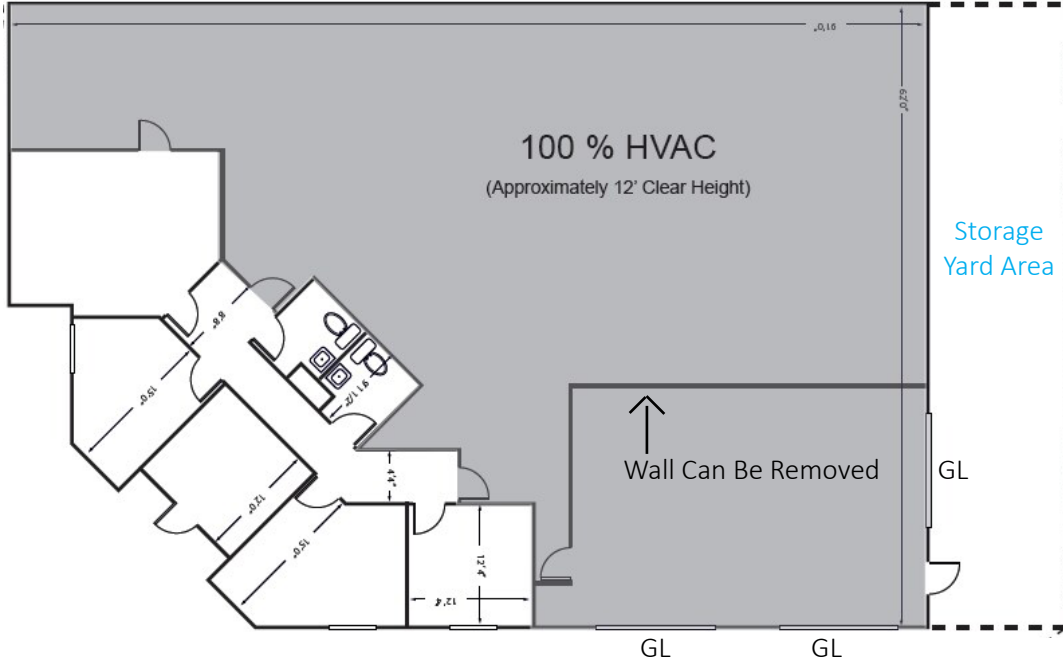
Associate
(949) 922-1854 | rschroeder@voitco.com
License # 02249575

2020 Main Street, Suite 100
Irvine, CA 92614
(949) 851-5100
www.voidco.com

FOR LEASE

±5,350 SF Industrial Building

20551 Pascal Way, Lake Forest, CA



Alton Burgess

Senior Vice President | Partner
(949) 263-5397 | aburgess@voitco.com
License # 01717094

Trent Walker

Executive Vice President | Partner
(949) 263-5342 | twalker@voitco.com
License # 00964476

Ryan Schroeder

Associate
(949) 922-1854 | rschroeder@voitco.com
License # 02249575

2020 Main Street, Suite 100
Irvine, CA 92614
(949) 851-5100
www.voidco.com