

# CENTRAL COMMERCE CENTER

1020 Central Ave S, Kent, WA

Available Immediately

Warehouse/Yard Space



## Property Specifications

- 8,245 SF total
- 1,041 SF office area
- 2 Grade level doors
- 20' Clear height
- +/- 9,110 SF of fenced yard area
- Available Immediately

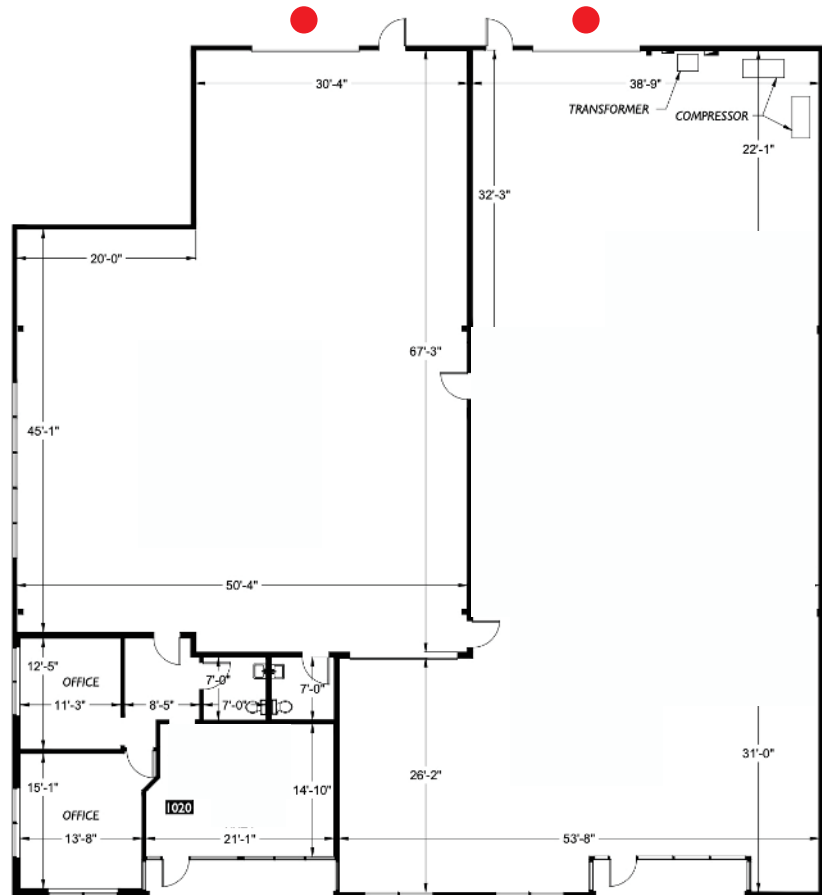
## Property Features

- Ample parking
- Professional image business park
- Excellent access to Hwy-167 and Downtown Kent
- Responsive local ownership



# CENTRAL COMMERCE CENTER

1020 Central Ave S, Kent, WA



Grade Level Door: ●

## Contact Andover for more info:

**Brian Bruininks, CCIM**  
 206-856-6249  
 bbruininks@andoverco.com

**Shane Mahvi, SIOR**  
 858-442-0441  
 smahvi@andoverco.com

**Lisa Rowe**  
 206-777-5122  
 lisar@dpillc.com

The information provided in this document should be independently verified on any material matter represented herein.

Owned & Operated by:



dpillc.com

# CENTRAL COMMERCE CENTER

1020 Central Ave S, Kent, WA



## Contact Andover for more info:

Brian Bruininks, CCIM  
206-856-6249  
bbruininks@andoverco.com

Shane Mahvi, SIOR  
858-442-0441  
smahvi@andoverco.com

Lisa Rowe  
206-777-5122  
lisar@dpillc.com

The information provided in this document should be independently verified on any material matter represented herein.

Owned & Operated by:



dpillc.com

# CENTRAL COMMERCE CENTER

1020 Central Ave S, Kent, WA



## Contact Andover for more info:

Brian Bruininks, CCIM  
206-856-6249  
bbuininks@andoverco.com

Shane Mahvi, SIOR  
858-442-0441  
smahvi@andoverco.com

Lisa Rowe  
206-777-5122  
lisar@dpillc.com

The information provided in this document should be independently verified on any material matter represented herein.

Owned & Operated by:



dpillc.com