

OFFICE SPACE FOR LEASE

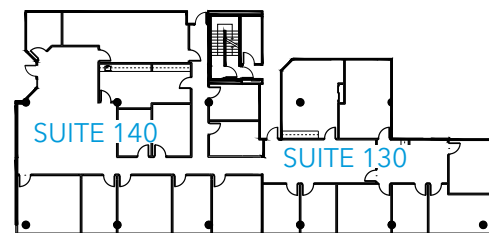
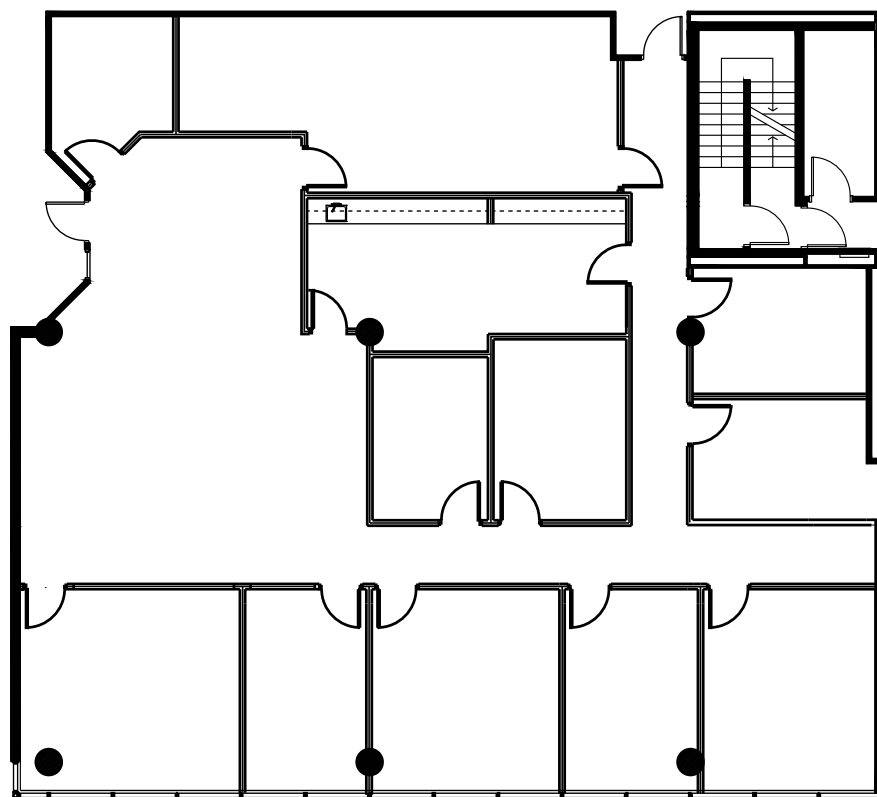
455 SHERMAN STREET

DENVER, COLORADO 80203

SUITE 140
±4,382 RSF

CONTIGUOUS WITH SUITE 130

AVAILABLE WITH
60 DAYS NOTICE



SUITE	SIZE	LAYOUT	AVAILABILITY
140	±4,382 RSF	10 offices (5 exterior) 1 conference room, reception/lobby area, kitchen/break room, access to restrooms, elevator and stairs	Available With 60 Days Notice

JR BITZER

303 501 8778
jrbitzer@lee-associates.com