

BOARDWALK PLAZA

PALM DESERT OFFICE SUITES FOR LEASE

41865 BOARDWALK | PALM DESERT, CALIFORNIA 92211

PREMIER
PRESIDENTIAL
SUITE

597 SF

Professionally maintained office suites with natural light, signage visibility, and convenient access to I-10 and Highway 111.



PREMIER PRESIDENTIAL EXECUTIVE SUITE

±597 SF OF ELEVATED, PRIVATE OFFICE SPACE

Soaring ceilings and exceptional volume create a sense of openness rarely found in a suite of this size.

This thoughtfully designed space offers a refined and professional setting with its own private exterior entrance, abundant natural light, and a comfortable layout ideal for focused work or client meetings.



PRIVATE
ENTRY



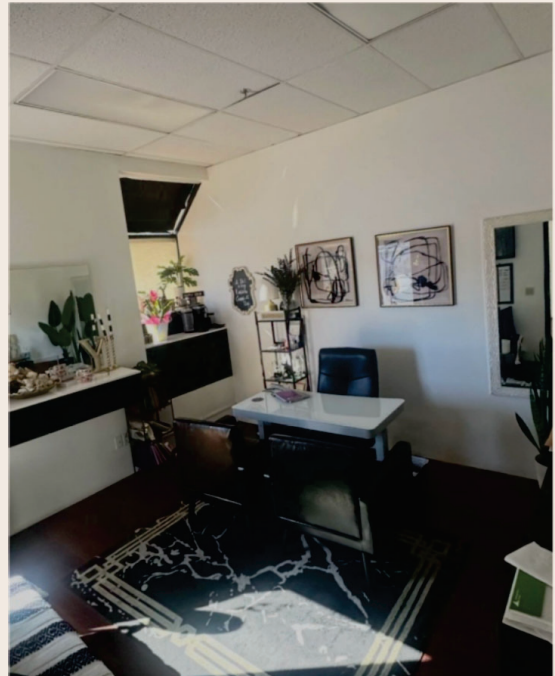
HIGH
CEILINGS



KITCHEN
AREA



PRIVATE
RESTROOM



LEASE RATE

\$1.35 PSF

+ \$0.49 TRIPLE NET

*A Prestigious Address
for Your Business*

FOR LEASING
INFORMATION

Steve Lyle
(760) 578-9927
stevelyle@cbclyle.net
CalDRE #00762911

Arley Ryan
(630) 660-9376
arleyryan@cbclyle.net
CalDRE #02198855



COLDWELL BANKER
COMMERCIAL
LYLE & ASSOCIATES, LP
DRE #01462012