

OLYMPIC MILLS

107 SE WASHINGTON ST. PORTLAND, OR 97214



CREATIVE SPACE FOR LEASE

214 - 8,982 SF
OFFICE
407 - 1,680 SF
RETAIL

OFFICE, MAKER, & STUDIO SPACES

GROUND-FLOOR RETAIL
OPPORTUNITIES

HISTORIC CREATIVE BUILDING
CENTRAL EASTSIDE PDX

MOVE-IN READY
SPACES AVAILABLE



11.10.2025

NICHOLAS G. DIAMOND
Principal Broker | 503-222-2655
ndiamond@capacitycommercial.com

MICHELLE D. ROZAKIS
Principal Broker | 503-222-1195
mrozakis@capacitycommercial.com

RILEY M. HENDERSON
Senior Associate Broker | 503-975-9301
riley@capacitycommercial.com

Brokers Have an Ownership Interest in the Property Herein Represented
©2025 Capacity Commercial Group LLC • 805 SW Broadway #600, Portland OR • 503.326.9000 • capacitycommercial.com

VIEW ONLINE

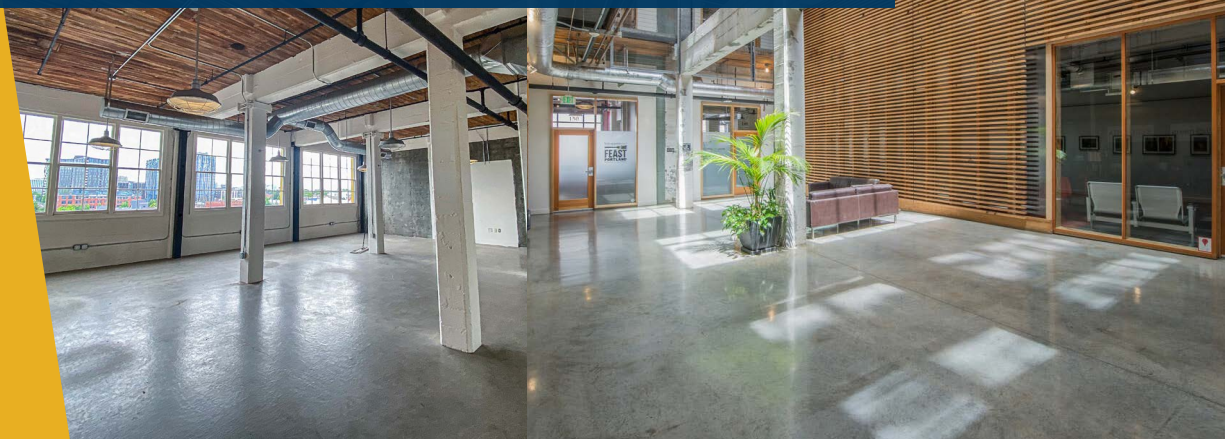




A historic property

REIMAGINED

Fully updated to modern mechanical, structural, and technological standards, **Olympic Mills** features original beams, finishes, and re-milled hardwoods. A full range of amenities, including on-site parking, a fitness center, building-wide WiFi, conference rooms, communal meeting areas, and a rooftop patio, round out its best-in-class features.



OLYMPIC MILLS

AMENITIES



ON-SITE PARKING
in Underground Garage



NEAR STREETCAR
Two Blocks to the A Loop



BICYCLE STORAGE
in Secure Facility



GYM & SHOWERS
with Full Locker Rooms



COMMON AREAS
Fully Furnished



CONFERENCE ROOMS
Shared Between Tenants



ROOFTOP PATIO
with Downtown Views



COMMON AREA WiFi
Free for Building Tenants



ON-SITE RESTAURANT
(Olympia Provisions)



SHARED KITCHEN
Fully Equipped



ON-SITE MGMT.
Low-Stress Tenancy



INCUBATOR SPACE
Ready for Growth

Creative Office / Tech / Studio Space

ADAPTABILITY

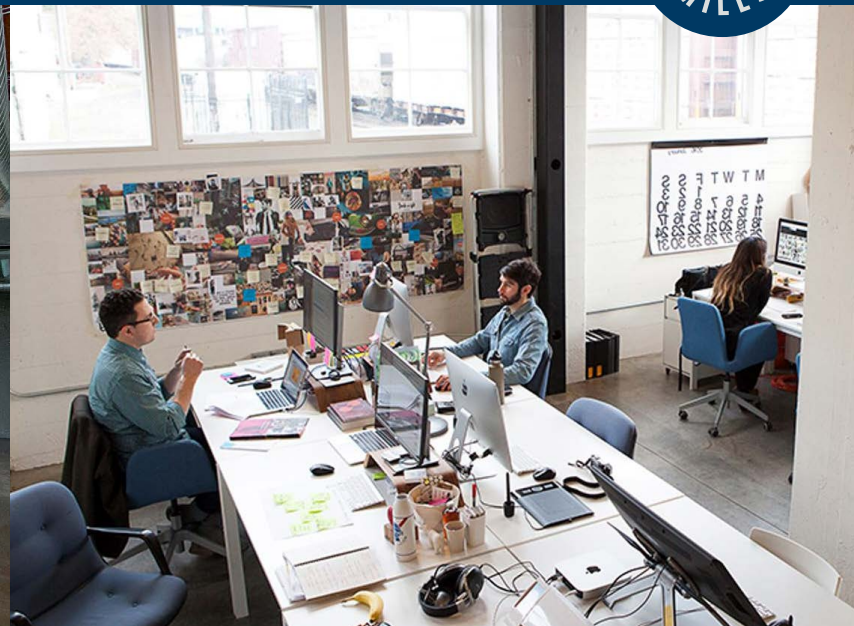
Discover dynamic private suites tailored to suit businesses of all sizes. Offerings spanning seven floors and featuring both interior and exterior-facing office and studio spaces are move-in-ready. At **Olympic Mills**, you'll easily find the ideal layout to foster your evolving business needs.

- Construction 1920; Renovation 2008
- Polished Concrete Floors
- Exposed 14'-16' Ceilings
- Abundant Natural Light
- Cityscape Views
- Secure Bike Parking
- Affordable On-site Storage
- Revamped HVAC Systems
- Customizable Suite Layouts
- Easy Access to Major Freeways & Portland Streetcar



FEATURED OFFICE INTERIORS

OLYMPIC MILLS



FEATURED TENANTS





1-2 BLOCKS AWAY

WAYFINDER BEER

PRODUCE ROW CAFE

A vibrant and bustling **NEIGHBORHOOD**

The **Central Eastside Industrial District (CEID)** is an emerging hotspot for innovation and is one of the most unique districts in the country, housing office, flex, and industrial jobs while enjoying close proximity to the city core, the natural beauty of the Eastbank Esplanade, and everything Portland has to offer.

Well-preserved historic buildings are nestled between modern multi-story developments, and area residents and workers enjoy easy access to public transit and freeways.

The **CEID** extends north to I-84, south to Powell Blvd., and from east to west between the Willamette Riverfront and SE 12th Ave. It is one of 3 enhanced service districts in Portland, where property owners fund enhanced services such as trash cleanup, graffiti removal and business development.



ON-SITE **ADJACENT**

OLYMPIA PROVISIONS (AT OLYMPIC MILLS)

SMITH TEAMAKER



Neighborhood

HIGHLIGHTS



EASTBANK ESPLANADE



INTERSTATE 5

MORRISON BRIDGE



WAYFINDER BEER

SE PINE ST

OFFICE DEPOT

MILLER PAINT

PRODUCE ROW CAFE

SE OAK ST

LA VICTORIA

SHERIDAN FRUIT CO.

PICA PICA GRILL

OLYMPIC MILLS

SE 2ND AVE

SE 3RD AVE

SE STARK ST

HOTEL GRAND STARK

WESTWARD WHISKEY

W.C. WINKS HARDWARE

MY FATHER'S PLACE

OLYMPIA PROVISIONS

SE WASHINGTON ST

RINELLA PRODUCE

SLOW BAR

SMITH TEAMAKER

THE FRIED ONION

SHELL

NW SELF STORAGE

SE ALDER ST

PDX NIGHT MARKET

SWAN DIVE BAR

SE MORRISON ST

ROSE CITY SELF STOR.

CITY LIQUIDATORS

SE BELMONT ST

SE BELMONT ST

LABYRINTH FORGE BREWING

GRAPE APE BAR



OLYMPIC MILLS

107 SE WASHINGTON ST.

OPPORTUNITIES FOR LEASE

11/10/2025

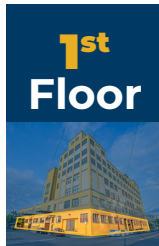


OLYMPIC MILLS

107 SE WASHINGTON ST.

OPPORTUNITIES FOR LEASE

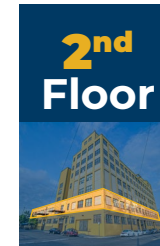
11/10/2025



1st Floor

OLYMPIC MILLS SQUARE FOOTAGE		
Suite Number	Sq. Ft.	Max. Combined
133 (Retail)	857	
136	1,074	
137	970	
141	484	

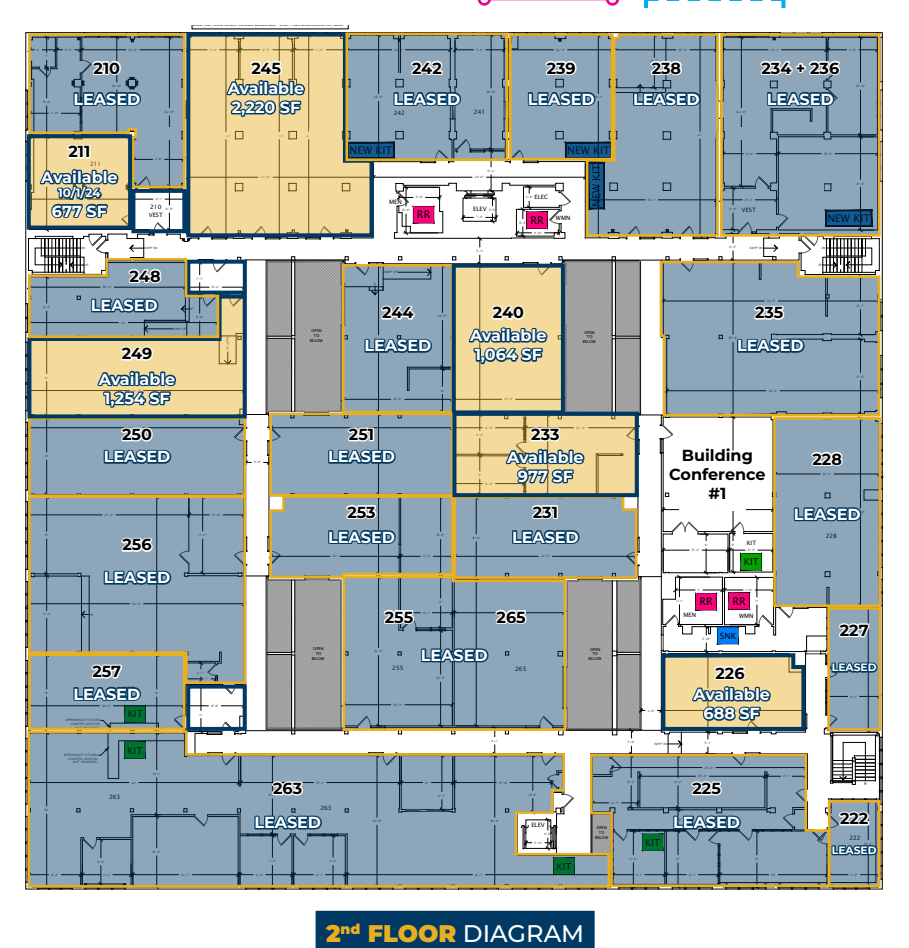
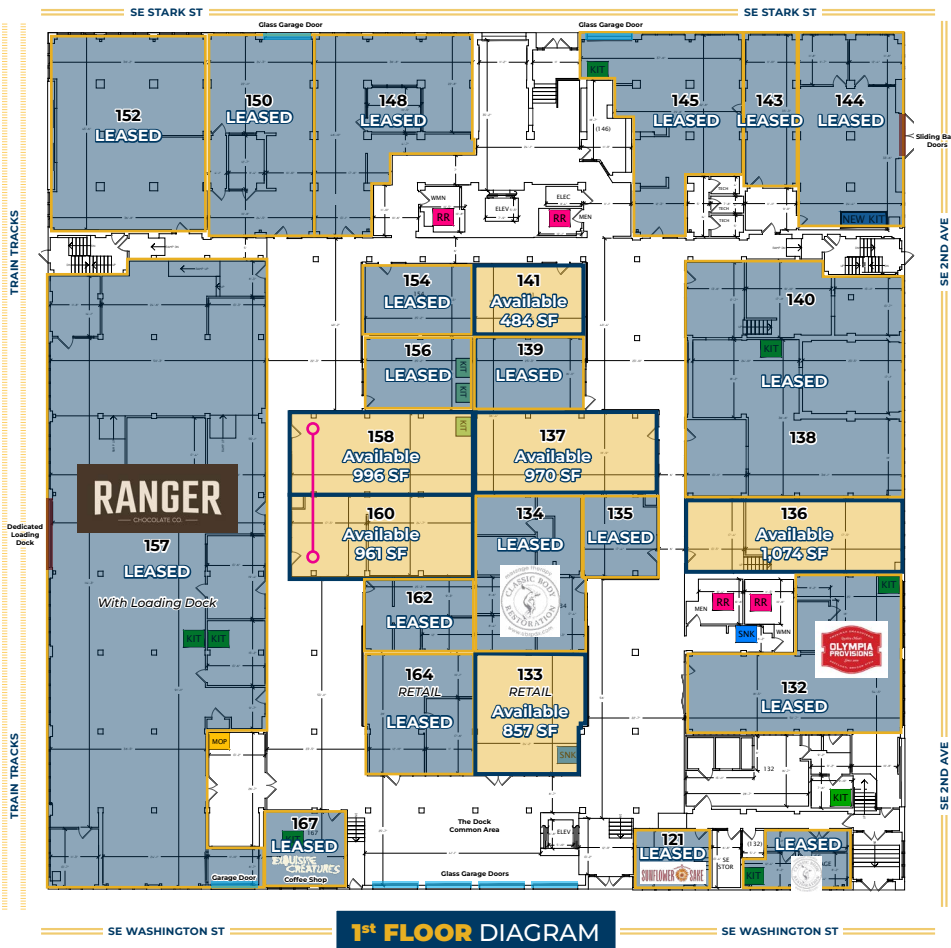
OLYMPIC MILLS SQUARE FOOTAGE		
Suite Number	Sq. Ft.	Max. Combined
158	996	
160	961	



2nd Floor

OLYMPIC MILLS SQUARE FOOTAGE		
Suite Number	Sq. Ft.	Max. Combined
211	677	
245	2,220	
226	688	
233	977	

OLYMPIC MILLS SQUARE FOOTAGE		
Suite Number	Sq. Ft.	Max. Combined
240	1,064	
249	1,254	



NICHOLAS G. DIAMOND
Principal Broker | 503-222-2655
ndiamond@capacitycommercial.com

MICHELLE D. ROZAKIS
Principal Broker | 503-222-1195
mrozakis@capacitycommercial.com

RILEY M. HENDERSON
Senior Associate Broker | 503-975-9301
riley@capacitycommercial.com

Brokers Have an Ownership Interest in the Property Herein Represented
©2025 Capacity Commercial Group LLC | 805 SW Broadway #600, Portland OR | 503.326.9000 | capacitycommercial.com



NICHOLAS G. DIAMOND
Principal Broker | 503-222-2655
ndiamond@capacitycommercial.com

MICHELLE D. ROZAKIS
Principal Broker | 503-222-1195
mrozakis@capacitycommercial.com

RILEY M. HENDERSON
Senior Associate Broker | 503-975-9301
riley@capacitycommercial.com

Brokers Have an Ownership Interest in the Property Herein Represented
©2025 Capacity Commercial Group LLC | 805 SW Broadway #600, Portland OR | 503.326.9000 | capacitycommercial.com





OLYMPIC MILLS

107 SE WASHINGTON ST.

OPPORTUNITIES FOR LEASE

11/10/2025



OLYMPIC MILLS

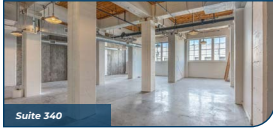
107 SE WASHINGTON ST.

OPPORTUNITIES FOR LEASE

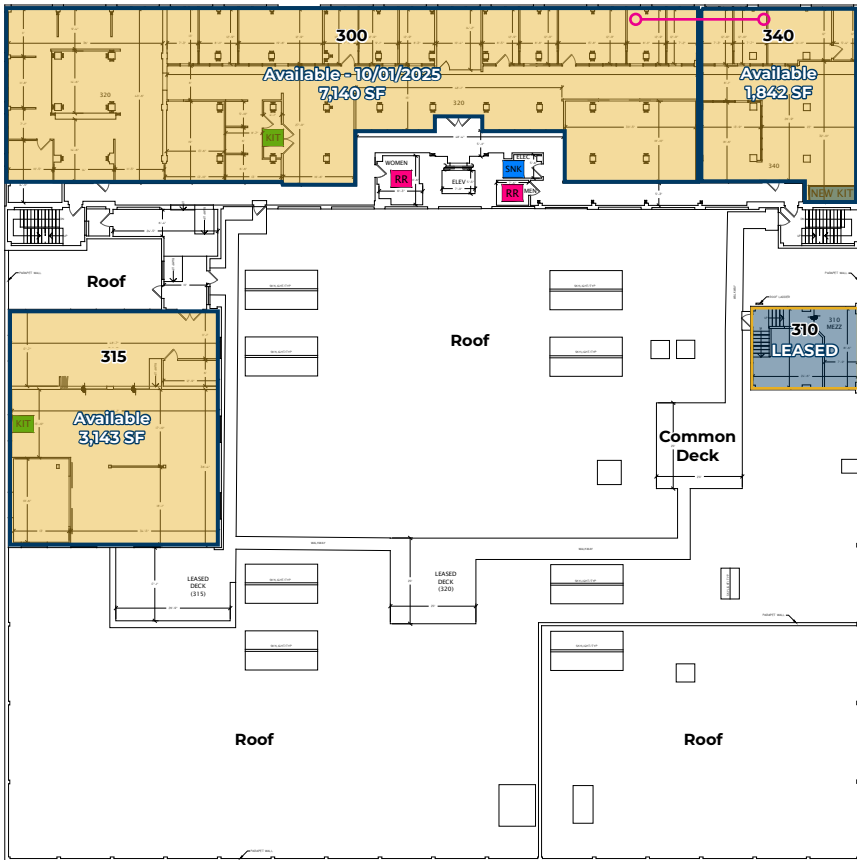
11/10/2025

3rd Floor

OLYMPIC MILLS SQUARE FOOTAGE		
Suite Number	Sq. Ft.	Max. Combined
315	3,143	8,982
300	7,140	
340	1,842	



3rd FLOOR DIAGRAM



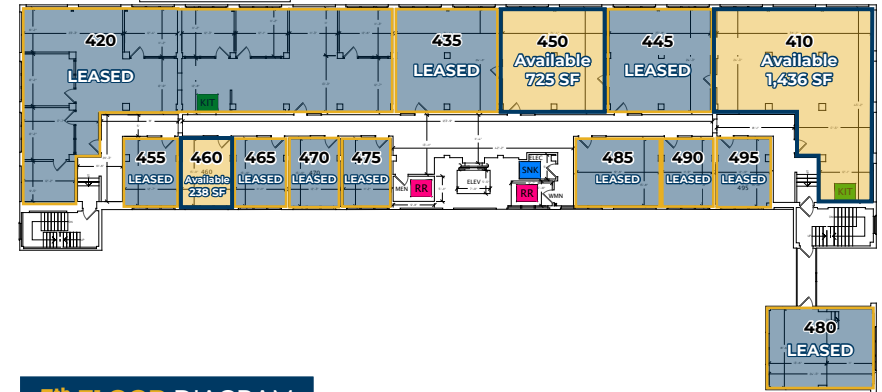
4th / 5th Floor

OLYMPIC MILLS SQUARE FOOTAGE		
Suite Number	Sq. Ft.	Max. Combined
410	1,436	1,716
450	725	
460	238	
510	535	
545	1,716	
540	1,716	

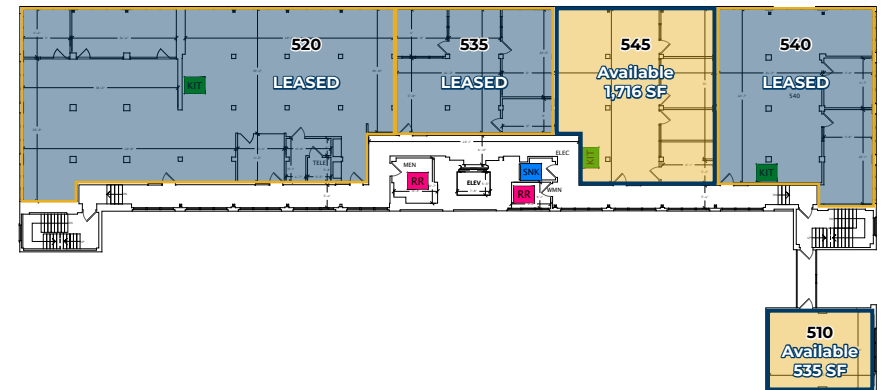


COMBINABLE DIVISIBLE

4th FLOOR DIAGRAM



5th FLOOR DIAGRAM



NICHOLAS G. DIAMOND
Principal Broker | 503-222-2655
ndiamond@capacitycommercial.com

MICHELLE D. ROZAKIS
Principal Broker | 503-222-1195
mrozakis@capacitycommercial.com

RILEY M. HENDERSON
Senior Associate Broker | 503-975-9301
riley@capacitycommercial.com

Brokers Have an Ownership Interest in the Property Herein Represented

©2025 Capacity Commercial Group LLC · 805 SW Broadway #600, Portland OR · 503.326.9000 · capacitycommercial.com



NICHOLAS G. DIAMOND
Principal Broker | 503-222-2655
ndiamond@capacitycommercial.com

MICHELLE D. ROZAKIS
Principal Broker | 503-222-1195
mrozakis@capacitycommercial.com

RILEY M. HENDERSON
Senior Associate Broker | 503-975-9301
riley@capacitycommercial.com

Brokers Have an Ownership Interest in the Property Herein Represented

©2025 Capacity Commercial Group LLC · 805 SW Broadway #600, Portland OR · 503.326.9000 · capacitycommercial.com





OLYMPIC MILLS

107 SE WASHINGTON ST.

OPPORTUNITIES FOR LEASE

11/10/2025



OLYMPIC MILLS

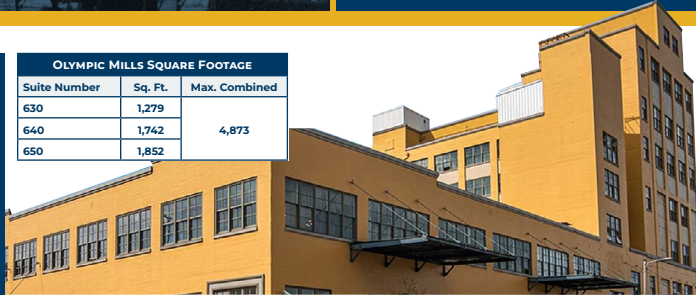
107 SE WASHINGTON ST.

OPPORTUNITIES FOR LEASE

11/10/2025

6th Floor

OLYMPIC MILLS SQUARE FOOTAGE		
Suite Number	Sq. Ft.	Max. Combined
630	1,279	4,873
640	1,742	
650	1,852	



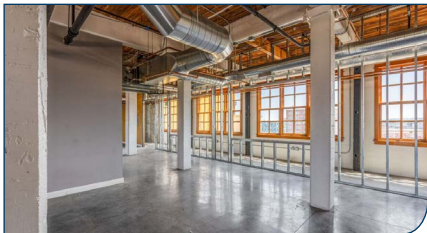
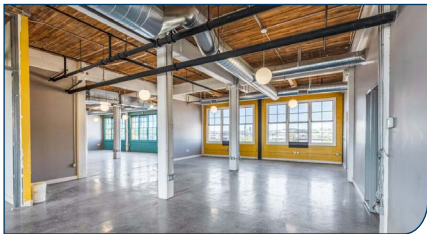
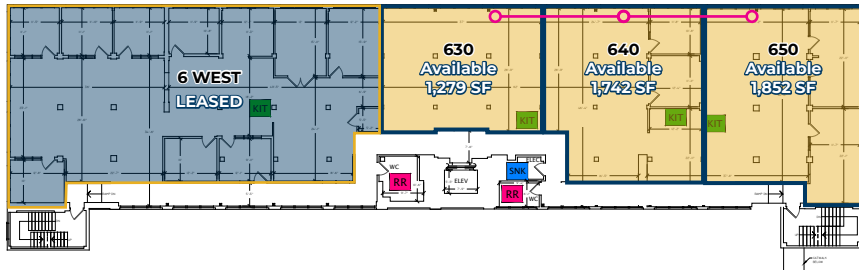
7th / 8th Floor

OLYMPIC MILLS SQUARE FOOTAGE		
Suite Number	Sq. Ft.	Max. Combined
7th Floor*	7,598	8,470
8th Floor*	871	
7th Floor Decks / Terraces	2,625	
8th Floor Decks / Terraces	822	

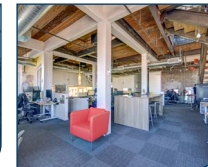
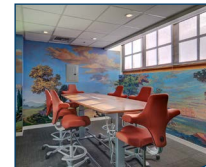
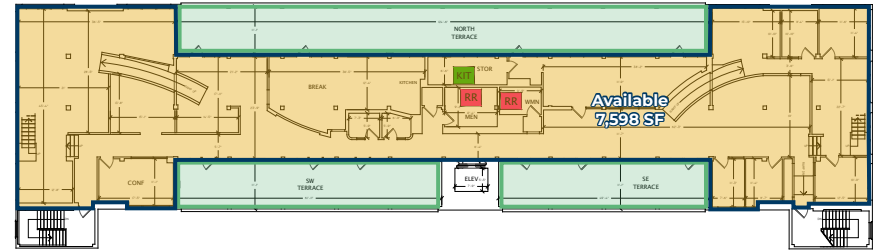
*Available for Sublease - Please Contact Brokers for More Information

Penthouse Suite Opportunity

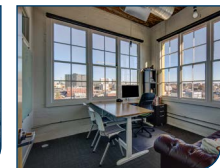
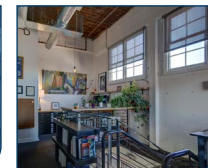
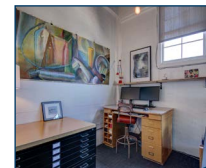
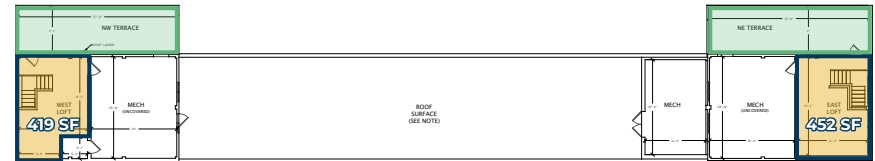
6th FLOOR DIAGRAM



7th FLOOR DIAGRAM



8th FLOOR DIAGRAM



NICHOLAS G. DIAMOND
Principal Broker | 503-222-2655
ndiamond@capacitycommercial.com

MICHELLE D. ROZAKIS
Principal Broker | 503-222-1195
mrozakis@capacitycommercial.com

RILEY M. HENDERSON
Senior Associate Broker | 503-975-9301
riley@capacitycommercial.com

Brokers Have an Ownership Interest in the Property Herein Represented

©2025 Capacity Commercial Group LLC | 805 SW Broadway #600, Portland OR | 503.326.9000 | capacitycommercial.com



NICHOLAS G. DIAMOND
Principal Broker | 503-222-2655
ndiamond@capacitycommercial.com

MICHELLE D. ROZAKIS
Principal Broker | 503-222-1195
mrozakis@capacitycommercial.com

RILEY M. HENDERSON
Senior Associate Broker | 503-975-9301
riley@capacitycommercial.com

Brokers Have an Ownership Interest in the Property Herein Represented

©2025 Capacity Commercial Group LLC | 805 SW Broadway #600, Portland OR | 503.326.9000 | capacitycommercial.com





OLYMPIC MILLS

107 SE WASHINGTON ST.

OPPORTUNITIES FOR LEASE

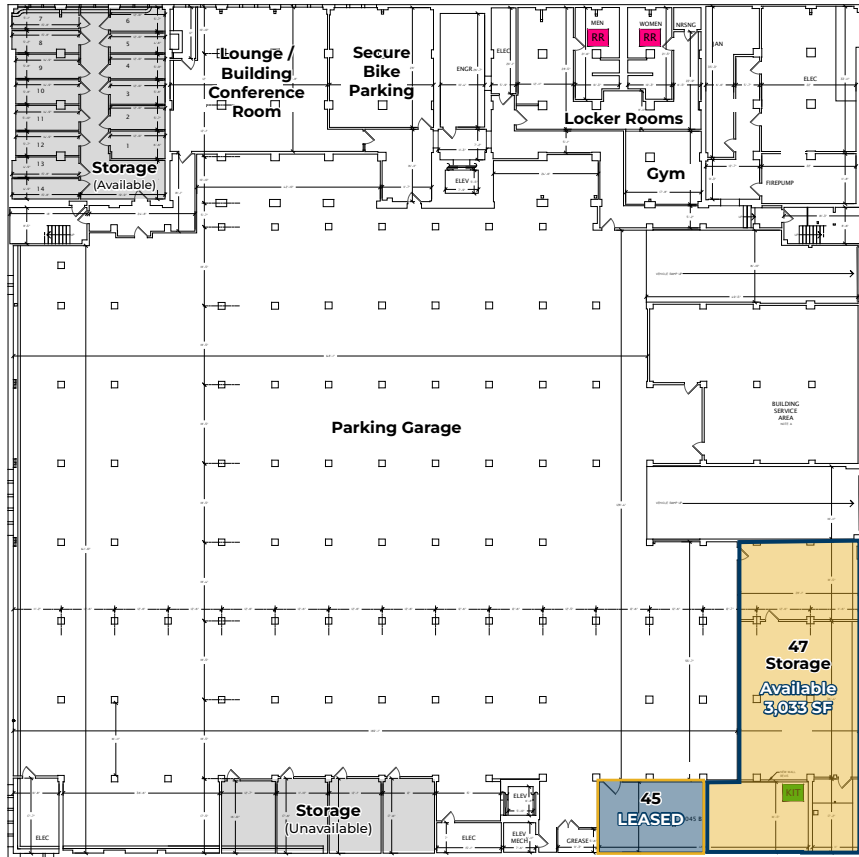
11/10/2025



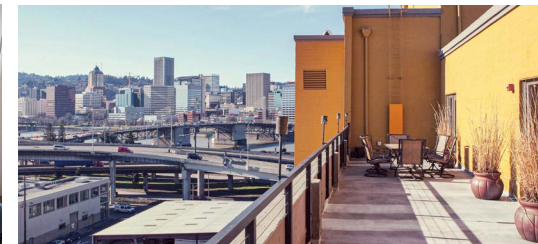
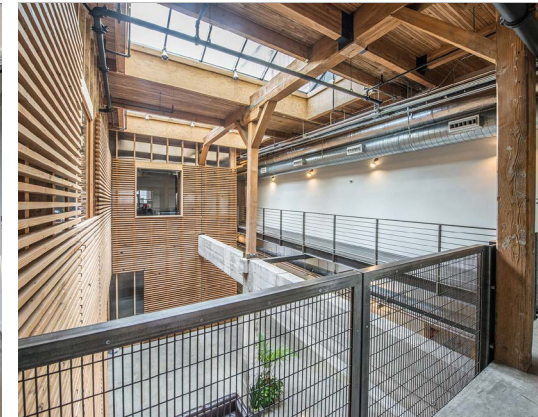
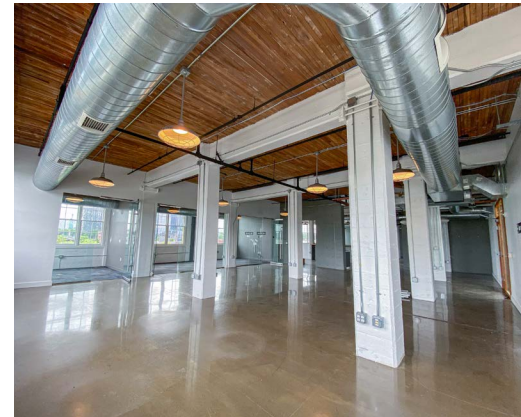
OLYMPIC MILLS

Basement & Garage Level

OLYMPIC MILLS SQUARE FOOTAGE		
Suite Number	Sq. Ft.	Max. Combined
47 (Storage)	3,033	



BASEMENT DIAGRAM



NICHOLAS G. DIAMOND
Principal Broker | 503-222-2655
ndiamond@capacitycommercial.com

MICHELLE D. ROZAKIS
Principal Broker | 503-222-1195
mrozakis@capacitycommercial.com

RILEY M. HENDERSON
Senior Associate Broker | 503-975-9301
riley@capacitycommercial.com

Brokers Have an Ownership Interest in the Property Herein Represented

©2025 Capacity Commercial Group LLC • 805 SW Broadway #600, Portland OR • 503.326.9000 • capacitycommercial.com



NICHOLAS G. DIAMOND
Principal Broker | 503-222-2655
ndiamond@capacitycommercial.com

MICHELLE D. ROZAKIS
Principal Broker | 503-222-1195
mrozakis@capacitycommercial.com

RILEY M. HENDERSON
Senior Associate Broker | 503-975-9301
riley@capacitycommercial.com

Brokers Have an Ownership Interest in the Property Herein Represented

©2025 Capacity Commercial Group LLC • 805 SW Broadway #600, Portland OR • 503.326.9000 • capacitycommercial.com

