

FOR LEASE

20 EAST AVENUE • LEWISTON - MAINE

AVAILABLE:

18,040 SF / 17,239 SF SUBDIVIDABLE / 17,239 SF 6,145 SF

PROPERTY DESCRIPTION

- **250,000 SF Shopping Center anchored by Hannaford**
- **Located at the Intersection of East Avenue and Lisbon Street with a traffic count of 24,000 cars/day**
- **Retailers include: CVS, Bull Moose Music, O'Rielly Auto Parts, Family Dollar, Art's Nails, Splittin' Wood, Fun City and Sea40**
- **Available Space: 3,000 SF - 18,040 SF**

PROPERTY AERIAL



WRE Commercial Brokers, is representing the Owner in the marketing, negotiation, and sale and/or lease of this property. While information furnished is from sources deemed reliable, no warranty or representation, express or implied, is made as to the accuracy of information contained herein, and same is submitted subject to errors, omissions, change of price, rental or other conditions, withdrawal without notice, and to any special listing conditions imposed by our principals.

CONTACT INFORMATION



795 Roosevelt Trail - Windham, ME 04062
 Jay Wise - C: 207.329.3499
jay@wrebrokers.com - www.wrebrokers.com

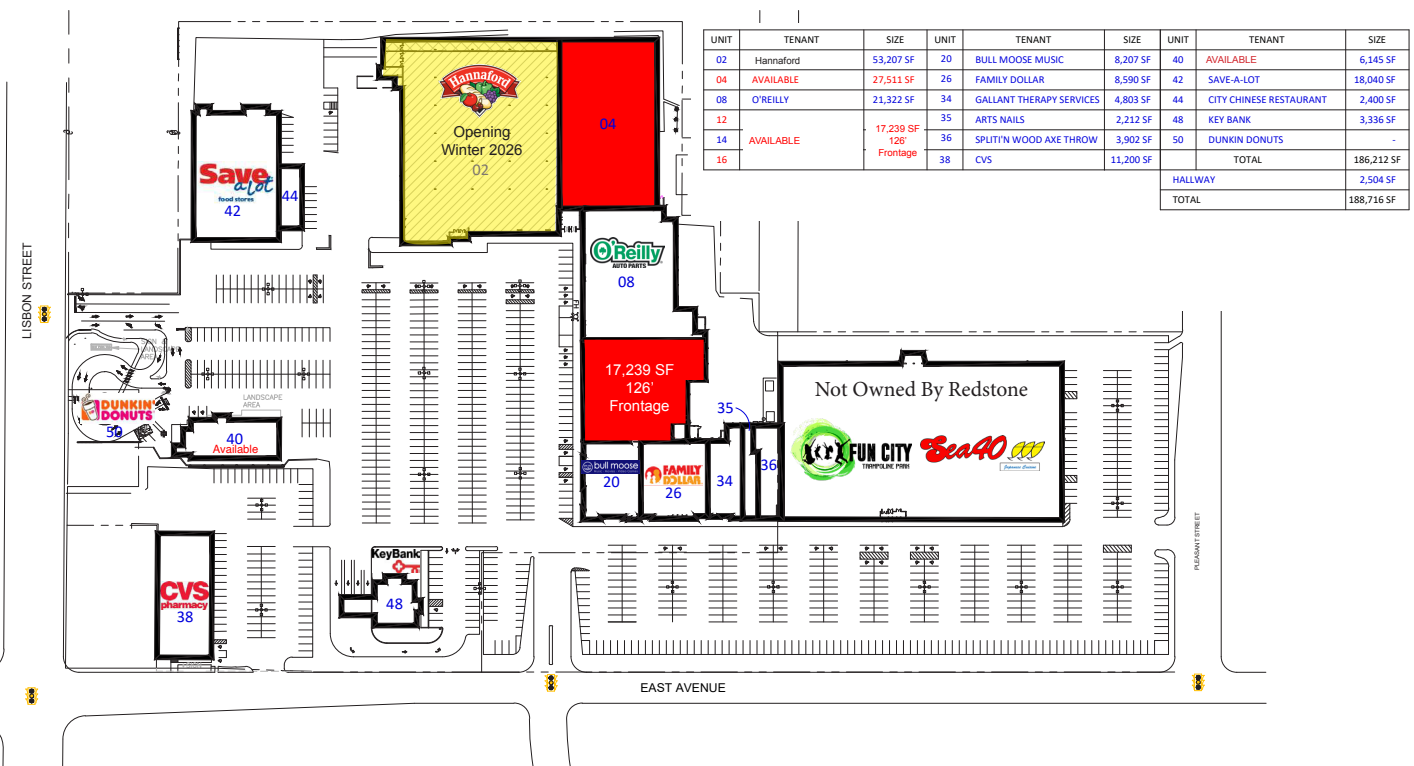
FOR LEASE

20 EAST AVENUE • LEWISTON - MAINE

AVAILABLE:

18,040 SF / 17,239 SF SUBDIVIDABLE / 17,239 SF 6,145 SF

SITE PLAN

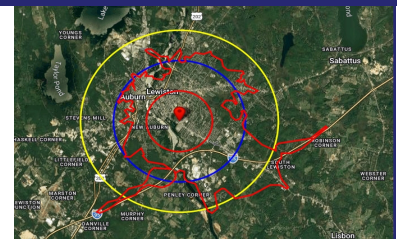


PROPERTY SPECIFICATIONS

- **Space Available: 3,000 SF - 18,040 SF**
- **Rental Rate: \$12.00 - \$18.00 psf NNN**

DEMOGRAPHICS

2025	1 Mile	2 Mile	3 Mile	7 Min
Population	15,054	37,277	50,465	35,020
# of Households	6,355	15,600	21,124	14,595
Median HH Income	\$50,333	\$57,786	\$62,090	\$55,592



WRE Commercial Brokers, is representing the Owner in the marketing, negotiation, and sale and/or lease of this property. While information furnished is from sources deemed reliable, no warranty or representation, express or implied, is made as to the accuracy of information contained herein, and same is submitted subject to errors, omissions, change of price, rental or other conditions, withdrawal without notice, and to any special listing conditions imposed by our principals.

CONTACT INFORMATION



795 Roosevelt Trail - Windham, ME 04062
Jay Wise - C: 207.329.3499
jay@wrebrokers.com - www.wrebrokers.com