

1201 Hall Street



OWENSBORO, KY



BUILDING ONLY — NOW AVAILABLE FOR \$550,000

- Building-only offering — operating business has sold; real estate now available separately
- Offered at \$550,000 for a centrally located Owensboro commercial property
- 9,244 SF per CoStar / ±9,904 SF per public record — buyer to verify
- ±0.453-acre commercial site with on-site parking
- Flexible layout for owner-user, retail/service, contractor, showroom, production, or investment use
- Concrete block/brick construction with slab foundation, central gas heat, and electric AC per public record
- Public record notes second-floor apartments — buyer to verify zoning, CO, and permitted uses
- Located at 1201 Hall St with convenient access to Owensboro's central commercial corridors





SUN WINDOWS & DOORS

modern Modern Welding Company, Inc.

SUPERIOR ROOFING & CONSTRUCTION

AUDUBON FEDERAL CREDIT UNION

GREEN RIVER DISTRICT HEALTH DEPARTMENT

BRECKENRIDGE UNITED METHODIST CHURCH

THE UNIQUE NEST FURNITURE

PRICE LOWERED

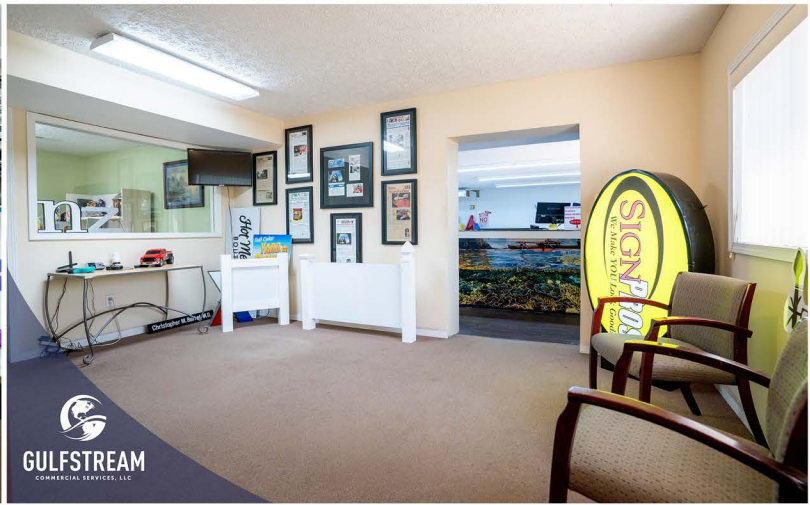
LIFE COMMUNITY CHURCH

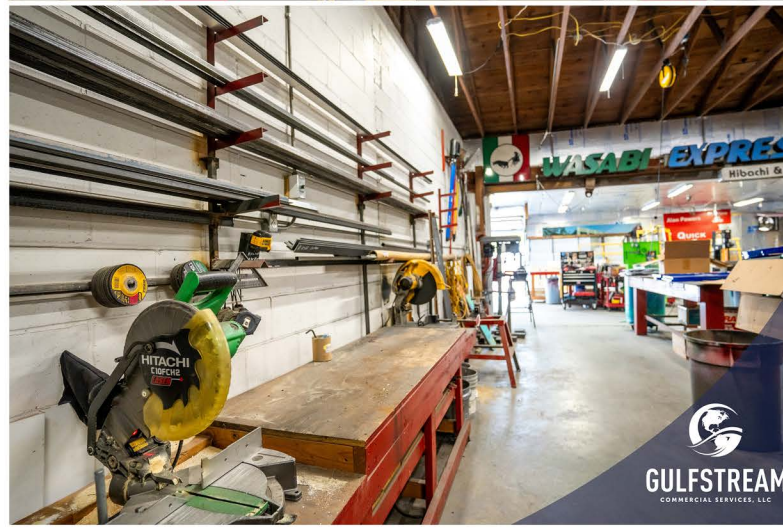
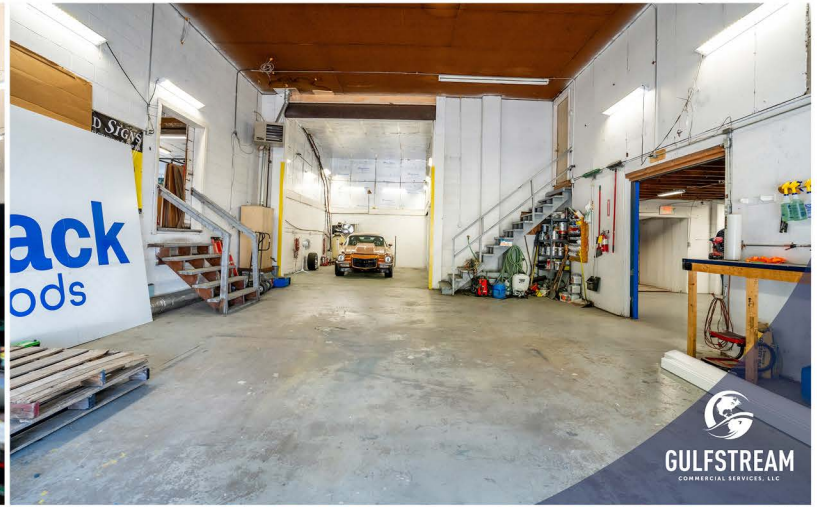
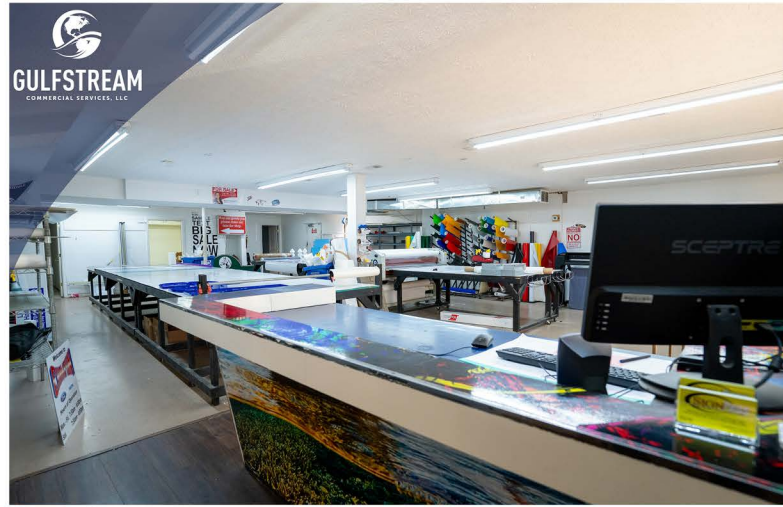
Immediate Care Center
by Owensboro Medical Practice

GULFSTREAM
COMMERCIAL SERVICES, LLC



GULFSTREAM
COMMERCIAL SERVICES, LLC







SCOTT HIGDON
AGENT & VP, PROPERTY MANAGEMENT

Owensboro, KY
(270) 993-9198
shigdon@gulfstreamdev.com



FAHR JUNEJA
PARTNER & PRINCIPAL BROKER

Louisville, KY
(502) 744-1465
fahr@gulfstreamdev.com



GULFSTREAM

COMMERCIAL SERVICES, LLC