

ARI MENCIAS
ARI@CBI-COMMERCIAL.COM
310.943.8534
CA DRE#02085900



9301 WILSHIRE BLVD.
SUITE 313
BEVERLY HILLS
CA 90210

FOR SUBLEASE



DO NOT DISTURB THE OCCUPANT



TABLE OF CONTENTS

OFFERING
SUMMARY 01

PROPERTY
HIGHLIGHTS 02

OFFERING SUMMARY

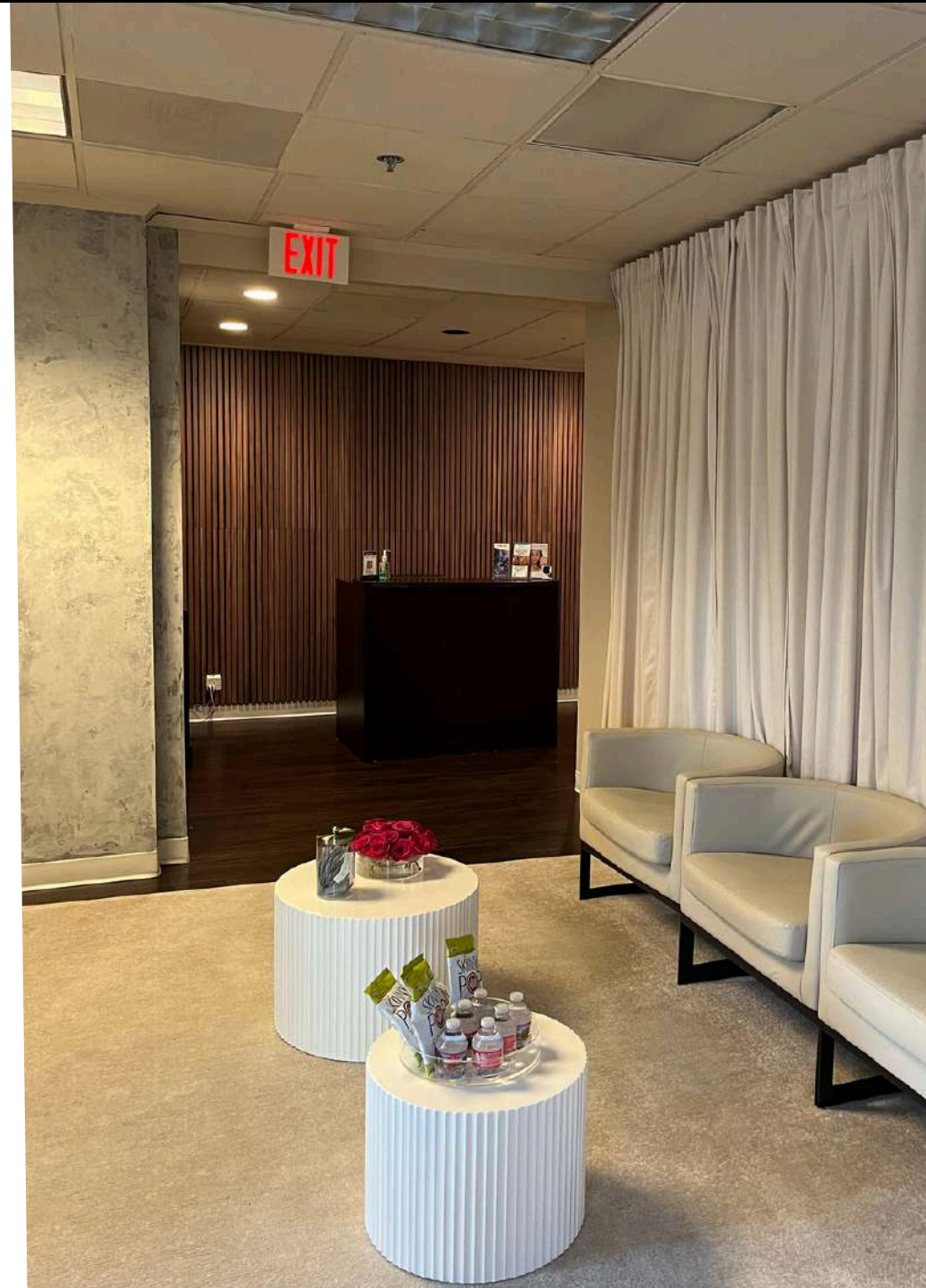
 \$5.20 SF MG

PROPERTY DESCRIPTION

PROPERTY ADDRESS 9301 WILSHIRE BLVD., SUITE 313

CITY, STATE, ZIP BEVERLY HILLS, CA 90210

TOTAL BUILDING AREA 1,183SF



PROPERTY HIGHLIGHTS

- Class A office building located in the golden triangle
- Move in ready
- Ample monthly and visitor parking on site
- Exceptional views
- On-site management






LISTED BY:

ARI MENCIAS
CA DRE #02085900
ARI@CBI-COMMERCIAL.COM
310.943.8534



11766 WILSHIRE BOULEVARD, SUITE 1120, LOS ANGELES,
CA, 90025, UNITED STATES
CA DRE #01523713
(310) 943-8530
INFO@CBICOMMERCIAL.COM