



## Southcentre Office Tower

### Available Premises

- Suite 200: 2,472 sf
- Suite 500: 15,543 sf

### Rate and Term

- Market Rate
- Operating Cost: \$18.45 psf (2021 est.)
- Term Expiry: July 30, 2023

### Parking

- 1 stall per 297 sf
- Parking rate: \$95.00 reserved/\$75.00 unreserved

### Highlights

- Move-in ready, fully furnished office spaces
- On-site coffee shop
- 24/7 security
- Walking distance to over 250 retail amenities at Willowpark Village and Southcentre Mall

## Get more information

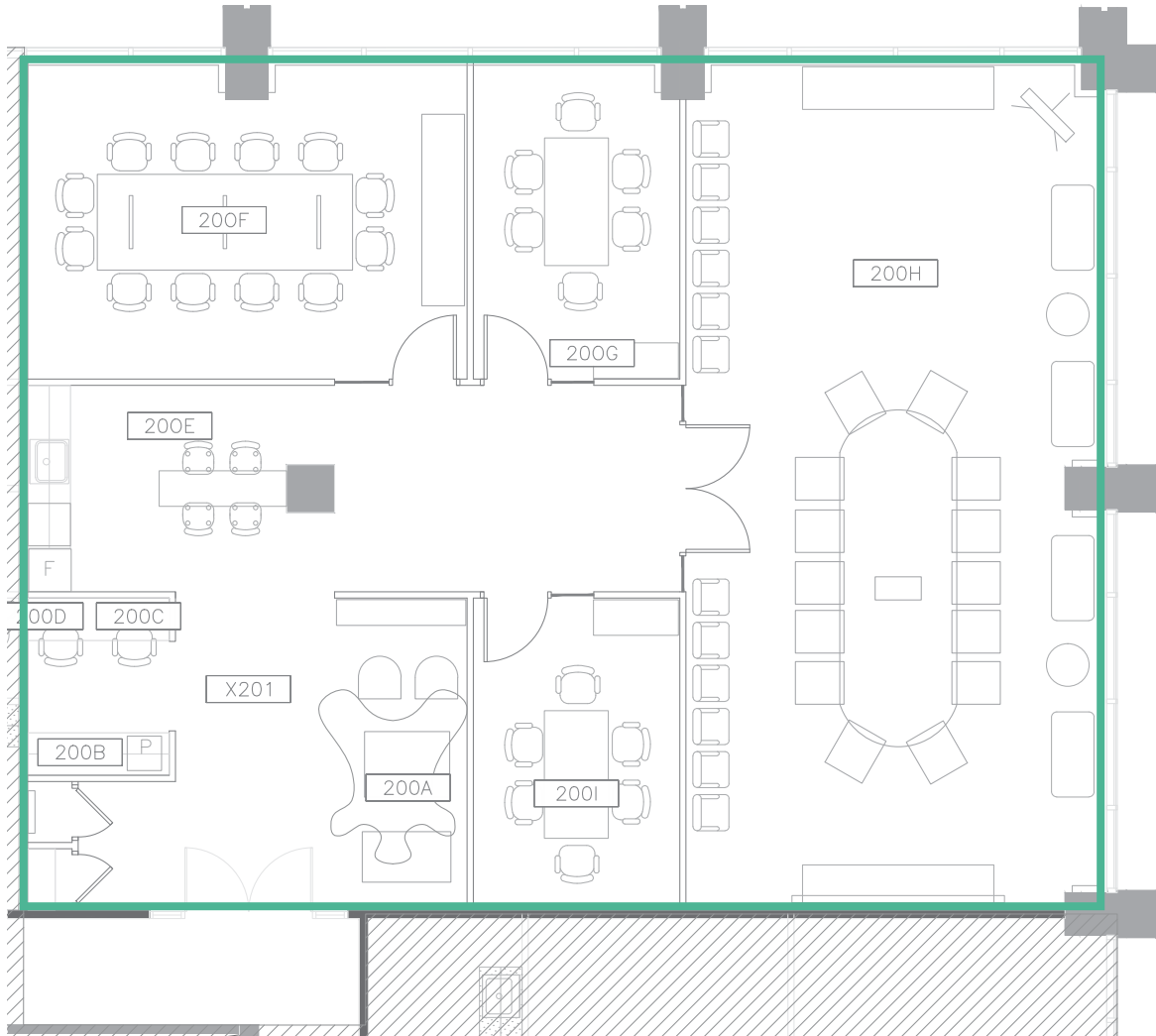
**Glenn Simpson**, Principal,  
Executive Vice President  
403 232 4329  
[glenn.simpson@avisonyoung.com](mailto:glenn.simpson@avisonyoung.com)

**Nairn Rodger**, Principal  
Executive Vice President  
403 232 4341  
[nairn.rodger@avisonyoung.com](mailto:nairn.rodger@avisonyoung.com)

**Nik Kosman**, Associate  
587 293 3362  
[nikolas.kosman@avisonyoung.com](mailto:nikolas.kosman@avisonyoung.com)

[avisonyoung.com](http://avisonyoung.com)

2nd Floor  
2,472 SF



5th Floor  
15,543 SF

