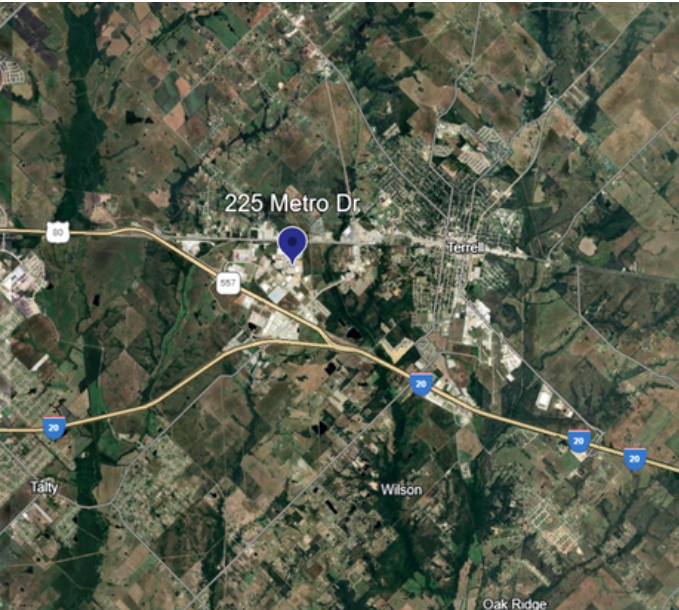


FOR LEASE



AVAILABLE: 2,500-7,030 SF
225 METRO DR, BLDG 200, TERRELL, TX 75160



PROPERTY FEATURES

- Available SF: 2,500 - 7,030
Suite A - 4,530 SF | 2x GL Doors
Suite B - 2,500 SF | 3x GL Doors
- 16' Clear Height
- 5 Grade Level Doors
- 3 Phase Power
- 100% Warehouse Space
- Paved & Fenced Outside Storage

NIKO PADILLA

Market Director
(214) 226-3381
npadilla@mercerc-company.com

WILLIAM LEMASTERS, SIOR

Vice President
(214) 998-8076
wlemasters@mercerc-company.com

AVAILABLE: 2,500-7,030 SF
225 METRO DR, BLDG 200, TERRELL, TX 75160



NIKO PADILLA
Market Director
(214) 226-3381



WILLIAM LEMASTERS, SIOR
Vice President
(214) 998-8076

The information contained herein has been given to us by the owner of the property or other sources we deem reliable. We have no reason to doubt its accuracy, but we do not guarantee it. All information should be verified before purchase or lease.