

For Lease

International Pl. & Icehouse Ave.



[Click for a Virtual Tour](#) 

1210 Icehouse Ave.
Sparks, NV 89431

Michael Keating, SIOR
Partner
775.386.9727
mkeating@logicCRE.com
S.0174942

Michael Dorn
Vice President
775.453.4436
mdorn@logicCRE.com
S.0189635

Listing Snapshot



Negotiable
Lease Rate



± 10,000 SF
Total Square Footage



\$0.21 PSF
Estimated NNN

Property Highlights

- Sparks industrial core location
- Less than 5-minutes from I-80
- Industrial zoning
- Built in 1990

Demographics

	1-mile	3-mile	5-mile
2025 Population	10,163	116,261	245,490
2025 Average Household Income	\$72,217	\$78,758	\$94,046
2025 Total Households	4,937	47,307	100,827





Hotels / Casinos

Nugget
CASINO RESORT

± 1,600 Rooms

Multifamily

THE DECO

± 209 Units

SUBJECT

± 10,000 SF

Industrial / Office

GST International

Industrial / Office

Culligan Water of Reno

Industrial / Office

Deeside Trading Company

Industrial / Office

Paramount Craftsman Services

Industrial / Office

Thomas Petroleum

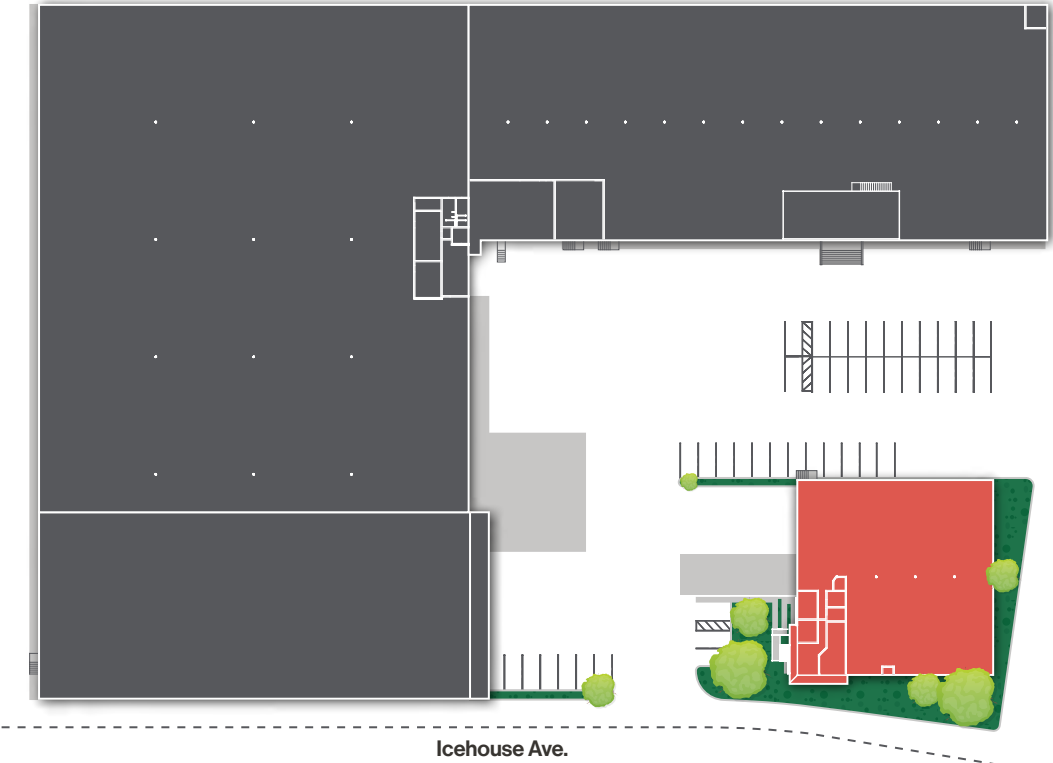
Industrial / Office

Affordable Glass & Glazing

Dwight D. Eisenhower Hwy. // 137,000 CPD



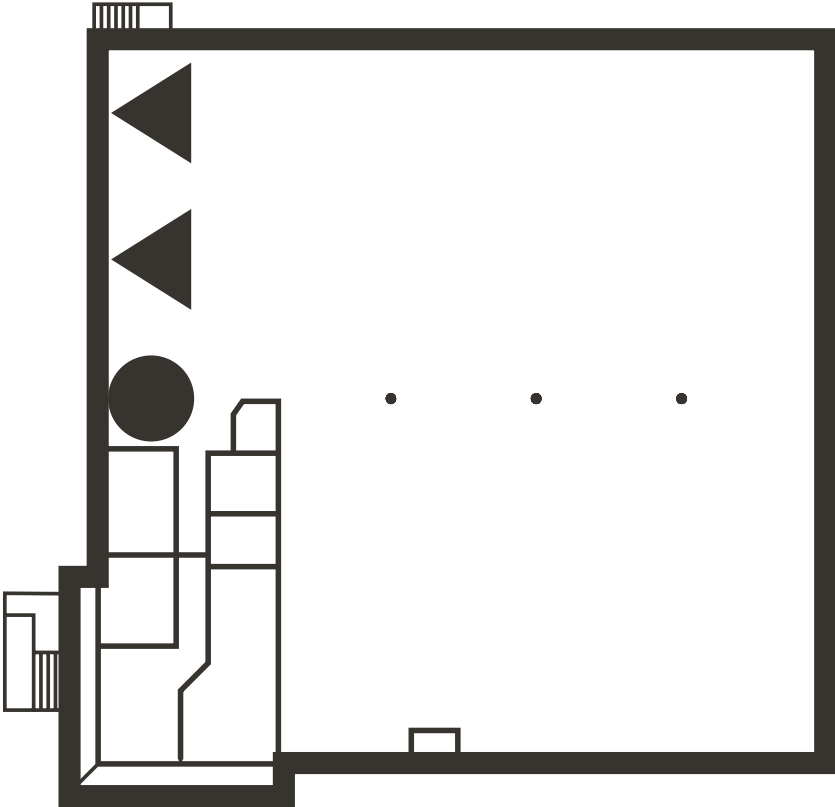
Icehouse Ave.



Floor Plan | 1210 Icehouse Ave.

● Grade Level Door ▲ Dock Door

- Clear Height: 18'-20'
- 20'x50' column spacing
- Power: 225 Amp, 408V, 3-phase
- Grade-Level Door: One (1)
- Dock Doors: Two (2)
- Sprinklers: Wet
- Built in 1990
- Available to Occupy: 6/1/26



Property Photos



LOGIC Commercial Real Estate

Specializing in Brokerage and Receivership Services



Join our email list and
connect with us on LinkedIn

The information herein was obtained from sources deemed reliable; however LOGIC Commercial Real Estate makes no guarantees, warranties or representation as to the completeness or accuracy thereof.

For inquiries please reach out to our team.

Michael Keating, SIOR
Partner
775.386.9727
mkeating@logicCRE.com
S.0174942

Michael Dorn
Vice President
775.453.4436
mdorn@logicCRE.com
S.0189635