

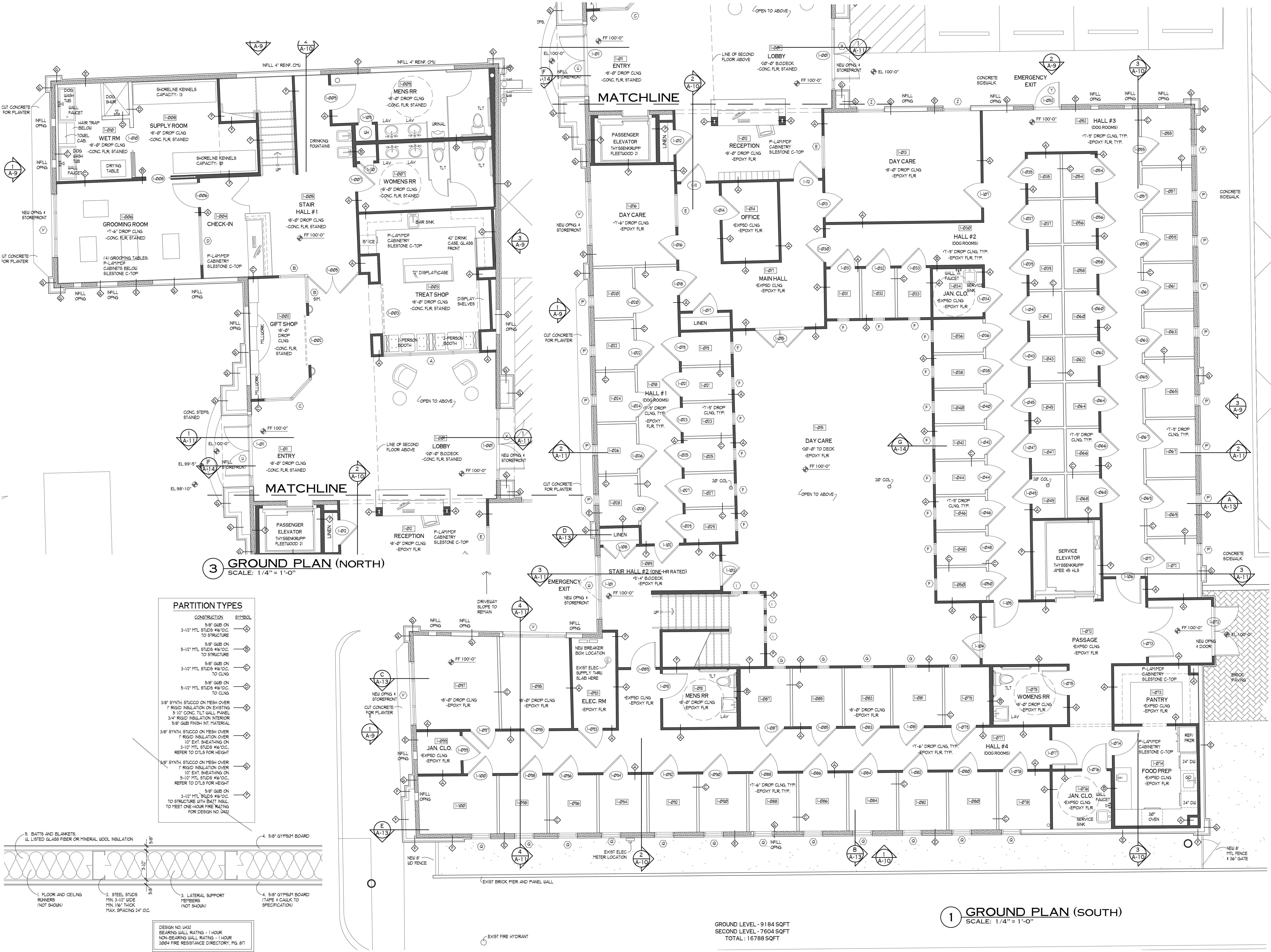


WALTON & WALTON  
1407 TEXAS ST., SUITE 104  
FORT WORTH, TEXAS 76104  
(817) 732-1330  
(817) 737-4130 FAX

**SPAPAWS**  
PET HOTEL & SHOPS  
FORT WORTH, TEXAS

FOR  
REFERENCE  
ONLY  
FIELD VERIFY  
SHEET

DECEMBER 2006

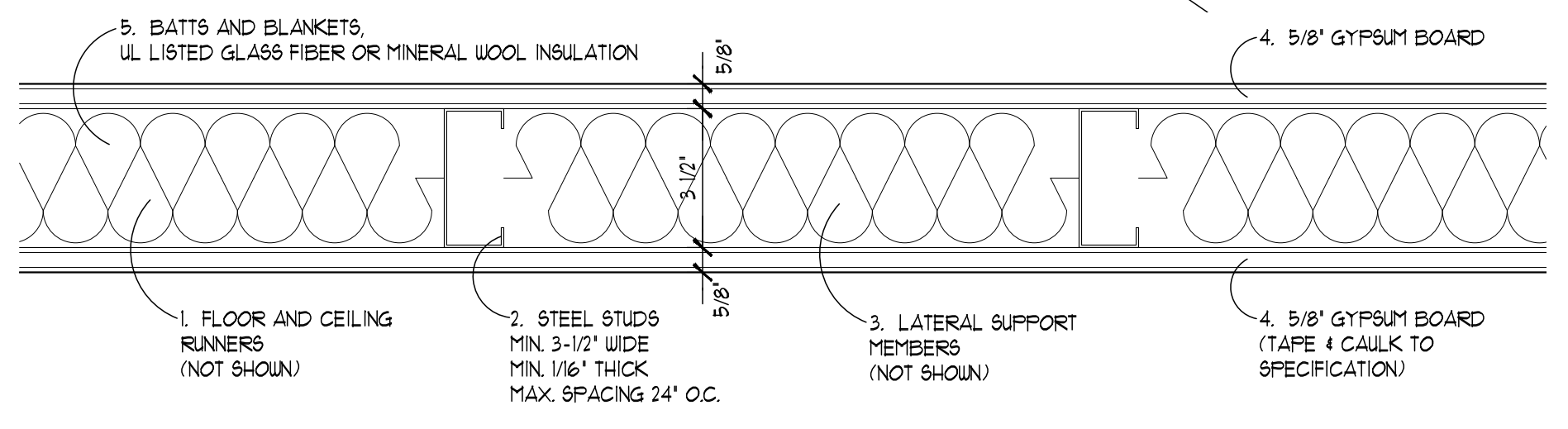


**3 GROUND PLAN (NORTH)**  
SCALE: 1/4" = 1'-0"

**1 GROUND PLAN (SOUTH)**  
SCALE: 1/4" = 1'-0"

**PARTITION TYPES**

CONSTRUCTION	SYMBOL
3-1/2" GIB ON 3-1/2" MTL STUDS @ 16" O.C. TO STRUCTURE	(Symbol)
5/8" GIB ON 5-1/2" MTL STUDS @ 16" O.C. TO STRUCTURE	(Symbol)
3-1/2" GIB ON 3-1/2" MTL STUDS @ 16" O.C. TO CLNG	(Symbol)
5/8" GIB ON 5-1/2" MTL STUDS @ 16" O.C. TO CLNG	(Symbol)
3/8" SYNTH STUCCO ON MESH OVER 1" RIGID INSULATION OVER 5/16" EXT. SHEATHING ON 3-1/2" MTL STUDS @ 16" O.C. REFER TO DTLS FOR HEIGHT	(Symbol)
3/8" SYNTH STUCCO ON MESH OVER 1" RIGID INSULATION OVER 1/2" EXT. SHEATHING ON 3-1/2" MTL STUDS @ 16" O.C. REFER TO DTLS FOR HEIGHT	(Symbol)
3-1/2" GIB ON 3-1/2" MTL STUDS @ 16" O.C. TO STRUCTURE WITH BATT INSUL TO MEET ONE-HOUR FIRE RATING FOR DESIGN NO. U452	(Symbol)



DESIGN NO. U452  
BEARING WALL RATINGS - 1 HOUR  
NON-BEARING WALL RATINGS - 1 HOUR  
2004 FIRE RESISTANCE DIRECTORY, PG. 817

GROUND LEVEL - 9184 SQFT  
SECOND LEVEL - 7604 SQFT  
TOTAL: 16788 SQFT