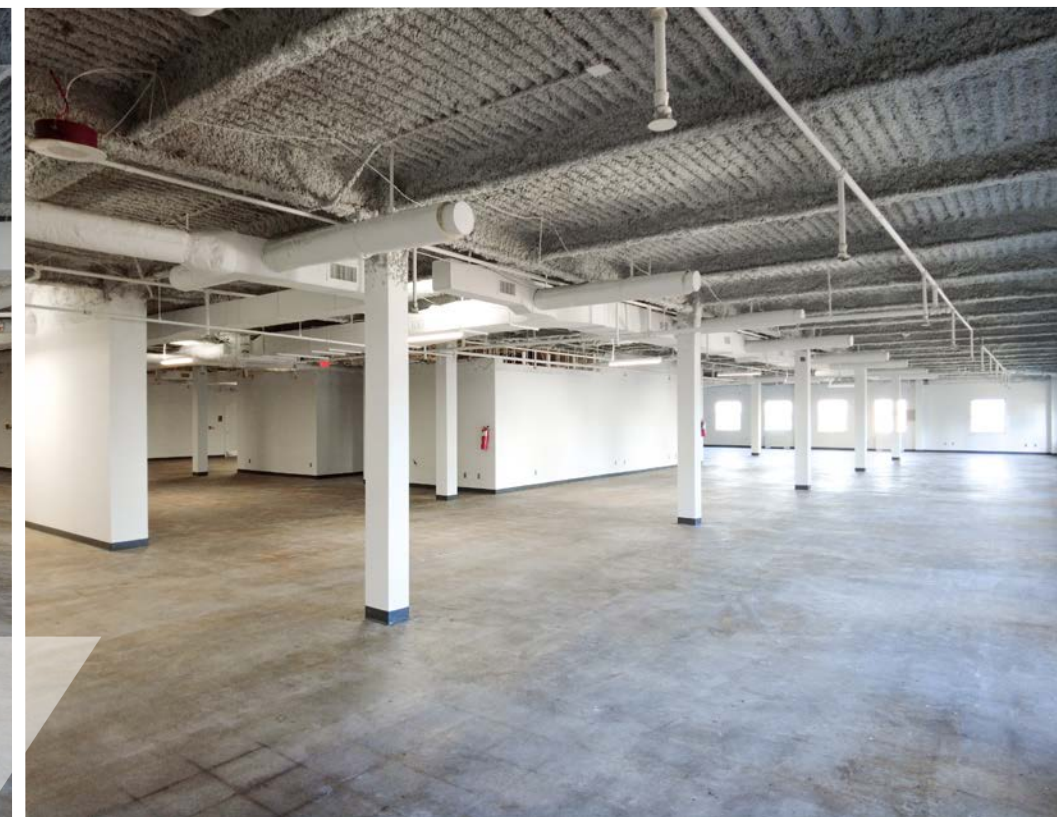
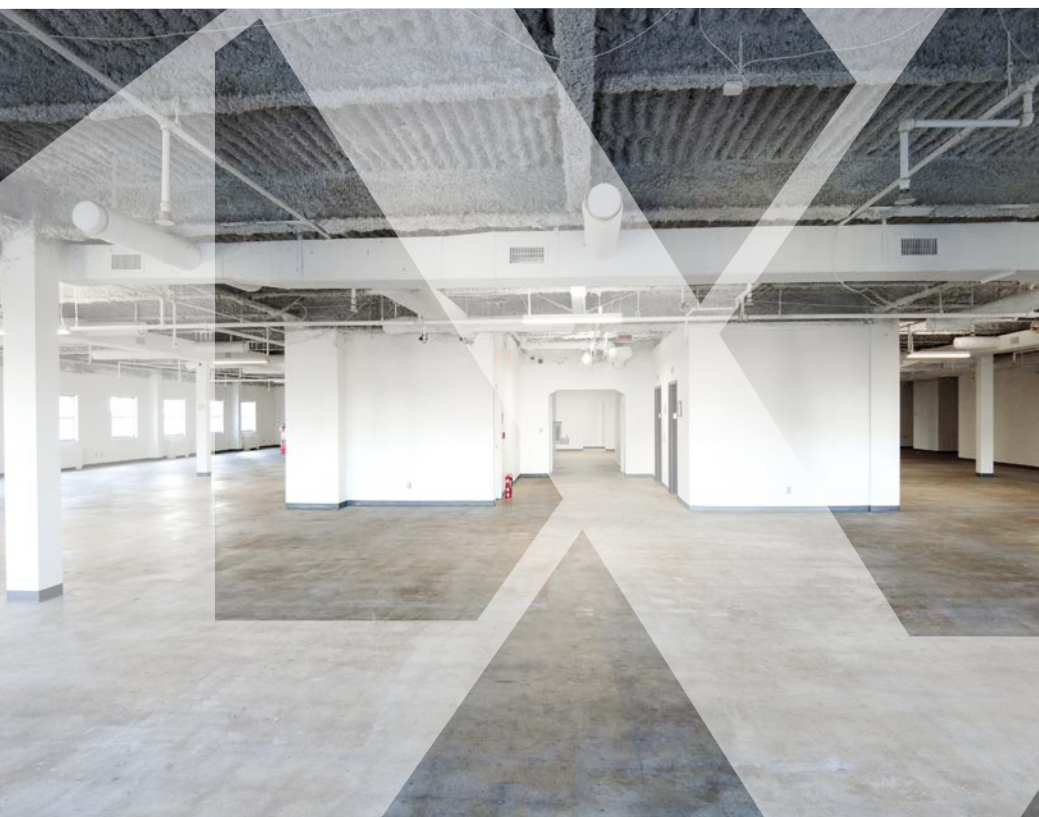




**FOR LEASE  
OFFICE SPACE**

**401 CHURCH STREET & 159 4TH AVE FLOOR PLANS**

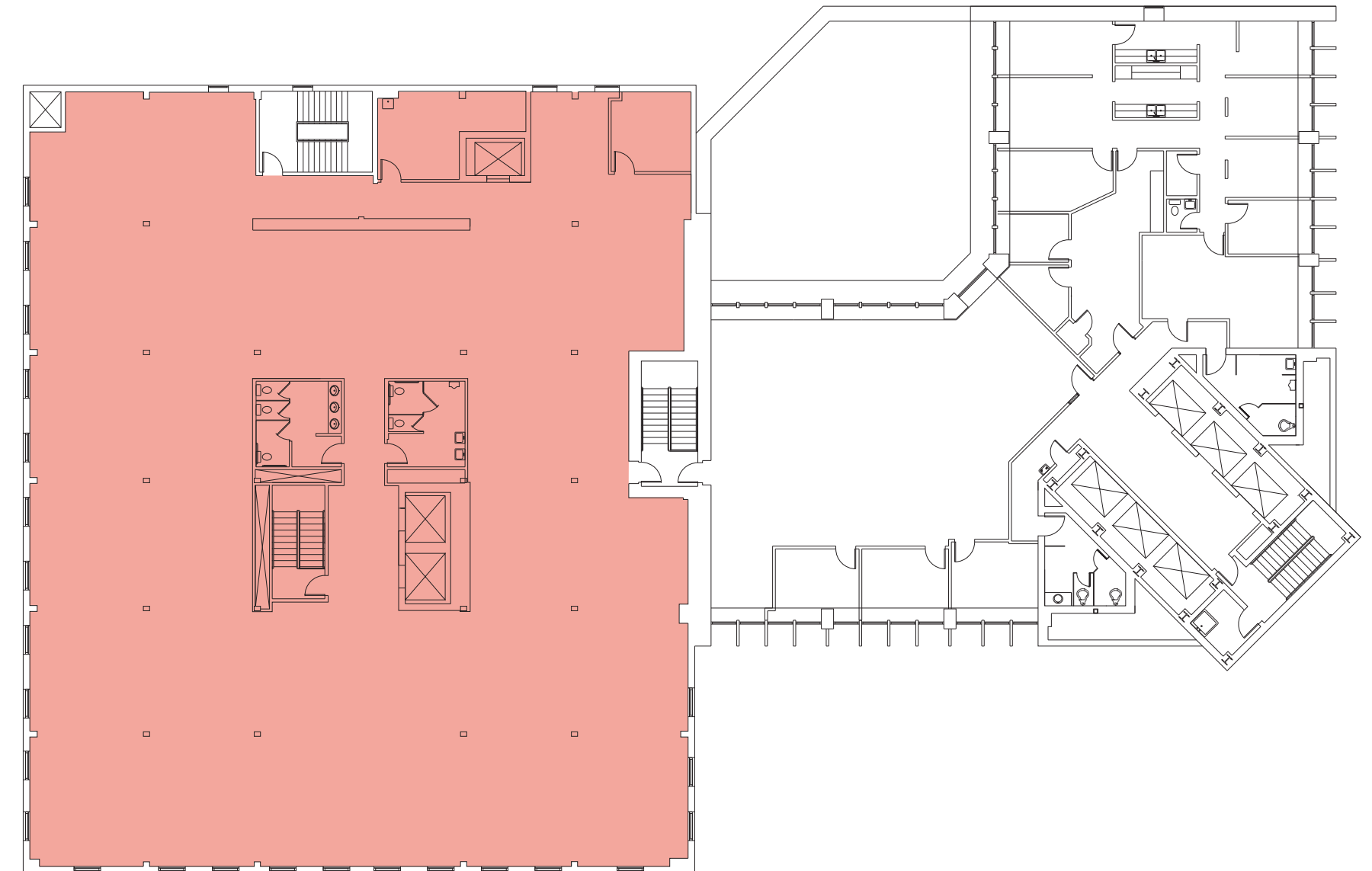




**SUITE 900A**

10,969 SF

AVAILABLE NOW





**DAN BAUCHIERO**

Dan.Bauchiero@foundrycommercial.com  
615.423.6851

**SHELBY HALL**

Shelby.Hall@foundrycommercial.com  
615.771.0770