

JAMESTOWN OFFICE COMPLEX

3037 NW 63RD, OKLAHOMA CITY, OK 73116



PROPERTY DESCRIPTION

Variety of spaces available. The spaces feature a variety of flooring types, 2' X 4' grid ceilings, floor to ceiling glass and newly remodeled common restrooms and common hallways.

- Convenient location
- Drive-up free surface parking on all sides
- Professionally managed with on-site engineering

LOCATION DESCRIPTION

Discover the vibrant NW Quadrant market surrounding Jamestown Office Park in Oklahoma City, OK. This coveted location offers unmatched convenience with quick access to major thoroughfares, dining options, and retail destinations. Experience the nearby energy of Classen Curve, Nichols Hills Plaza, and The Triangle at Classen Curve, providing a variety of shopping and dining experiences. Enjoy the serene outdoor spaces at beautiful Lake Hefner. With a dynamic blend of suburban amenities and the natural beauty of its serene courtyard, this building presents an exceptional opportunity for investors and tenants seeking an ideal office location.

C. DEREK JAMES

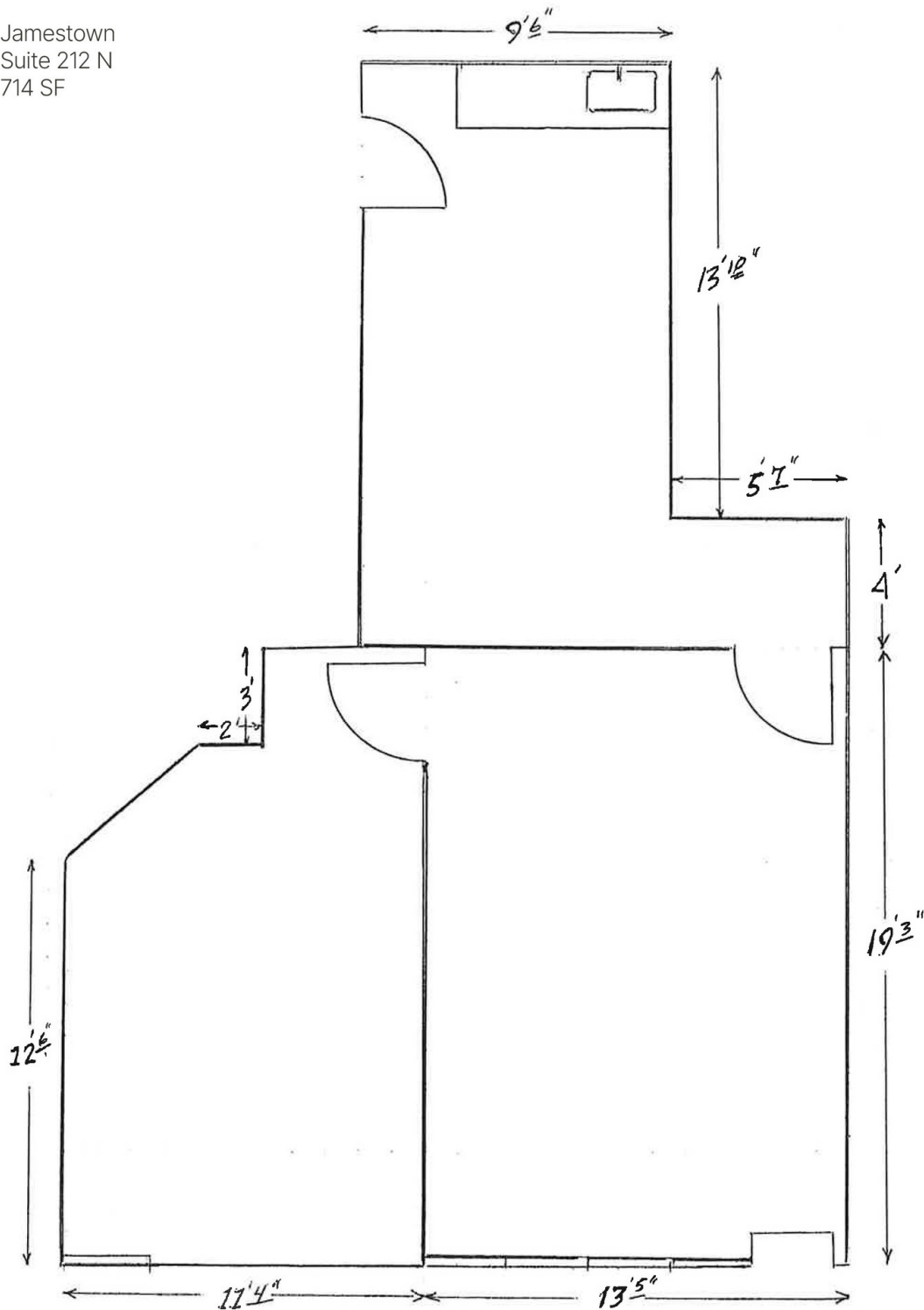
djames@priceedwards.com

O: 405.239.1206 C: 405.640.7210

OFFERING SUMMARY

Lease Rate:	\$15.00 SF/yr (Gross)
Building Size:	77,175 SF
Year Built / Renovated:	1980 / 2012
Market:	NW OKC
Cross Streets:	NW 63rd & N. May Avenue

Jamestown
Suite 212 N
714 SF



C. DEREK JAMES

djames@priceedwards.com

O: 405.239.1206 C: 405.640.7210