

0.68 - 1.65 Acres - PRICE REDUCED

Retail or Industrial Uses



BROWN
COMMERCIAL GROUP, INC.

733 AND 735 OAKRIDGE DRIVE, ROMEOVILLE, IL 60446

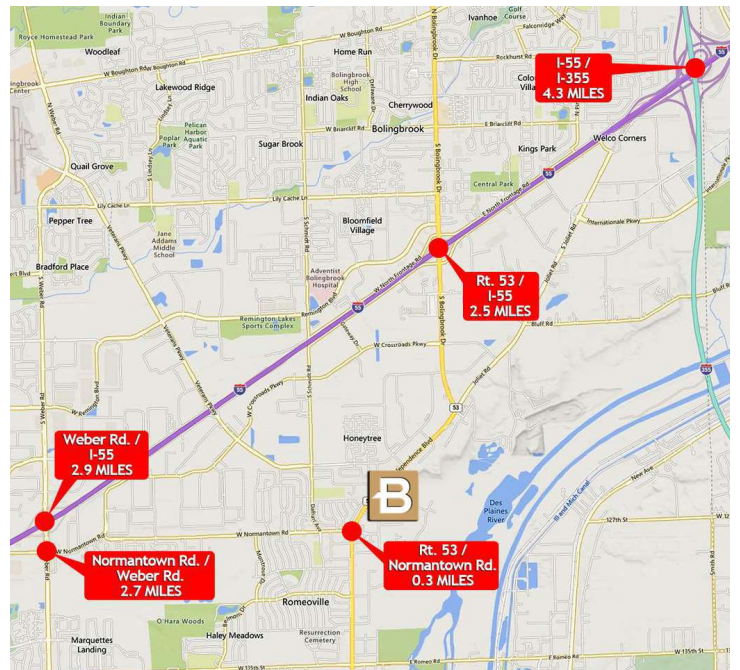


LOCATION DESCRIPTION

Rare vacant lots in established business area. Easy access to major transportation routes via nearby Rt. 53, I-55.

PROPERTY OVERVIEW

- Two Adjacent Lots Totaling 1.65 Acres
- Can Be Purchased Separately or Together
- 733 Oakridge - 0.68 Acres. PIN: 12-02-27-319-002-0000
- 735 Oakridge - 0.97 Acres. PIN: 12-02-27-319-001-0000
- Current Zoning - B3: Highway / Regional Shopping
- Potential uses with current zoning: Animal hospital, business and commercial schools, medical uses, HVAC sales/service, etc.
- Village will consider industrial uses such as manufacturing or distribution.
- Utilities to Site
- Great Frontage on High-Traffic Rt. 53
- Sale Price - 733 Oakridge - ~~\$399,500 (\$13.49 SF)~~ \$375,000 (\$12.66 SF)
- Sale Price - 735 Oakridge - ~~\$575,000 (\$13.61 SF)~~ \$535,000 (\$12.66 SF)
- Sale Price - 733 & 735 Oakridge - ~~\$974,500 (\$13.56 SF)~~ \$910,00 (\$12.66 SF)



MASON HEZNER

847.758.9200 x306

MHEZNER@BROWNCOMMERCIAL.COM

CANDACE SCURTO

847.758.9200 x311

CSCURTO@BROWNCOMMERCIAL.COM

BROWNCOMMERCIAL.COM

// 1400 E. HIGGINS RD. SUITE A, ELK GROVE VILLAGE, IL 60007

// 847.758.9200

No warranties or representations is made as to the accuracy of the foregoing information. Terms and availability are subject to changes or withdrawal without notice

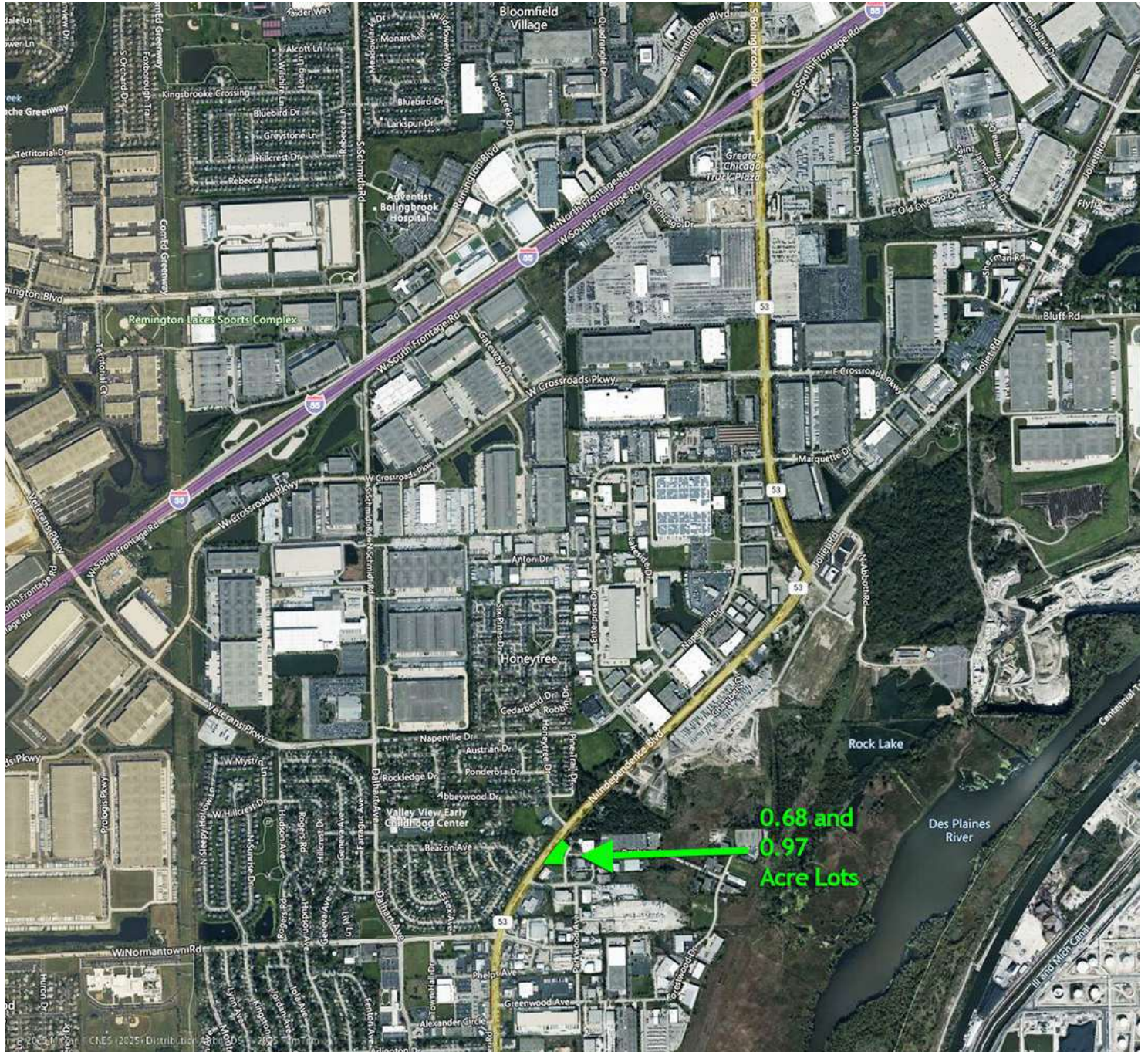
0.68 - 1.65 Acres - PRICE REDUCED

Retail or Industrial Uses



BROWN
COMMERCIAL GROUP, INC.

733 AND 735 OAKRIDGE DRIVE, ROMEOVILLE, IL 60446



MASON HEZNER

847.758.9200 x306

MHEZNER@BROWNCOMMERCIAL.COM

CANDACE SCURTO

847.758.9200 x311

CSCURTO@BROWNCOMMERCIAL.COM

BROWNCOMMERCIAL.COM

//

1400 E. HIGGINS RD. SUITE A, ELK GROVE VILLAGE, IL 60007

//

847.758.9200

No warranties or representations is made as to the accuracy of the foregoing information. Terms and availability are subject to changes or withdrawal without notice