



# 13,109 SF AVAILABLE

3100 Northwoods Place NW

Suite BCD | Peachtree Corners, GA 30071



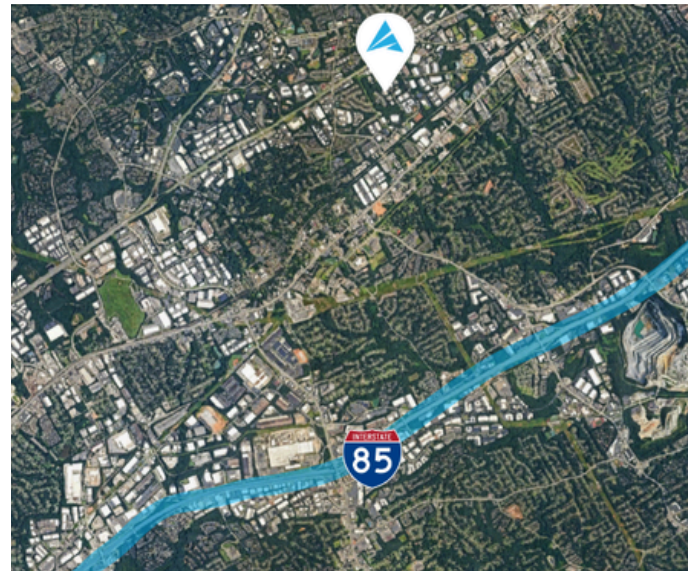
FULLY HVAC SPACE

## FOR LEASE



### PROPERTY HIGHLIGHTS

- Total Size:** 13,109 SF
- Office:** 2,909 SF
- Warehouse:** 10,200 SF
- Loading:** Three (3) Dock High Doors
- Clear Height:** 14'
- Available:** Immediately
- Location:** +/- 3.5 miles from I-85  
+/- 7 miles from I-285  
+/- 18 miles from I-75  
+/- 31 miles from Atlanta Airport



For more information, please contact:

#### ANDY HEAD

Office: (404) 595 - 1466  
Cell: (404) 713 - 4601  
ahead@apexindustrialre.com

#### TREY WEGHORST

Office: (770) 264 - 9420  
Cell: (404) 276 - 9314  
tweghorst@apexindustrialre.com



Although the information contained therein was provided from sources believed to be reliable, Apex Industrial makes no representation, expressed or implied, as to its accuracy and said information is subject to errors, omissions or changes.



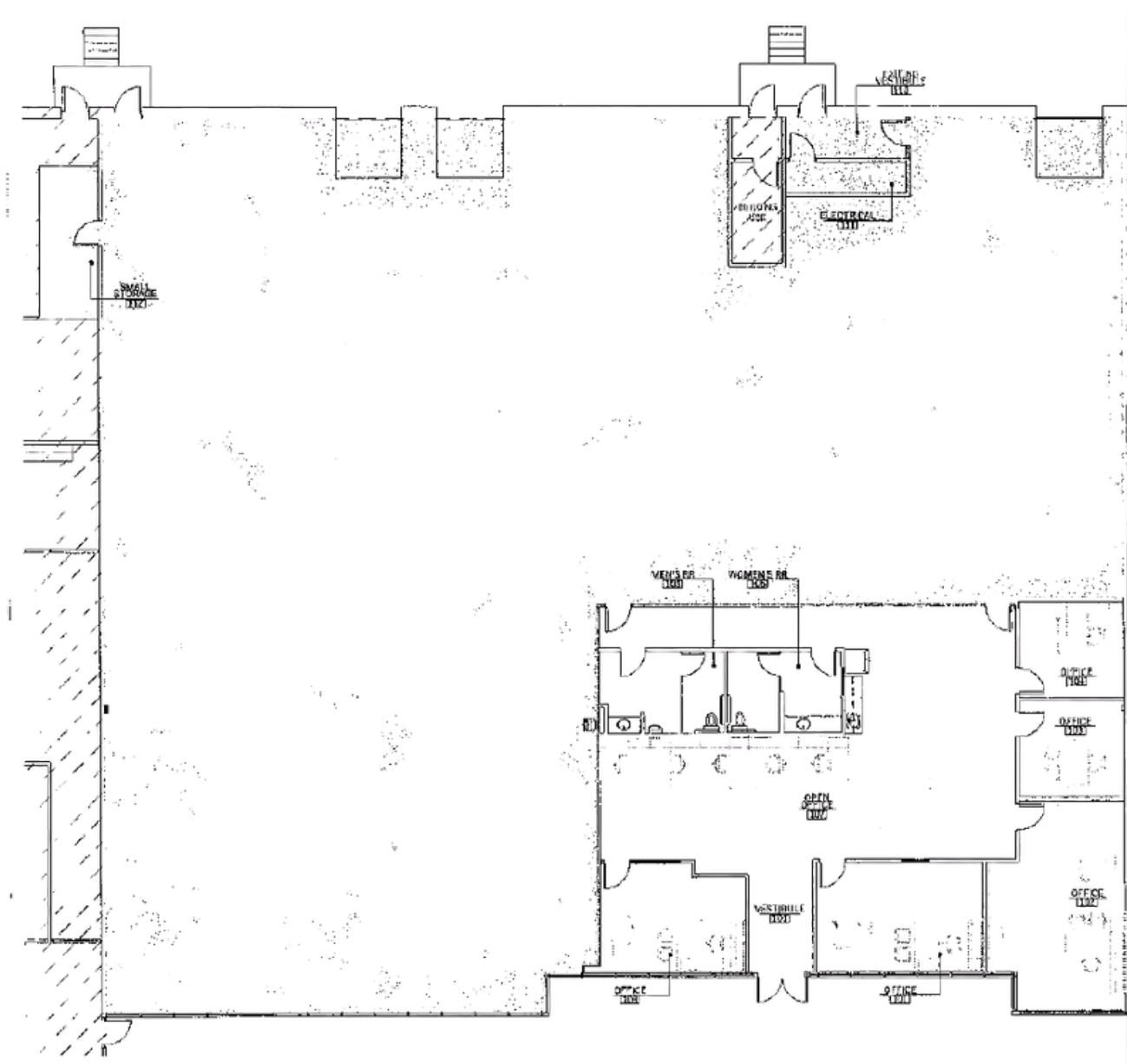
# 13,109 SF AVAILABLE

3100 Northwoods Place NW  
Suite BCD | Peachtree Corners, GA 30071



FULLY HVAC SPACE

## FLOOR PLAN



For more information, please contact:

### ANDY HEAD

Office: (404) 595 - 1466  
Cell: (404) 713 - 4601  
ahead@apexindustrialre.com

### TREY WEGHORST

Office: (770) 264 - 9420  
Cell: (404) 276 - 9314  
tweghorst@apexindustrialre.com



**APEX INDUSTRIAL**  
REAL ESTATE ADVISORS, LLC

Although the information contained therein was provided from sources believed to be reliable, Apex Industrial makes no representation, expressed or implied, as to its accuracy and said information is subject to errors, omissions or changes.