

ONTARIO PACIFIC BUSINESS CENTER

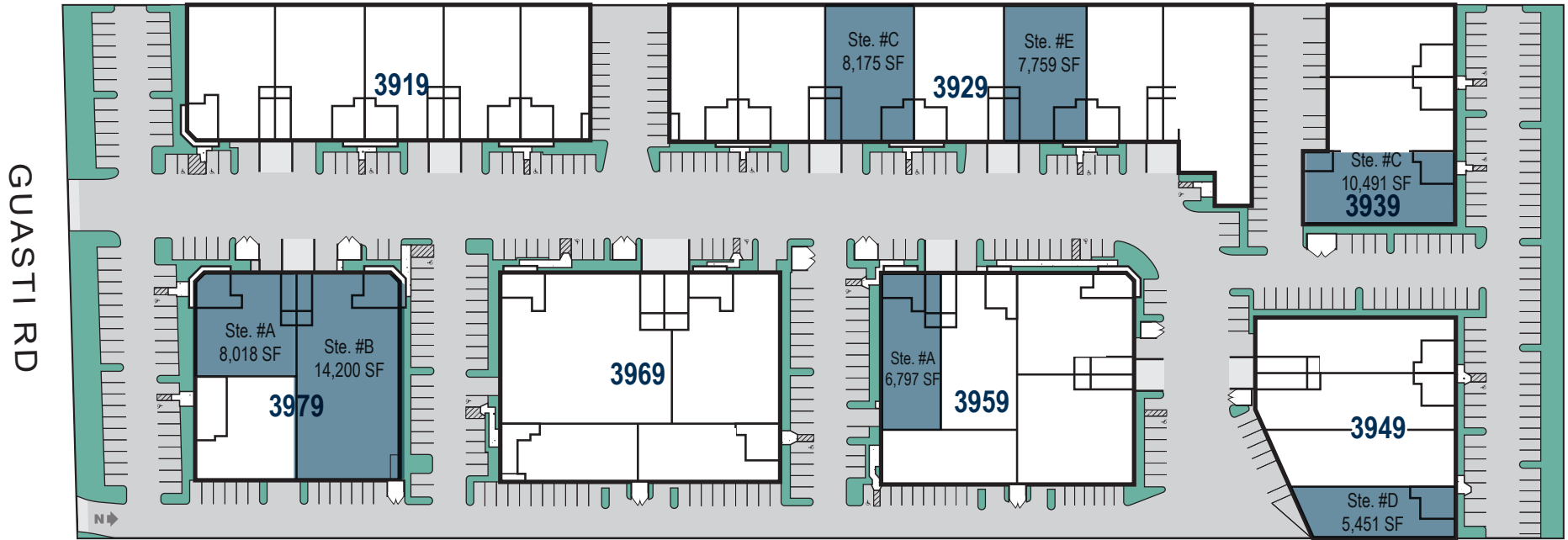
3919-3979 E GUASTI ROAD • ONTARIO, CA



ONTARIO PACIFIC BUSINESS CENTER

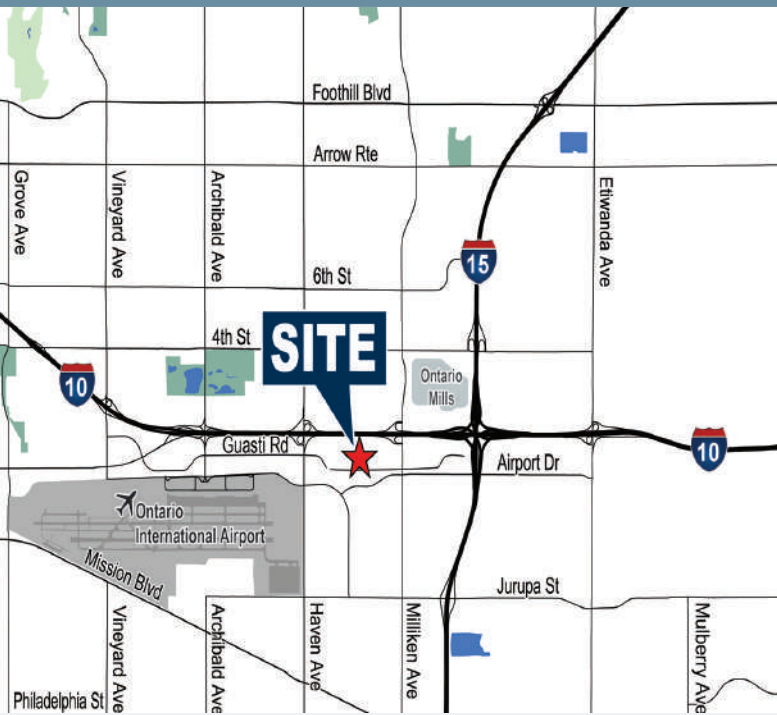
3919-3979 E GUAISTI ROAD • ONTARIO, CA

CURRENT AVAILABILITIES



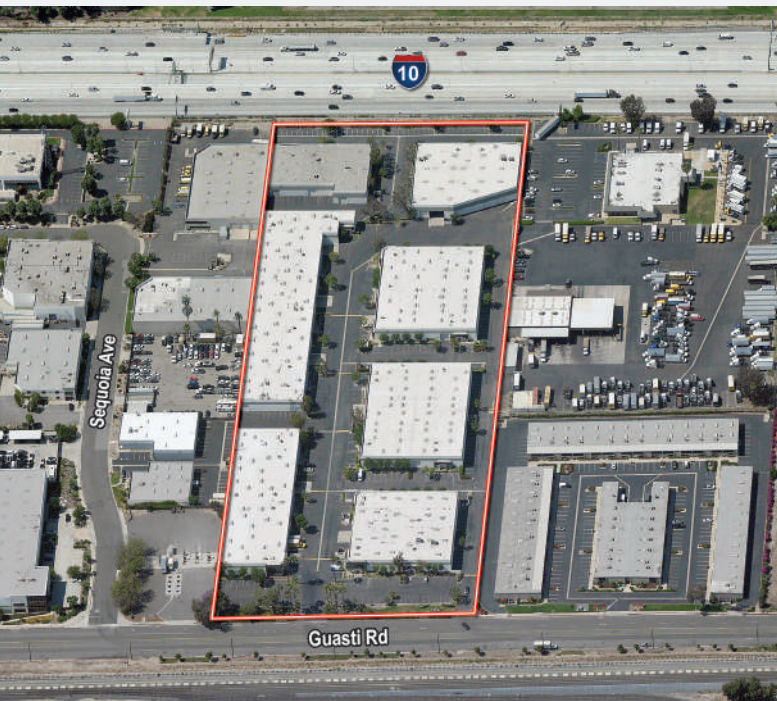
Address	Suites	Total Size SF	Office SF	Lease Rate PSF / NNN	Comments
3929 E Guasti Rd	C	±8,175	±836	\$1.40 / \$0.30	1 DH / 1 GL
3929 E Guasti Rd	E	±7,759	±833	\$1.40 / \$0.30	1 DH / 1 GL
3939 E Guasti Rd	C	±10,491	±3,639	\$0.60 / \$0.30 *Teaser Rate	1 GL
3949 E Guasti Rd	D	±5,451	±2,346	\$1.30 / \$0.30	1 GL
3959 E Guasti Rd	A	±6,797	±901	\$1.40 / \$0.30	1 DH / 1 GL
3979 E Guasti Rd	A	±8,018	±1,081	\$1.40 / \$0.30	1 DH / 1 GL
3979 E Guasti Rd	B	±14,200	±2,579	\$1.40 / \$0.30	1 DH / 1 GL

ONTARIO PACIFIC BUSINESS CENTER



Situated along the I-10 freeway, the Ontario Pacific Business Center offers excellent visibility and accessibility in a 254,861 square-foot business park. This professionally managed, high-image property provides leasing options ranging from 5,400 to 17,000 square feet, with each suite including office space and mezzanine space for light storage all included within the square footage of each suite.

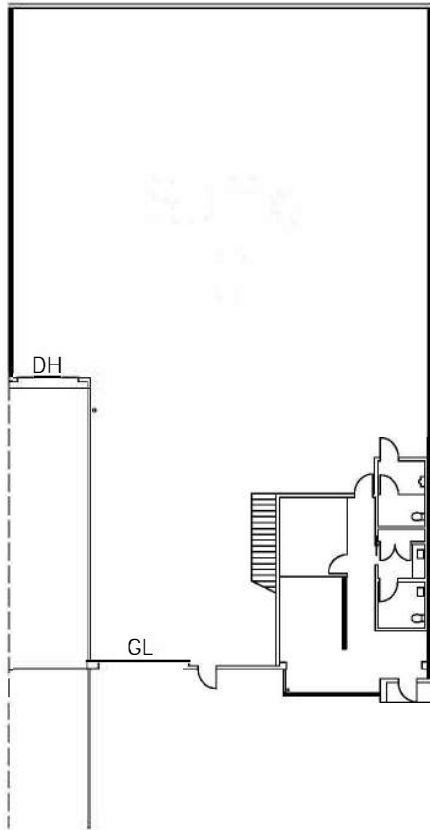
The business park is ideally located near Ontario International Airport, with convenient access to the Pomona (60), San Bernardino (I-10), and Ontario (I-15) freeways. Suites feature a clear height of 22 feet (verification needed), along with dock-high and ground-level loading options. Ample surface parking is available, and the entire park is fire sprinklered. Zoned for General Industrial use by the City of Ontario, this property is perfectly suited for a variety of business operations.



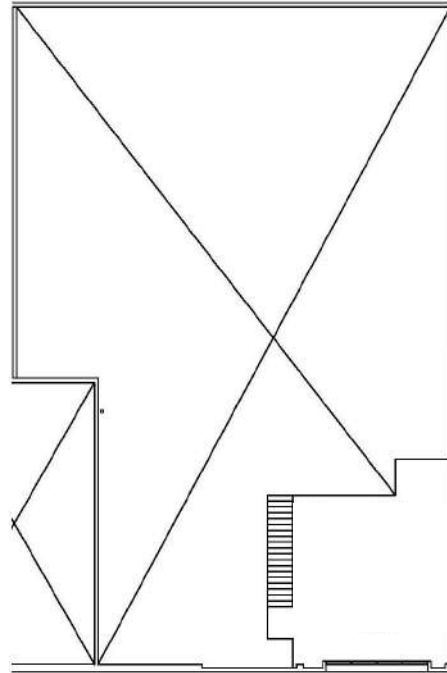
ONTARIO PACIFIC BUSINESS CENTER

3929 E GUASTI ROAD, STE C • ONTARIO, CA

First Floor



Mezzanine



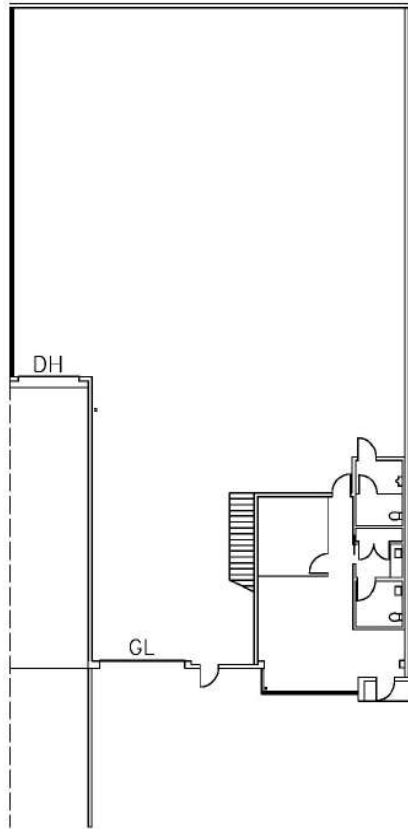
PROPERTY HIGHLIGHTS

- ±8,175 SF Total Square Footage
- ±836 SF of Office
- 22' Minimum clear height
- 1 Dock High Door
- 1 Ground level door
- Fire sprinklered

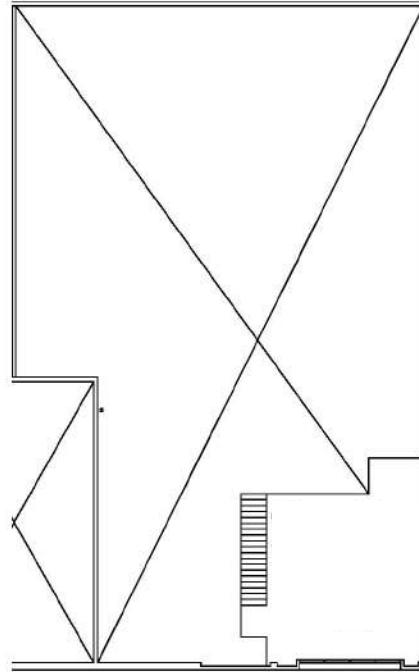
ONTARIO PACIFIC BUSINESS CENTER

3929 E GUASTI ROAD, STE E • ONTARIO, CA

First Floor



Mezzanine

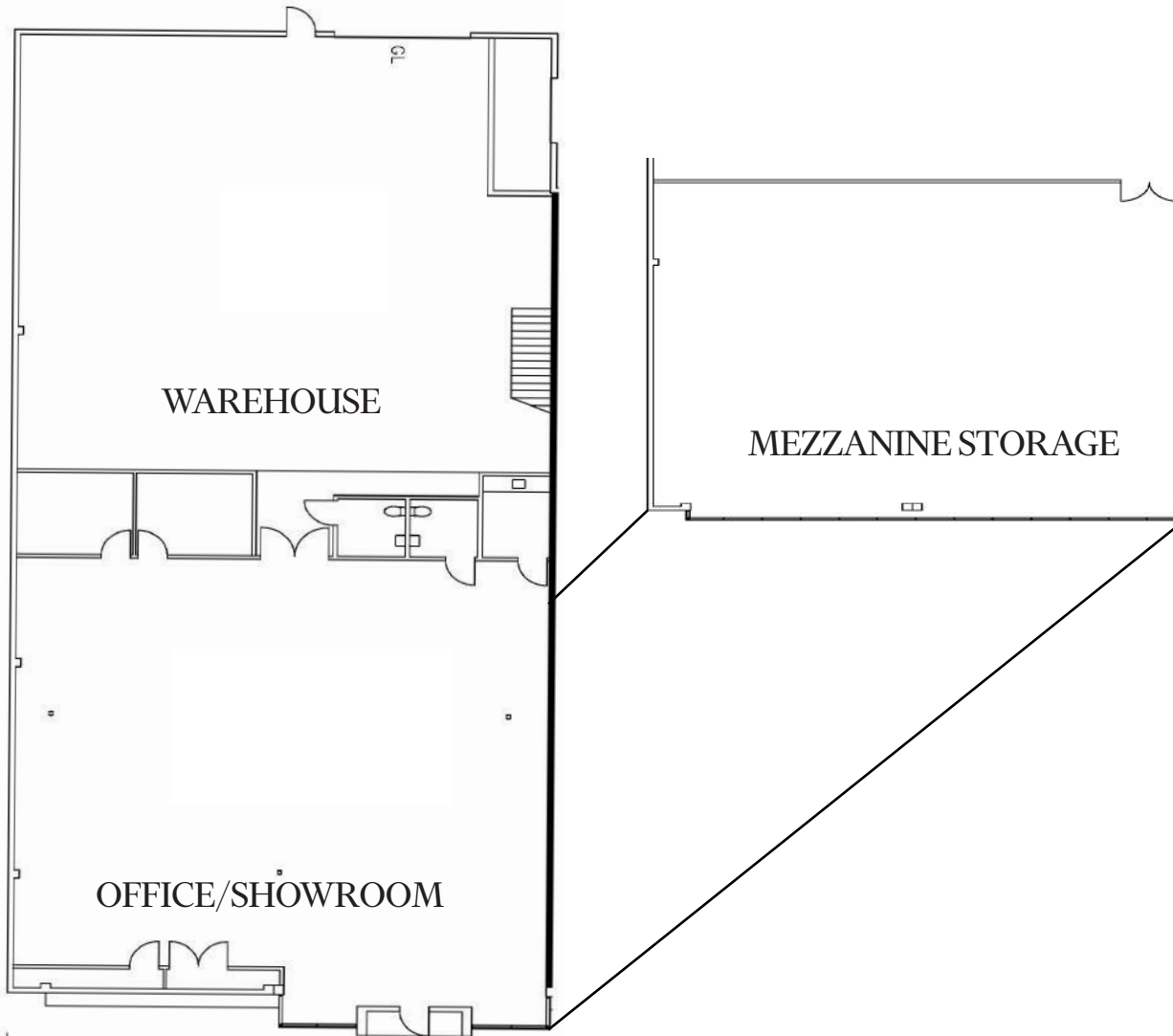


PROPERTY HIGHLIGHTS

- ±7,759 SF Total Square Footage
- ±833 SF of Office
- 22' Minimum clear height
- 1 Dock High Door
- 1 Ground level door
- Fire sprinklered

ONTARIO PACIFIC BUSINESS CENTER

3939 E GUASTI ROAD, STE C • ONTARIO, CA



PROPERTY HIGHLIGHTS

- ±10,491 SF Total Square Footage
- ±3,639 SF of 1st floor office/showroom
- ±3,810 SF of Mezzanine
- 22' Minimum clear height
- 1 Ground level door
- Fire sprinklered
- Freeway Frontage

*Lease Rate Schedule

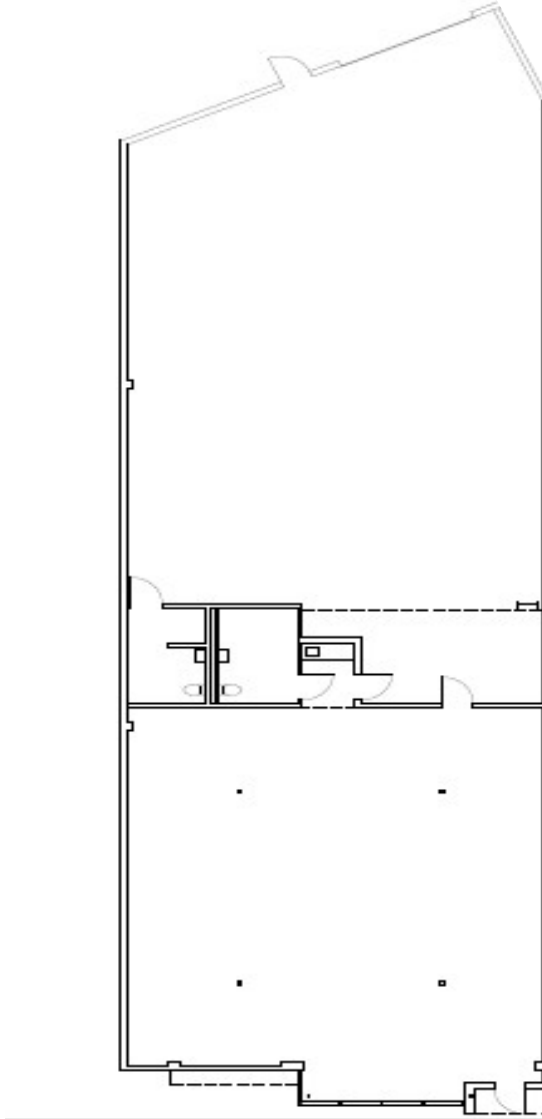
Yr 1-\$0.60 PSF

Yr 2-\$1.20 PSF

Yr 3-\$1.25 PSF

ONTARIO PACIFIC BUSINESS CENTER

3949 E GUASTI ROAD, STE D • ONTARIO, CA



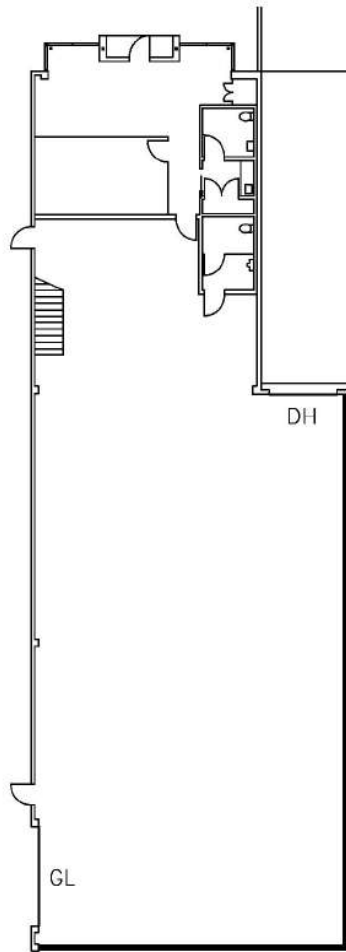
PROPERTY HIGHLIGHTS

- ±5,451 SF Total Square Footage
- ±2,346 SF of Office
- 22' Minimum clear height
- 1 Ground level door
- Fire sprinklered
- Freeway Frontage

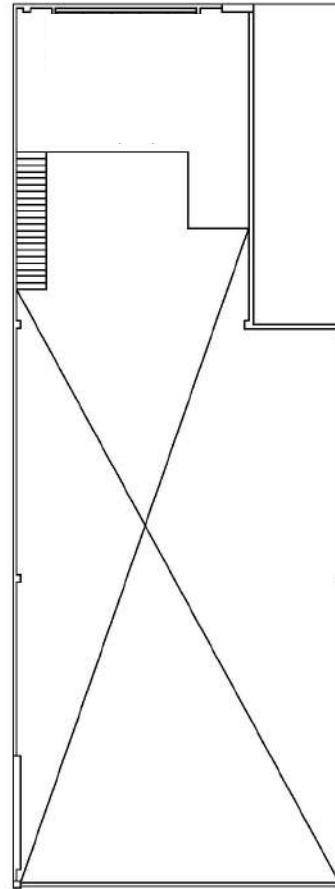
ONTARIO PACIFIC BUSINESS CENTER

3959 E GUASTI ROAD, STE A • ONTARIO, CA

First Floor



Mezzanine



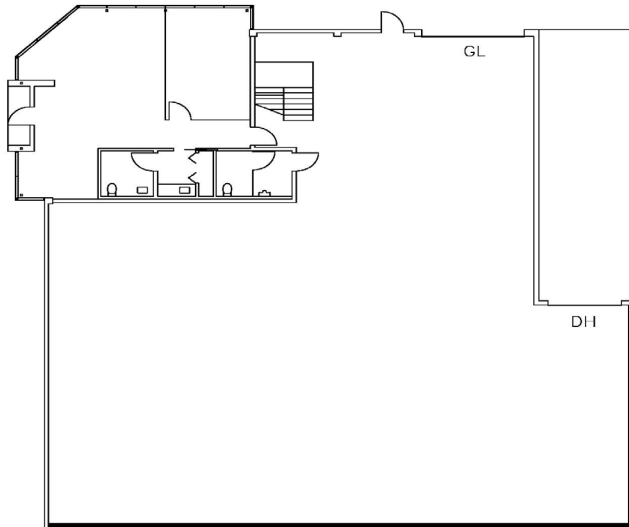
PROPERTY HIGHLIGHTS

- ±6,797 SF Total Square Footage
- ±901 SF of Office
- 22' Minimum clear height
- 1 Dock High Door
- 1 Ground level door
- Fire sprinklered

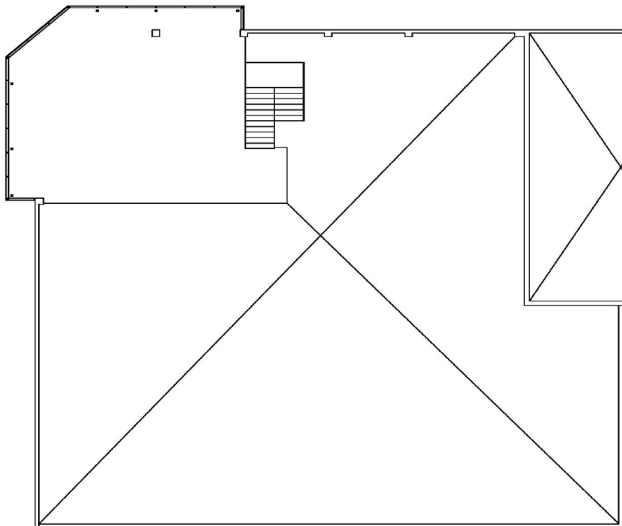
ONTARIO PACIFIC BUSINESS CENTER

3979 E GUASTI ROAD, STE A • ONTARIO, CA

First Floor



Second Floor



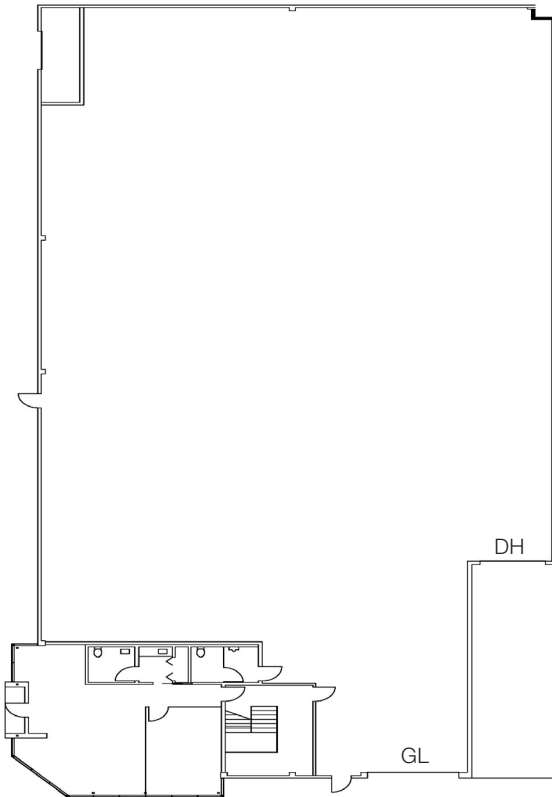
PROPERTY HIGHLIGHTS

- ±8,018 SF Total Square Footage
- ± 1,081 SF of Office
- 22' Minimum clear height
- 1 Ground level door
- 1 Dock High Door
- Fire sprinklered

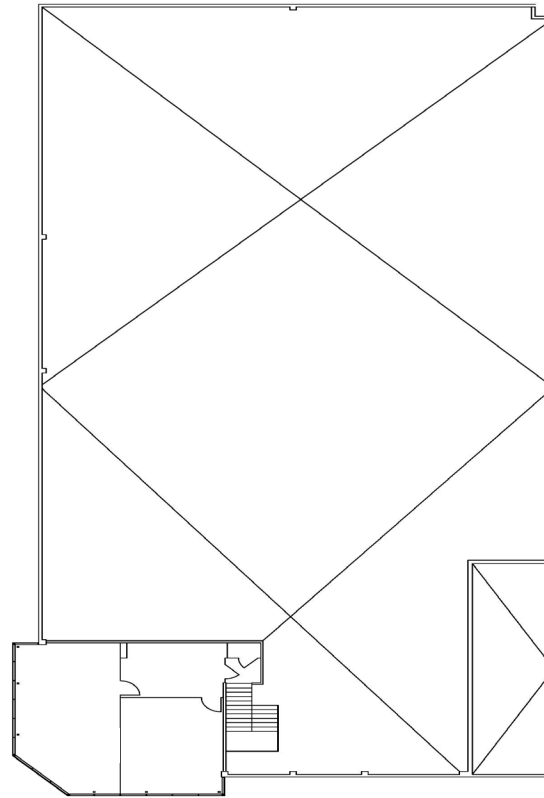
ONTARIO PACIFIC BUSINESS CENTER

3979 E GUASTI ROAD, STE B • ONTARIO, CA

First Floor



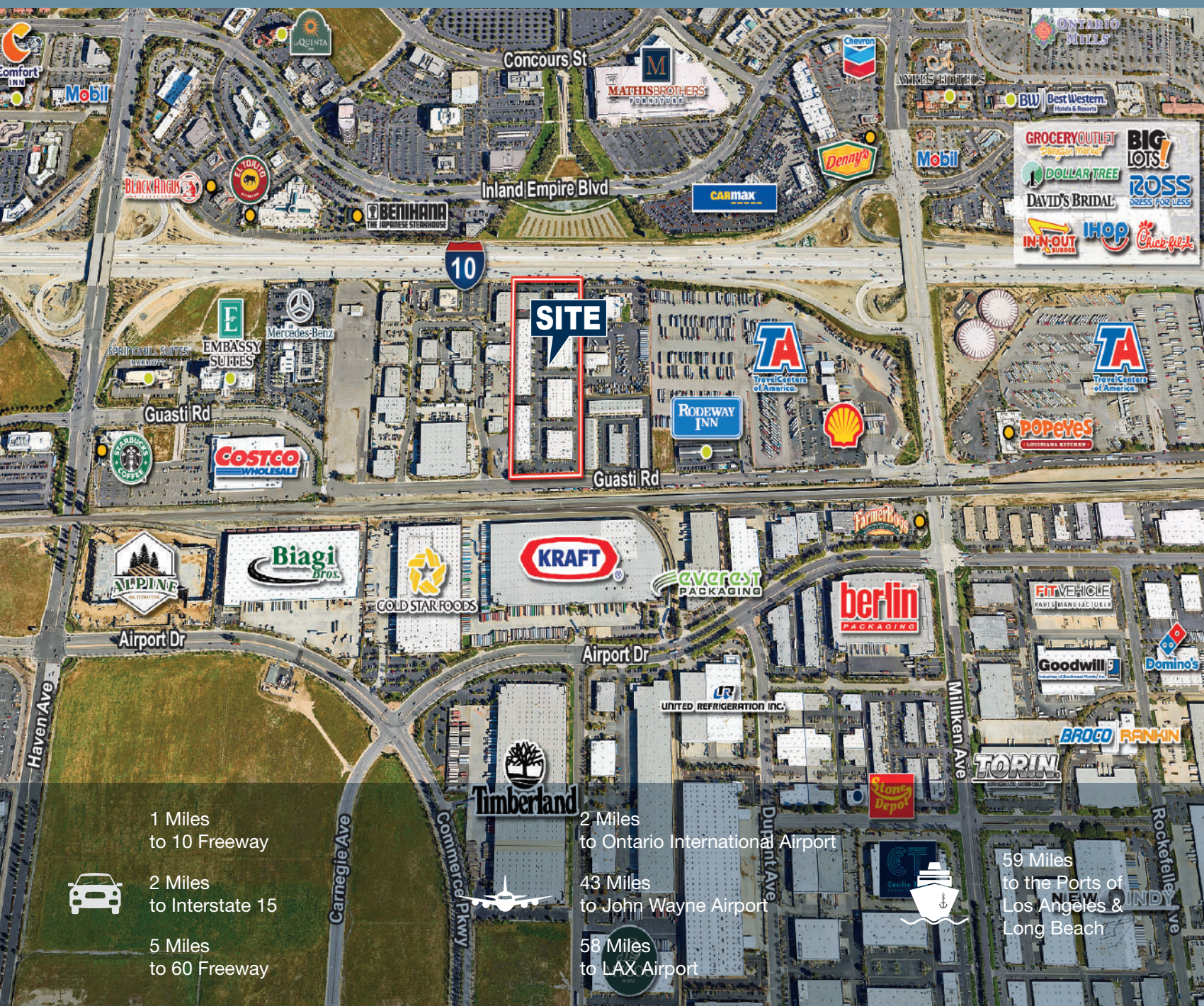
Mezzanine



PROPERTY HIGHLIGHTS

- ±14,200 SF Total Square Footage
- ±1,394 SF of Office
- ±1,185 SF of 2nd Story Office
- 22' Minimum clear height
- 1 Dock high door
- 1 Ground level door
- Fire sprinklered

ONTARIO PACIFIC BUSINESS CENTER



1 Miles
to 10 Freeway

2 Miles
to Interstate 15

5 Miles
to 60 Freeway



2 Miles
to Ontario International Airport

43 Miles
to John Wayne Airport

58 Miles
to LAX Airport



59 Miles
to the Ports of
Los Angeles &
Long Beach



RYAN MOORE, SIOR
Executive Vice President, Partner
rmoore@voitco.com
909.545.8011
Lic. #01821438

RYAN SHATTUCK
Associate
rshattuck@voitco.com
909.545.8013
Lic. #02228315

DYLAN SHERSHENOVICH
Associate
dshershenovich@voitco.com
714.935.2312
Lic. #02151453

Voit
REAL ESTATE SERVICES

2400 E. Katella Avenue, Suite 750
Anaheim, CA 92806
714.978.7880 | 714.978.9431 Fax
Lic #01991785 | www.voitco.com

Licensed as Real Estate Salespersons by the DRE. The information contained herein has been obtained from sources we deem reliable. While we have no reason to doubt its accuracy, we do not guarantee it. ©2026 Voit Real Estate Services, Inc. All Rights Reserved. Lic. #01991785