

8 King

Street East

PREMIER BOUTIQUE BUILDING
IN THE FINANCIAL CORE

INTRODUCING
**THE NEW WAVE
OF RSG SUITES**





Building Features

Located in Toronto's financial core, 8 King St. East boasts historical and architectural beauty and access to amenities such as shopping, hotels, restaurants, cafes, fitness centers, and the underground PATH. Recently renovated in 2021, 8 King has all new energy efficient windows, lobby retrofit, facade restoration, and expanding area amenities.



STEPS TO
THE PATH & TTC



CERTIFICATIONS
(BOMA SILVER, FITWELL)



AMENITY
DENSE AREA



RECENT
RENOVATIONS



**READY
SET GO**

“Ready Set Go” or “RSG” means the space is ready to move into. The suite is built out, furnished, and WIFI enabled. Look-out for these symbols to know if a space is “RSG”.

Overview

Year Built	1915 (Renovated 2021)
Landlord	KingSett Capital Managed by BGO Properties
Size Range	From 603 Sq. Ft. to 7,742 Sq. Ft.
Net Rent	Call to discuss Now Sub-\$60 Gross!
Additional Rent	\$30.90 total (2026 est)



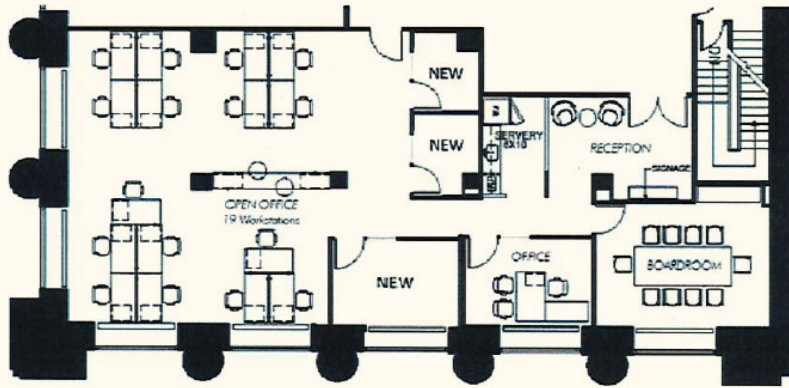
Availabilities

Suite 100	2,363 SF
Suite 208	2,622 SF
Suite 500	2,443 SF
Suite 705	603 SF
Suite 810	1,761 SF
Suite 1100	4,931 SF
Suite 1110	811 SF
Suite 1305	2,596 SF

Suite 1400	7,648 SF
Suite 1500	2,340 SF
Suite 1507	2,205 SF
Suite 1600	7,667 SF
Suite 1802	3,302 SF

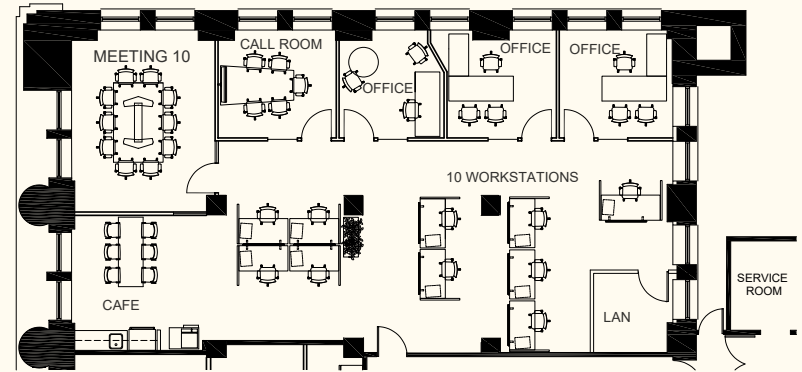
Suite 100

2,363 SF | JUNE 1, 2026 **READY SET GO**



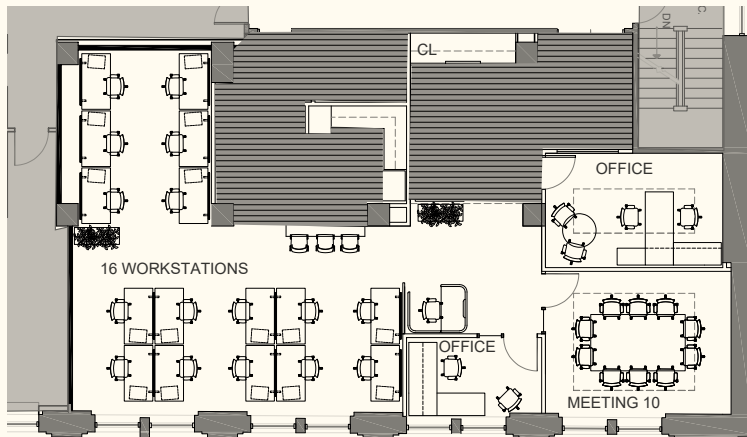
Suite 208

2,622 SF | NOW **READY SET GO**



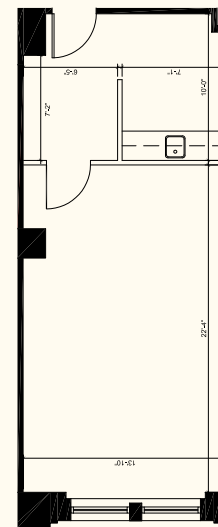
Suite 500

2,443 SF | NOW **READY SET GO**



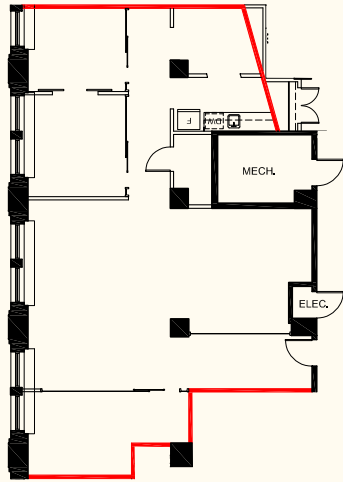
Suite 705

603 SF | NOW **READY SET GO**



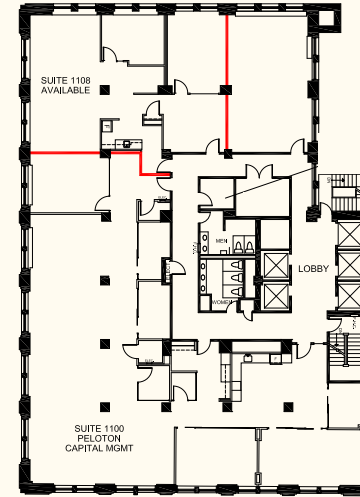
Suite 810

1,761 SF | JULY 2026



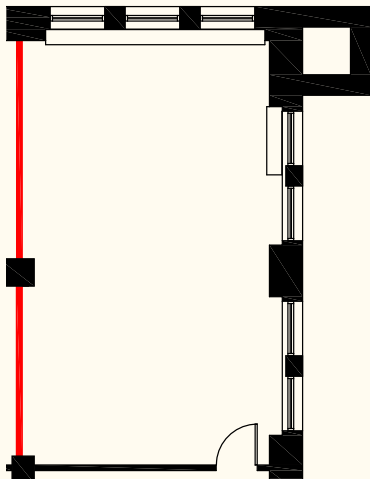
Suite 1100

4,931 SF | Q4 2026 **READY SET GO**



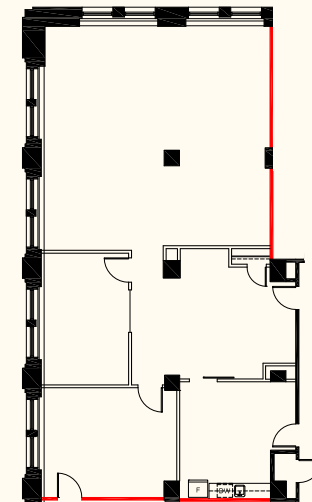
Suite 1110

811 SF | Q4 2026 **READY SET GO**




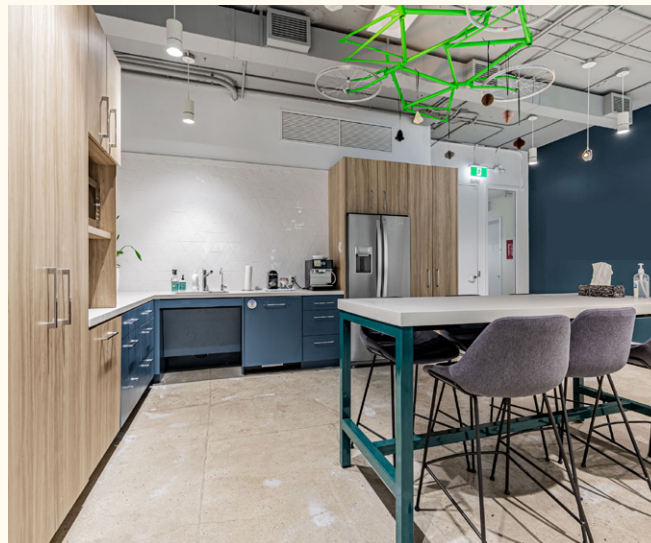
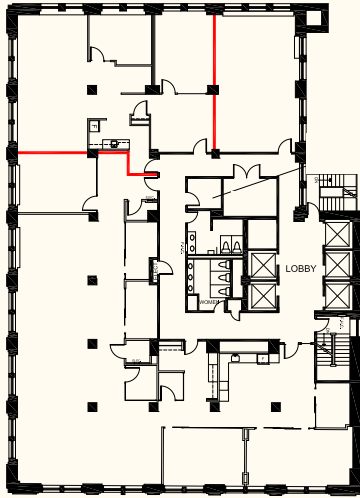
Suite 1305

2,596 SF | NOW **READY SET GO**




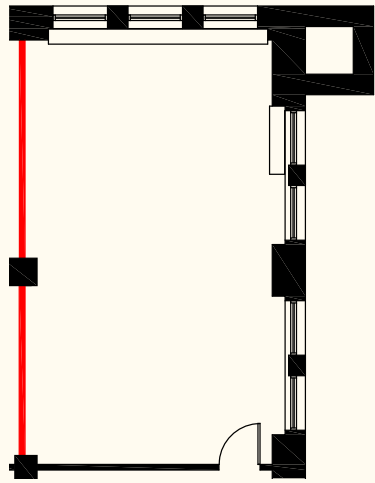
Suite 1100

4,931 SF | Q4 2026  **READY SET GO**



Suite 1110

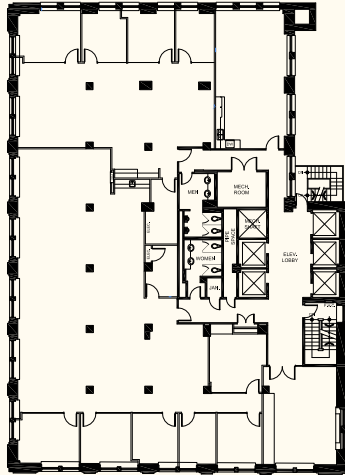
811 SF | Q4 2026 



Suite 1400

7,648 SF | NOW

Future RSG Suite

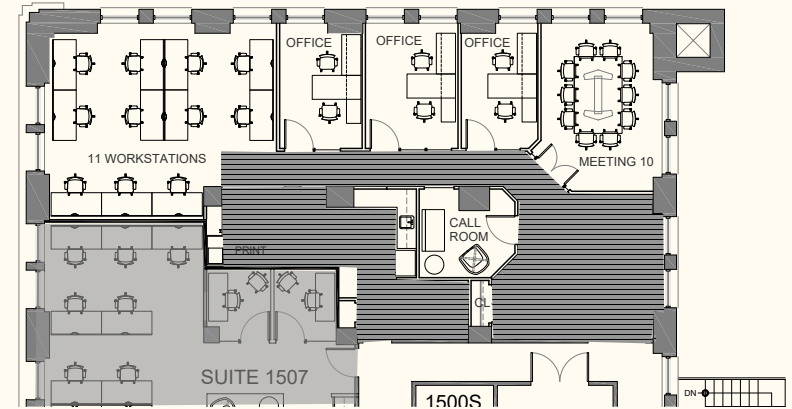


Suite 1500

1,611 SF | Q2 2026



Future RSG Suite

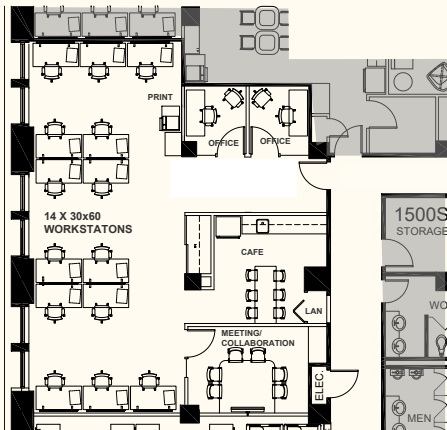


Suite 1507

2,205 SF | Q2 2026



Future RSG Suite

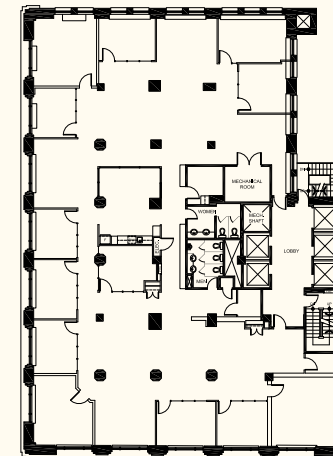


Suite 1600

7,667 SF | NOW

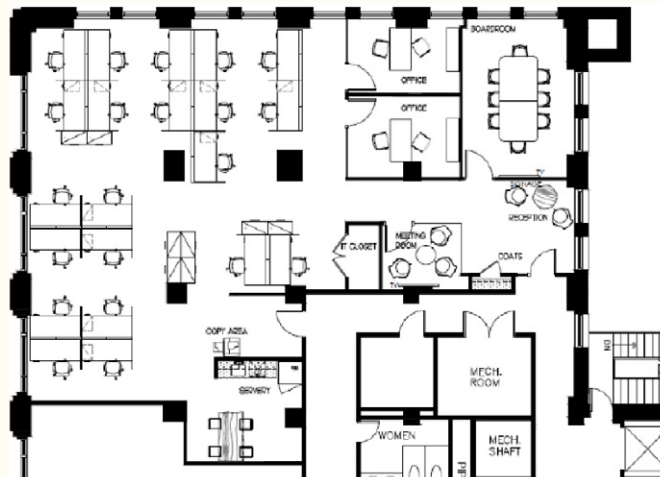


Conceptual Layout | Future RSG Suite



Suite 1802

3,302 SF | JULY 1, 2026  **READY
SET
GO**



8 King Street East

KIRK BAYLIS*

Senior Sales Associate
647 923 9243
kirk.baylis@cbre.com

ELAINE JENKINS*

Vice President
647 550 2375
elaine.jenkins@cbre.com

JEFF FRIEDMAN*

Vice Chairman
416 815 2363
jeff.friedman@cbre.com



*Sales Representative

This disclaimer shall apply to CBRE Limited, Real Estate Brokerage, and to all other divisions of the Corporation; to include all employees and independent contractors ("CBRE"). The information set out herein, including, without limitation, any projections, images, opinions, assumptions and estimates obtained from third parties (the "Information") has not been verified by CBRE, and CBRE does not represent, warrant or guarantee the accuracy, correctness and completeness of the Information. CBRE does not accept or assume any responsibility or liability, direct or consequential, for the Information or the recipient's reliance upon the Information. The recipient of the Information should take such steps as the recipient may deem necessary to verify the Information prior to placing any reliance upon the Information. The Information may change and any property described in the Information may be withdrawn from the market at any time without notice or obligation to the recipient from CBRE. CBRE and the CBRE logo are the service marks of CBRE Limited and/or its affiliated or related companies in other countries. All other marks displayed on this document are the property of their respective owners. All Rights Reserved.