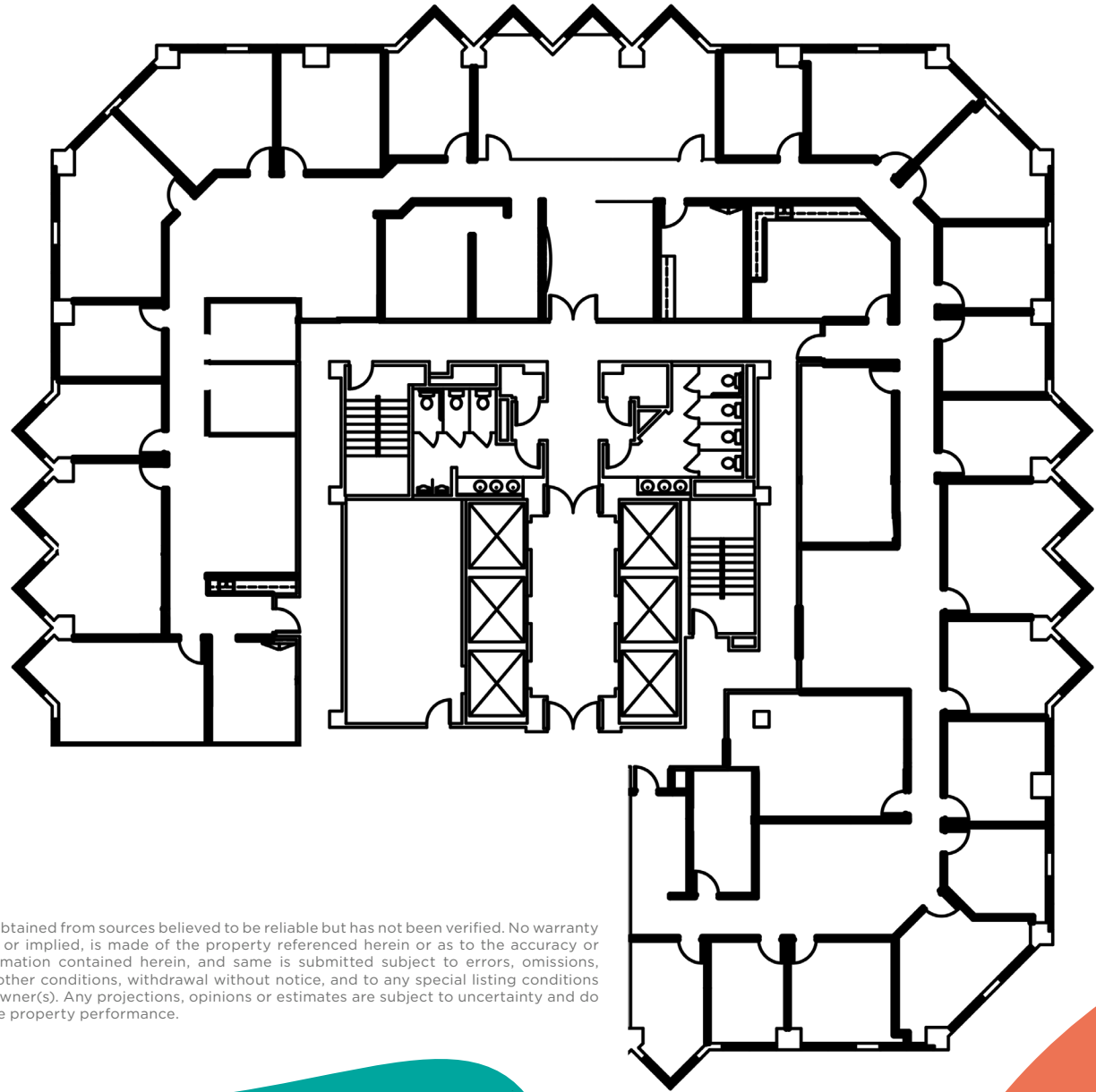




**3800**  
Howard Hughes Parkway

**Suite 500**  
±12,789 RSF



This information has been obtained from sources believed to be reliable but has not been verified. No warranty or representation, express or implied, is made of the property referenced herein or as to the accuracy or completeness of the information contained herein, and same is submitted subject to errors, omissions, change of price, rental or other conditions, withdrawal without notice, and to any special listing conditions imposed by the property owner(s). Any projections, opinions or estimates are subject to uncertainty and do not signify current or future property performance.



**Charles W. Van Geel**  
Director  
+1 702 581 1963  
Charles.VanGeel@cushwake.com  
LIC. #0044616

**HUGHES  
CENTER**