

2 1/2" = 1'-0" CEILING PLAN

INSTALL 2'X2' SUSPENDED ACoustICAL CEILING AND R-30 BATT INSULATION ABOVE ENTIRE CEILING. TYPICAL CEILING HEIGHT TO BE APPROXIMATELY 9'-6" A.F.F., OR AS HIGH AS POSSIBLE.

- LIGHT FIXTURE INDEX:**
- FL 2'X2' RECESSED FLUORESCENT LIGHT WITH PARABOLIC LENSES
 - 6" RECESSED LED
 - 4" ADJUSTABLE RECESSED LED
 - ⊗ DECORATIVE PICTURE (FURNISHED BY TENANT, CONTRACTORS)
 - FL 4" STRIP FLUORESCENT WALL MOUNTED 8'-6" A.F.F.
- CONTROL DEVICES NOTE**
ALL CONTROL DEVICES SHALL BE MOUNTED NO HIGHER THAN 48" A.F.F.
- NOTE:** ALL SWITCHES AND OUTLETS SHALL BE SELECTED BY TENANT. COLORS SHALL BE SELECTED BY TENANT.

CEILING NOTE

- GRID TO BE 2'X2' "ARMSTRONG" PRELUDE 15/16" OR EQUAL. CLG TILE CONTRACTOR RESPONSIBLE FOR PROVIDING A STABLE SYSTEM TO SUPPORT ALL CLG FIXTURES. GRID MUST RUN WITH 4' LENGTH, FRONT TO BACK. PROVIDED SEISMIC BRACINGS AS REQUIRED BY LOCAL CODES, SEE DETAIL 3&4/12.

- SUPPLY AND INSTALL FIBERGLASS INSUL. BATTS, R-30 MIN., ABOVE ALL ACoustICAL TILE CEILING, INCLUDING ALL VERTICAL FURR-DOWN/TRANSITION WALL BETWEEN LOW AND HIGH CEILING. TYPICAL.

- CEILING SYSTEM SHALL BE UL APPROVED CLASS A ONE HR FIRE RATED.

- CEILING TILE TO BE "ARMSTRONG" STANDARD TILE, 2'X2'X5/8" OR OTHER EQUAL ECONOMY TILE, COMPLETE WITH SUSPENDED GRID AND TRIM SYSTEM. COLOR OF GRID AND TILE TO BE "WHITE".

H.V.A.C. TENANT REQUIREMENTS

H.V.A.C. SYSTEMS NOT SHOWN. ALL H.V.A.C. WORK SHALL BE FURNISHED AND INSTALLED AS "DESIGN-BUILT" PER TENANT'S REQUIREMENTS. CONTRACTOR SHALL INCLUDE ALL REQUIRED ENGINEERED DESIGN AND DRAWINGS, AND BID BASE ON THE ENGINEERS DESIGN.

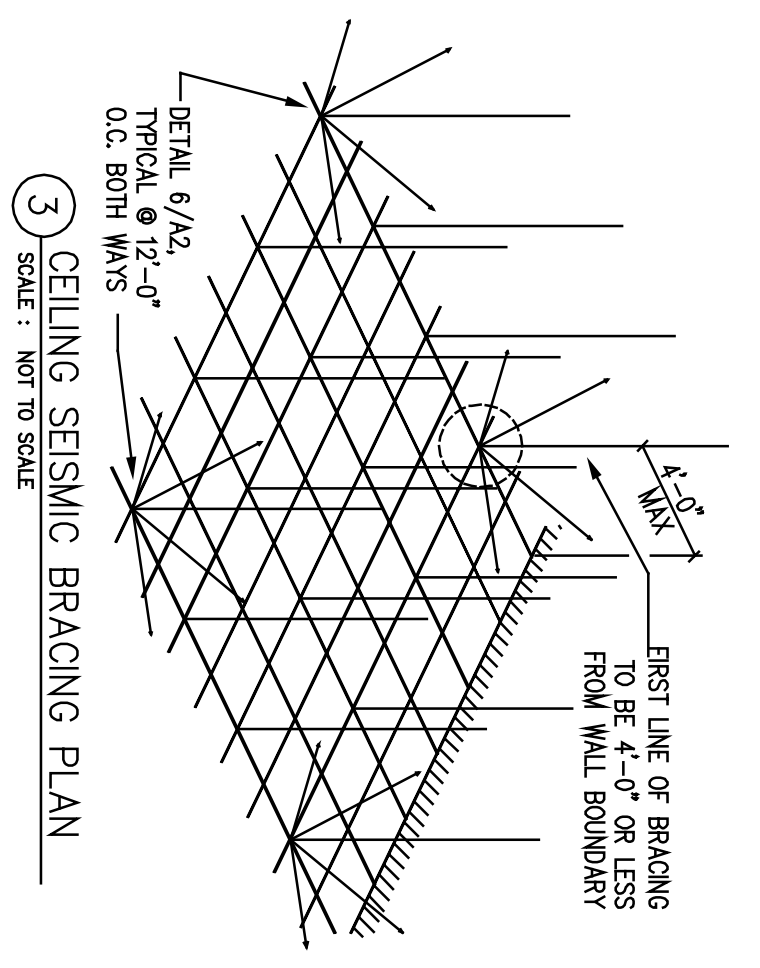
NOTE: MECHANICAL, PLUMBING AND ELECTRICAL SUB-CONTRACTORS SHALL BID THIS PROJECT AS "DESIGN-BUILT", WHICH SHALL INCLUDE PROVIDING OWNER/TENANT WITH SIGNED & SEALED ENGINEERS DESIGN AND DRAWINGS REQUIRED FOR PERMITTING AND CONSTRUCTION. CONTRACTOR TO VERIFY ALL OUTLETS AND DATA/PHONE LOCATIONS WITH TENANT PRIOR TO ROUGH INS.

SPRINKLER (PER LOCAL CODE)

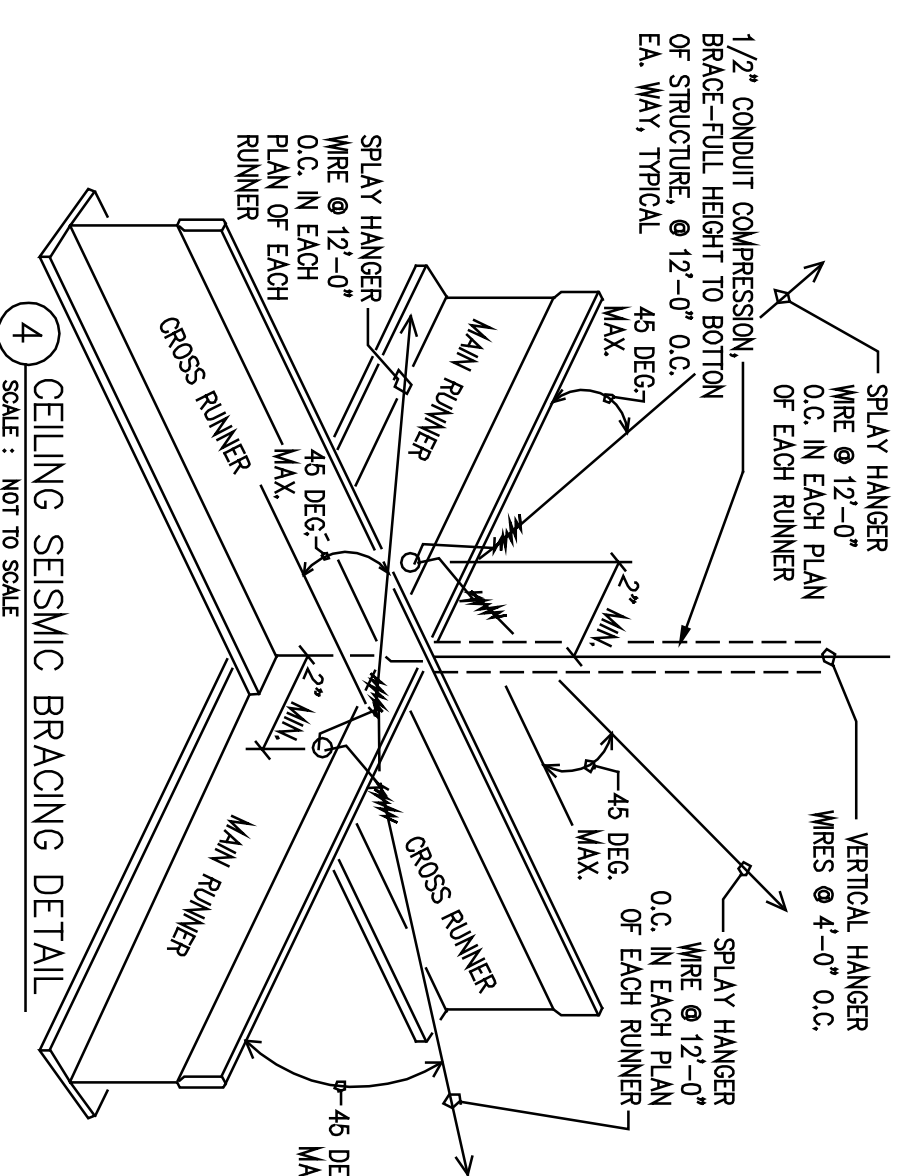
* EXISTING SPRINKLER SYSTEM (VERIFY) SHALL BE MODIFIED AS REQUIRED TO COORDINATE WITH THIS REFLECTED CEILING PLAN AND COORDINATE WITH MECHANICAL AND ELECTRICAL WORK. DO NOT RELOCATE LIGHTS OR DIFFUSERS IN FAVOR OF A SPRINKLER HEAD. ANY SYSTEM MODIFICATIONS ARE TO BE PERFORMED BY AN APPROVED SPRINKLER CONTRACTOR, IN COMPLIANCE WITH NFPA 13 REGULATIONS AND THE LATEST GUIDELINES AND RECOMMENDATIONS OF LANDLORD'S INSURANCE UNDERWRITER, AND BY LOCAL FIRE MARSHALL. SUCCESSFUL SPRINKLER CONTRACTOR SHALL PROVIDE ENGINEERS SIGNED AND SEALED SPRINKLER DESIGN DRAWINGS AND CALCULATIONS REQUIRED BY STATE & LOCAL CODE REGULATIONS/REQUIREMENTS FOR PERMITTING AT NO ADDITIONAL COST TO TENANT OR LANDLORD.

* SPRINKLER HEADS SHALL BE WHITE, SEMI-RECESSED IN GYP BOARD CEILINGS. COORDINATE SYSTEM SHUT-DOWNS W/ CENTER LANDLORD. SPRINKLER CONTRACTOR TO PAY ANY SHUT-DOWN FEES.

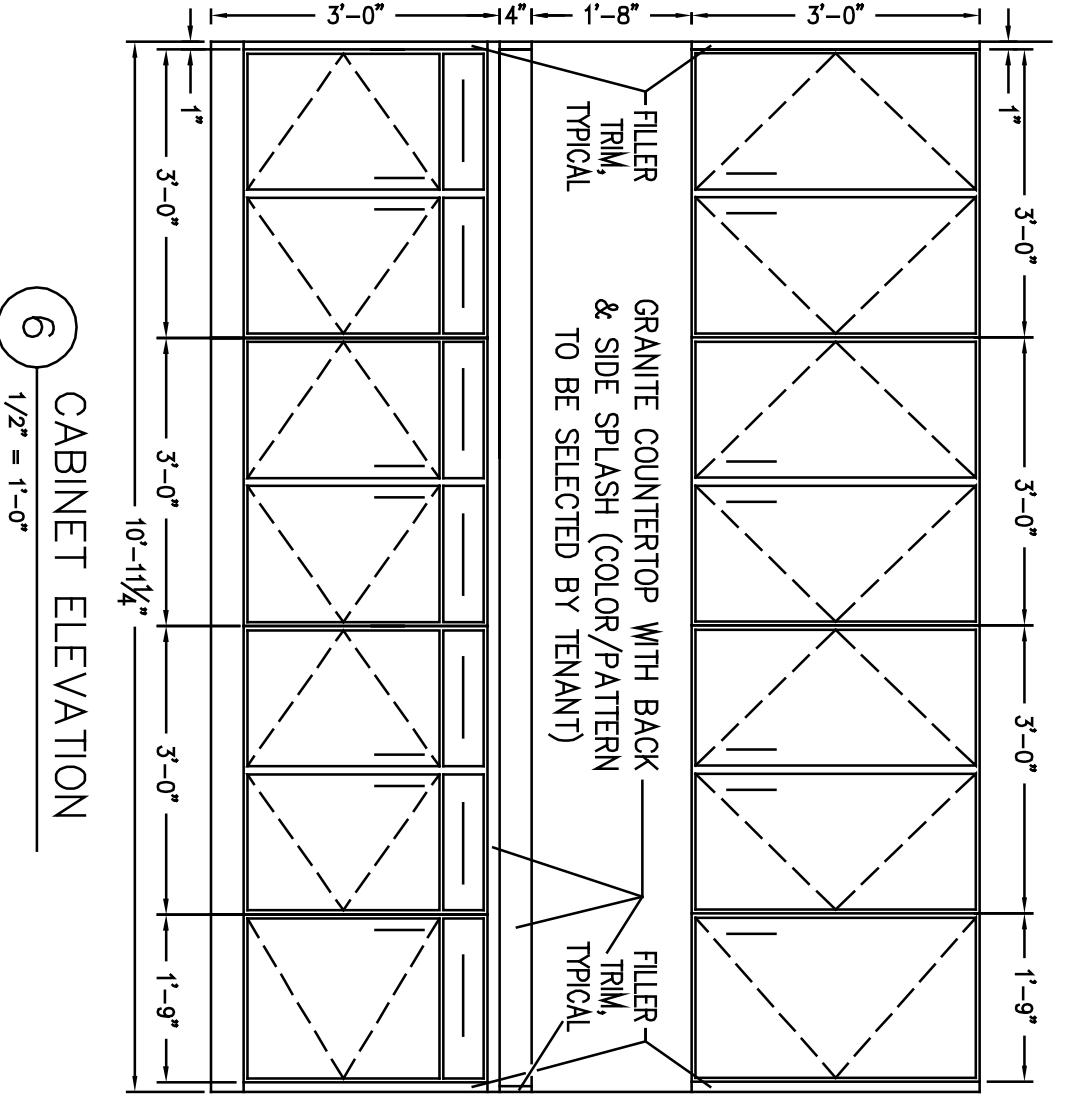
* ANY REUSED EQUIPMENT SHALL MEET CURRENT CODE OR BE BROUGHT UP TO CODE. SPRINKLER CONTRACTOR SHALL VERIFY THIS INFORMATION PRIOR TO SUBMITTING BID. ITEMIZE CODE WORK.



3) CEILING SEISMIC BRACING PLAN
SCALE: NOT TO SCALE

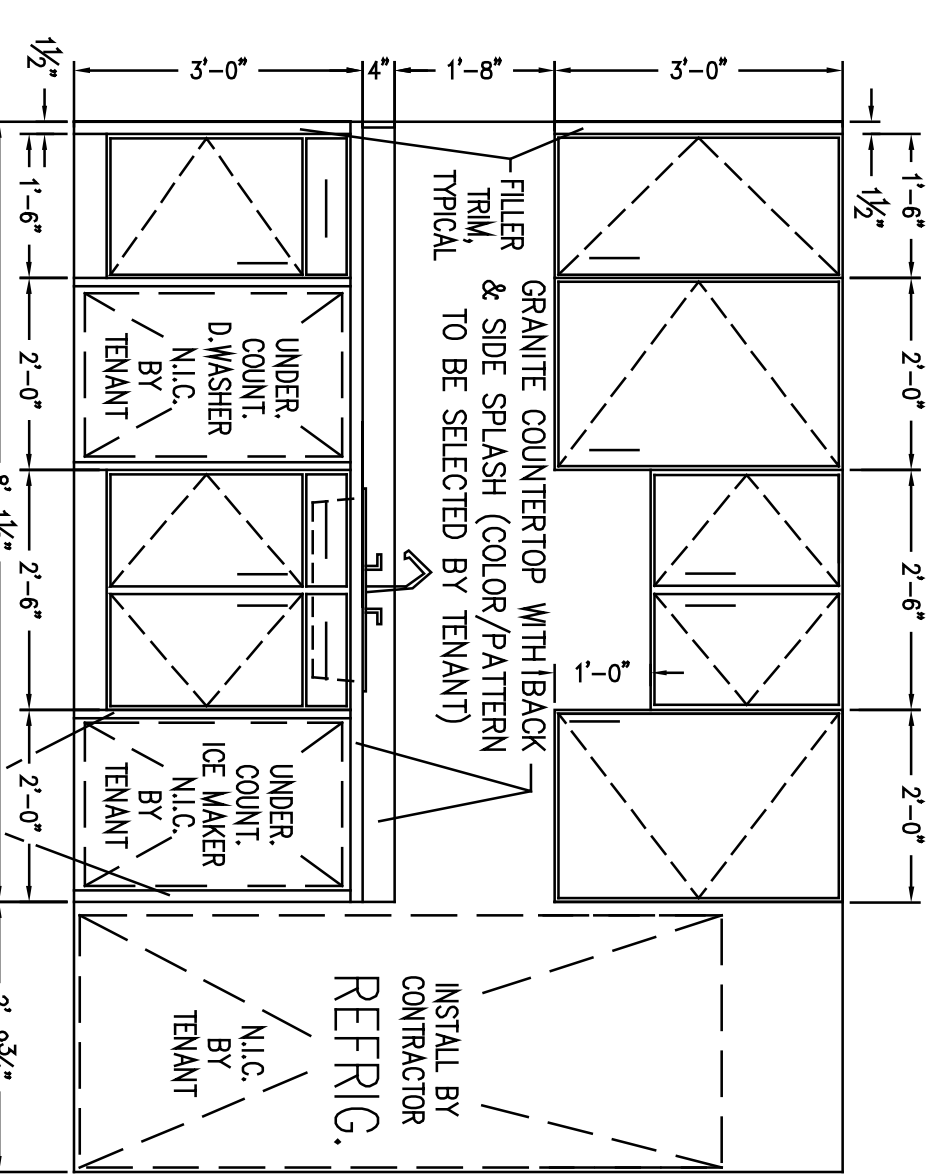


4) CEILING SEISMIC BRACING DETAIL
SCALE: NOT TO SCALE



6 1/2" = 1'-0" CABINET ELEVATION

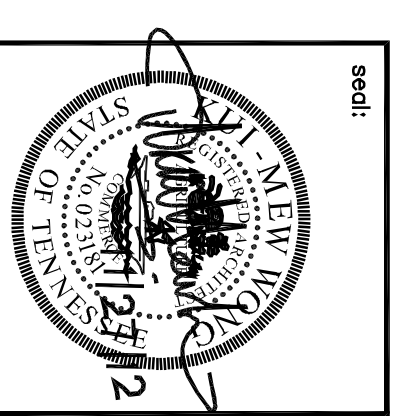
NOTE: KITCHEN CABINETS SHALL BE STANDARD GRADE CABINET, PAINTED. PROVIDE ALTERNATE PRICE FOR USING PREPARED INSTANT GRADE CABINETS. PROVIDE SAMPLES BROCHURES FOR TENANT'S SELECTION.



7 1/2" = 1'-0" CABINET ELEVATION

NOTE: ALL APPLIANCES ARE FURNISHED BY TENANT. INSTALL BY CONTRACTORS. CONTRACTORS SHALL VERIFY ALL EQUIPMENTS SIZES, ELECTRICAL AND PLUMBING REQUIREMENTS.

sheet title: CEILING PLAN AND DETAILS



tenant finish-out for

M6 CAPITAL GROUP

9047 Poplar Avenue, Suite 109
Germantown, TN 38138

AT
STONE CREEK CENTER

STRONGER. LANDSCAPE ARCHITECTS, LLC.
phone: 931-681-1000

ARCHITECTWON INTERNATIONAL, LLC.
9033 Garden Arbor Dr., Germantown, TN, 38138, USA
phone: 901-340-3979 ~ email: info@architectwonn.com

date: 12.27.2012
revisions:

sheet: **A2**