

DEVELOPMENT OPPORTUNITY

1.68 ACRES FOR SALE



PROPERTY DESCRIPTION

Exceptional ±1.68 acre development opportunity located just off East Plaza Street / NC Highway 150 in the heart of Mooresville's thriving commercial corridor. Zoned Community Commercial (CC), the property supports a wide range of retail, service, and commercial uses. Surrounded by established restaurants, national retailers, and growing residential communities, this site offers outstanding visibility and accessibility in a high-demand area.

A concept plan has already been approved under the Mooresville UDO for a 3-story ±60,000 SF self-storage facility, providing a streamlined path to development. Extensive due diligence has been completed, including assessments, surveys, site plans, and regulatory reports. Flexible deal structure available - owner will consider sale, joint venture, or owner financing.

OFFERING SUMMARY

Sale Price:	\$805,000
Lot Size:	1.68 Acres

DEMOGRAPHICS	1 MILE	3 MILES	5 MILES
Total Households	1,853	14,720	29,697
Total Population	4,729	37,748	77,057
Average HH Income	\$80,167	\$96,042	\$115,579

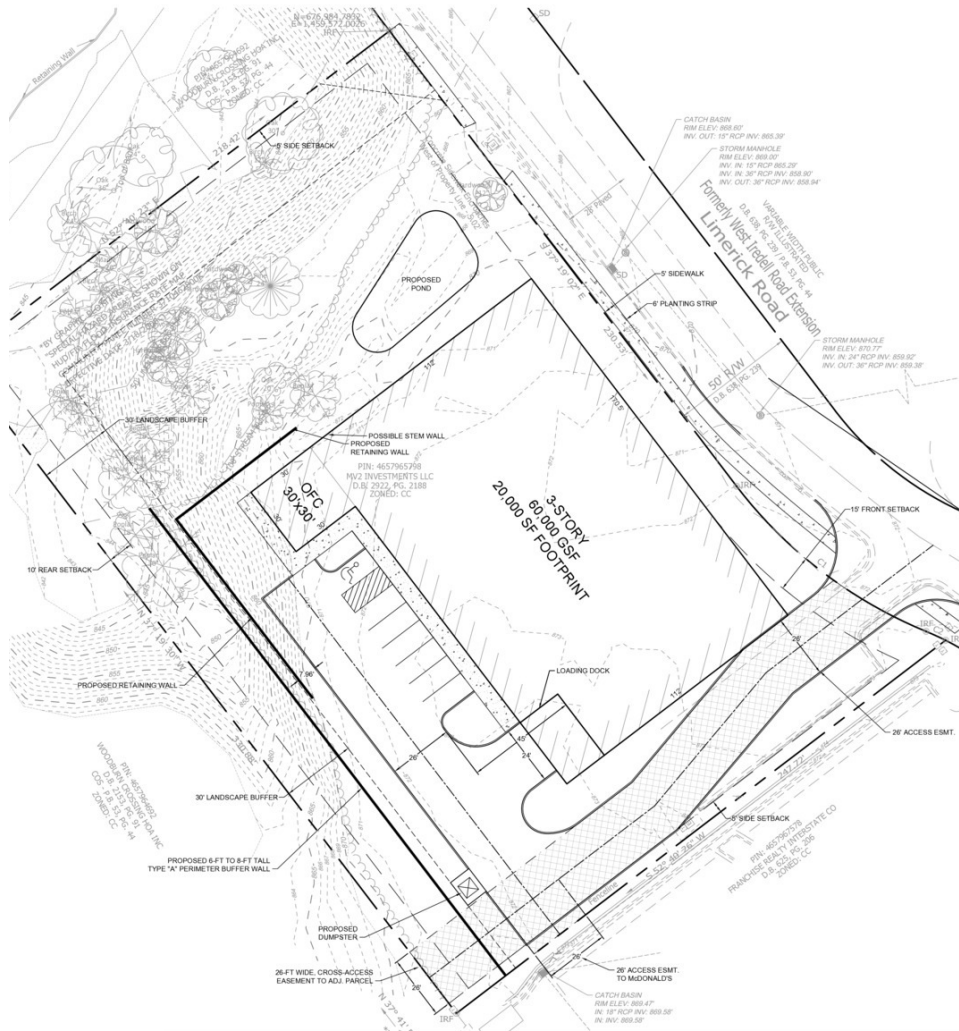
Nick Gonzalez

336.724.1715
nick@ltpcommercial.com

Linville | Team Partners
COMMERCIAL REAL ESTATE

DEVELOPMENT OPPORTUNITY

1.68 ACRES FOR SALE



PROPOSED SITE PLAN

Property Type	Self Storage
Total Size	±60,000 SF
Size Per Floor	±20,000 SF
Office Space	±900 SF
Floors	3
Loading Dock	1

EXAMPLES OF ALLOWABLE USES

- Daycare/School
- Special Purpose
- Urgent Care
- Veterinary
- Bank or Office
- Brewery/Restaurant
- Automotive
- Self Storage & Small Bay Storage

Nick Gonzalez

336.724.1715

nick@ltpcommercial.com

Linville | Team Partners

COMMERCIAL REAL ESTATE

DEVELOPMENT OPPORTUNITY

1.68 ACRES FOR SALE



Representative Rendering



Representative Rendering

Nick Gonzalez

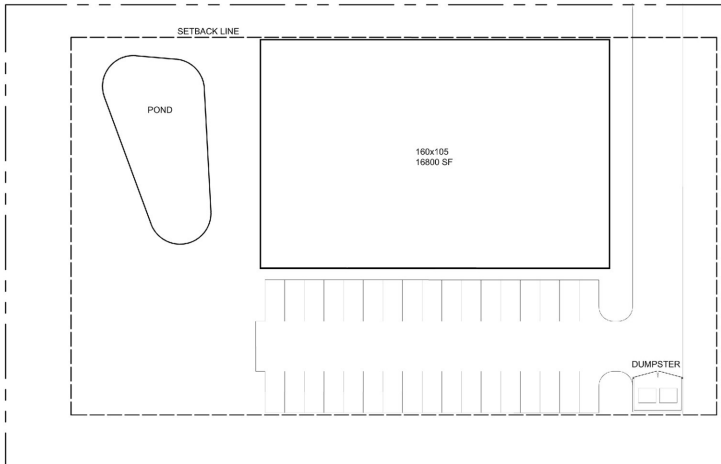
336.724.1715

nick@ltpcommercial.com

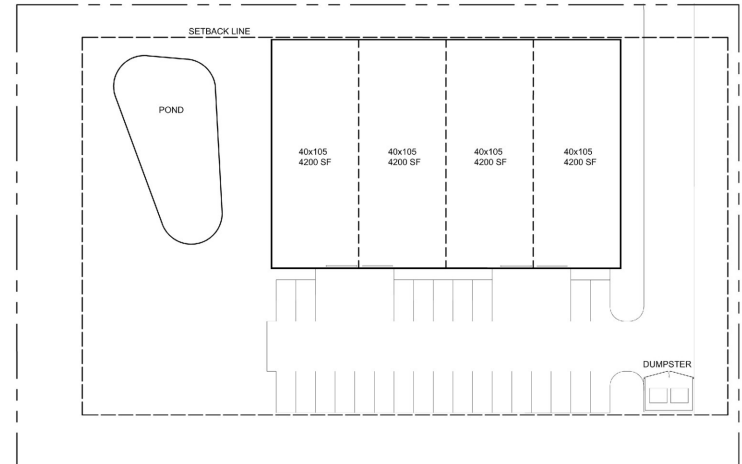
Linville | Team Partners
COMMERCIAL REAL ESTATE

DEVELOPMENT OPPORTUNITY

LAND FOR SALE



Proposed Site Plan - Office/Single Tenant



Proposed Site Plan - Flex/Multi-Tenant



Representative Rendering



Representative Rendering

Nick Gonzalez

336.724.1715

nick@ltpcommercial.com

Linville | Team Partners
COMMERCIAL REAL ESTATE

DEVELOPMENT OPPORTUNITY

1.68 ACRES FOR SALE



Nick Gonzalez

336.724.1715
nick@ltpcommercial.com

Linville | Team Partners
COMMERCIAL REAL ESTATE

DEVELOPMENT OPPORTUNITY

LAND FOR SALE

MOORESVILLE, NORTH CAROLINA

Mooreville is located in the southwestern section of Iredell County, North Carolina, and is a part of the fast-growing Charlotte metropolitan area. The city is the most populous municipality in Iredell County. It is located approximately 25 miles north of Charlotte. Mooreville is the corporate headquarters of Lowe's Companies, Inc., one of the largest home improvement retailers in the world. Lowe's has a significant presence in the town, employing thousands of residents and contributing to the local economy. Mooreville is also known as the home of many NASCAR racing teams and drivers, along with an IndyCar team and its drivers, as well as racing technology suppliers. Mooreville is situated on the shores of Lake Norman, a large man-made lake created by the construction of the Cowans Ford Dam on the Catawba River. Lake Norman offers various recreational activities, including boating, fishing, and water sports, and it attracts many visitors and residents who enjoy its scenic beauty.

DEMOGRAPHICS

Total Population	54,578
8 Year Population Growth	43.24%
Average Household Income	\$101,643

AWARDS & RECOGNITIONS

- # Fastest Growing City in North Carolina (GoBankingRates, 2023)
- #2 Fastest NC County Population Growth (Charlotte Business Journal, 2023)
- #1 Lowest Tax Rate in Charlotte Region (NC Department of Commerce, 2023)
- #2 Fastest Growing Retail Sector in NC (NC Department of Commerce, 2023)
- #1 County for Economic Growth | Charlotte Metro (Charlotte Business Journal, 2023)
- #14 Best Counties to Live in NC (Niche, 2023)



Nick Gonzalez

336.724.1715
nick@ltpcommercial.com

Linville | Team Partners
COMMERCIAL REAL ESTATE

MOORESVILLE, NC

L | T

DEVELOPMENT OPPORTUNITY

1.68 ACRES FOR SALE



Nick Gonzalez

336.724.1715

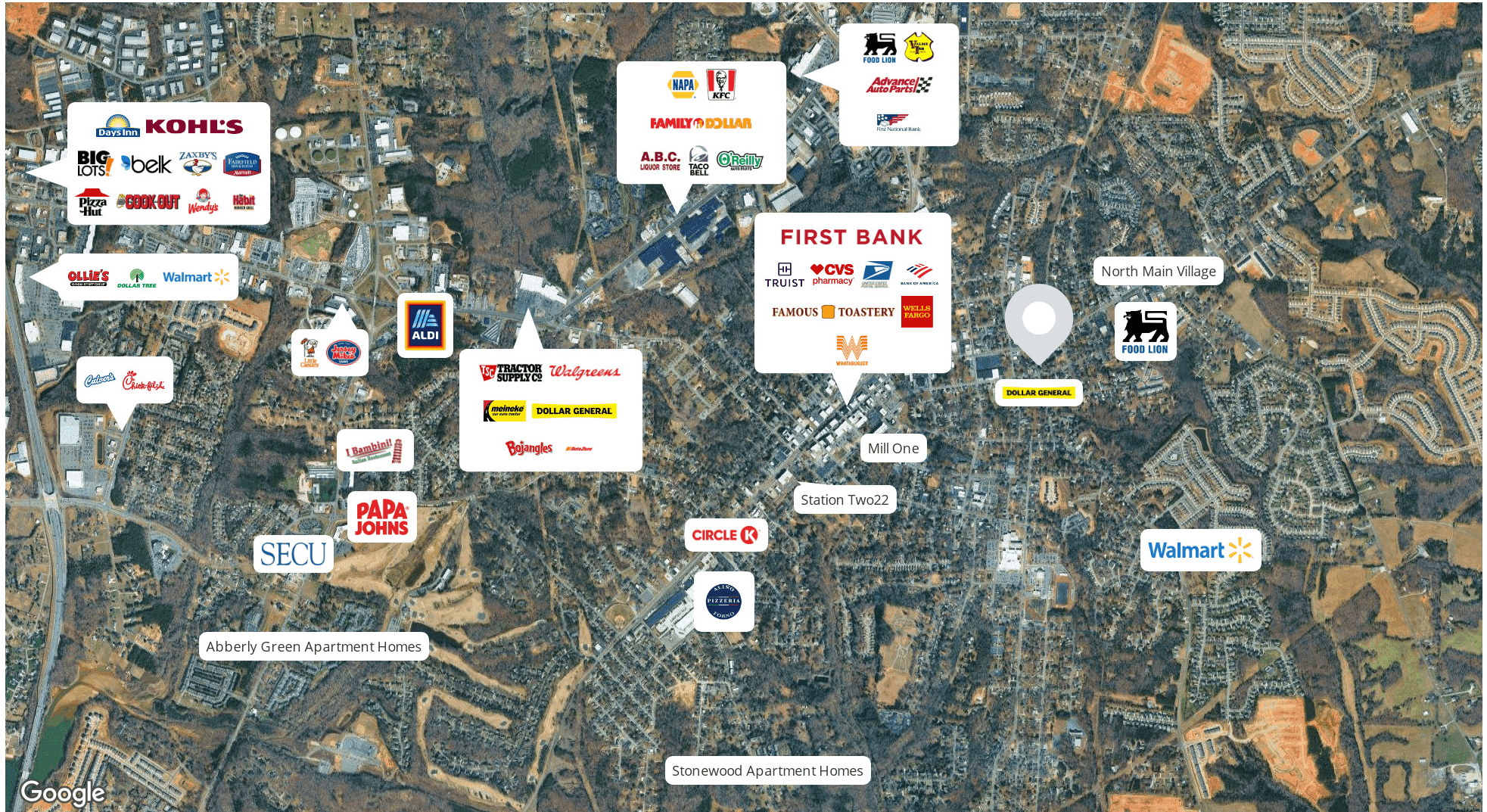
nick@ltpcommercial.com

Linville | Team Partners

COMMERCIAL REAL ESTATE

DEVELOPMENT OPPORTUNITY

1.68 ACRES FOR SALE



Nick Gonzalez
 336.724.1715
 nick@ltpcommercial.com

Linville | Team Partners
 COMMERCIAL REAL ESTATE

DEVELOPMENT OPPORTUNITY

1.68 ACRES FOR SALE



Property Type

Land

Lot Size

1.68 Acres

Exceptional ±1.68 acre development opportunity located just off East Plaza Street / NC Highway 150 in the heart of Mooresville's thriving commercial corridor. Zoned Community Commercial (CC), the property supports a wide range of retail, service, and commercial uses. Surrounded by established restaurants, national retailers, and growing residential communities, this site offers outstanding visibility and accessibility in a high-demand area. A concept plan has already been approved under the Mooresville UDO for a 3-story ±60,000 SF self-storage facility, providing a streamlined path to development. Extensive due diligence has been completed, including assessments, surveys, site plans, and regulatory reports. Saving you time and reducing upfront development risk. Flexible deal structure available - owner will consider sale, joint venture, or owner financing.



Nick Gonzalez

336.724.1715
nick@ltpcommercial.com

Linville | Team Partners
COMMERCIAL REAL ESTATE

DEVELOPMENT OPPORTUNITY

LAND FOR SALE

LOCATION INFORMATION

Street Address 115 Limerick Road

City, State, Zip Mooresville, NC 28115

PROPERTY INFORMATION

Property Type Land

Property Subtype Retail

Property Use Development

Zoning Community Commercial

Lot Size 1.68 Acres



SALE PRICE: \$805,000

Nick Gonzalez

336.724.1715
nick@ltpcommercial.com

The information contained herein has been taken from sources deemed to be reliable. Linville Team Partners makes no representation or warranties, expressed or implied, as to the accuracy of this information. All information in this document is subject to verification prior to purchase or lease.

Linville | Team Partners

COMMERCIAL REAL ESTATE