

For Sale  
St. Mark's Church  
2,949 SF



## St. Mark's Episcopal Church

3120 East 24th Street  
Des Moines, Iowa 50317

### Property Highlights

- 2,949 square feet
- Finished lower level
- Built in 1974
- Potential Redevelopment Site
- 3 Legal Parcels; Total Lot Size: 4.75 acres
- Interstate 235 visibility
- Zoning: P2 - Public, Civic, & Institutional District
- Sold "As-Is"

### Location Description

Located off Interstate 235, south of the East Euclid Avenue exit.  
Neighborhood is a mix of commercial, retail, and residential.

#### OFFERING SUMMARY

Sale Price	\$850,000
Building Size	2,949 SF

#### DEMOGRAPHICS

Stats	Population	Avg. HH Income
1 Mile	6,750	\$74,260
3 Miles	66,036	\$70,124
5 Miles	145,931	\$76,162

For more information

**Kevin Crowley, SIOR**

C: 515 991 7000  
kcrowley@iowarealtycommercial.com

**Doug Pfeil**

C: 515 419 9546  
dpfeil@iowarealtycommercial.com

For Sale

Additional Photos

2,949 SF | \$850,000



For Sale

Additional Photos

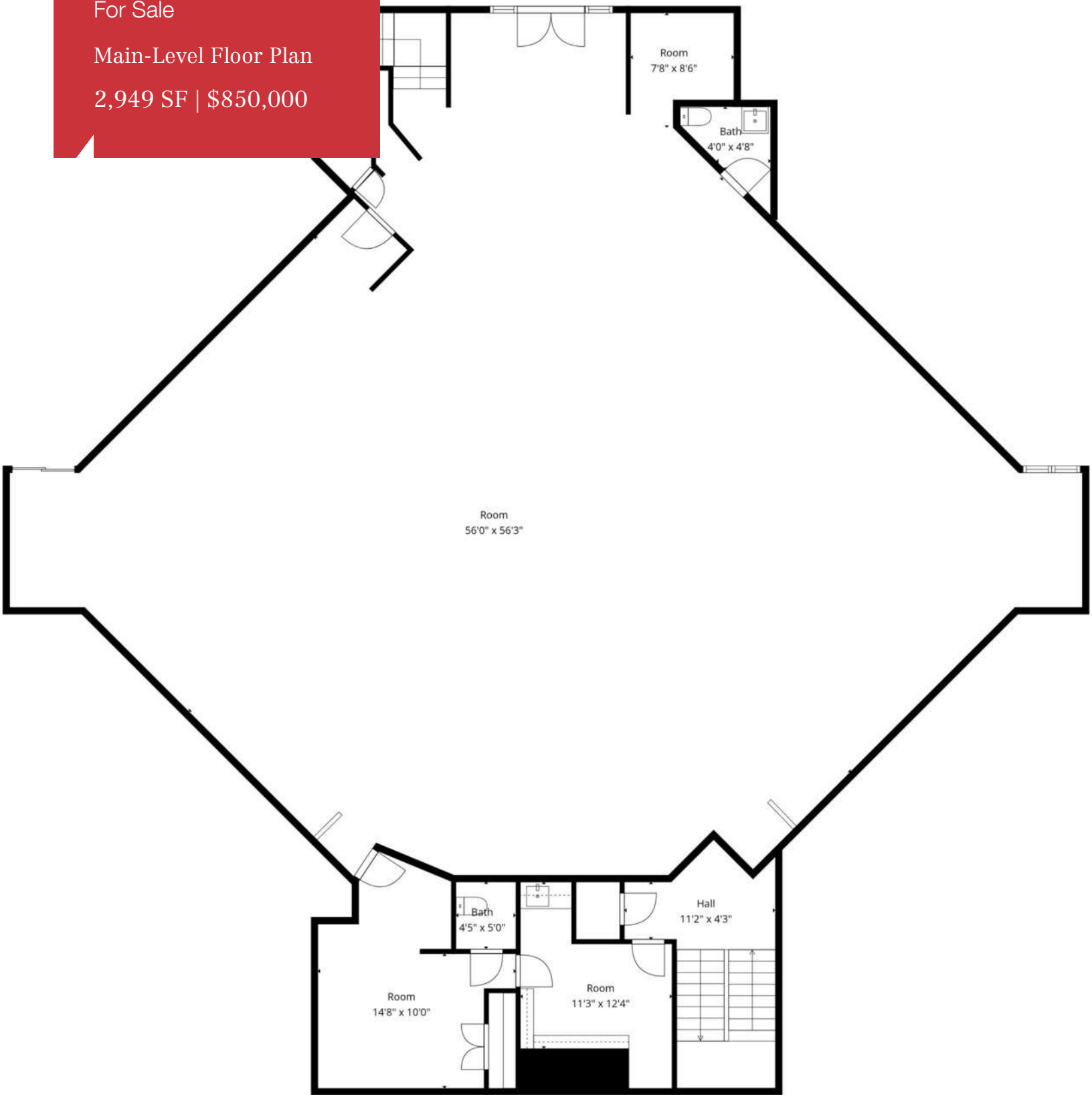
2,949 SF | \$850,000



For Sale

Main-Level Floor Plan

2,949 SF | \$850,000



Measurements Deemed Highly Reliable But Not Guaranteed.

For Sale

Lower-Level Floor Plan

2,949 SF | \$850,000



Measurements Deemed Highly Reliable But Not Guaranteed.

# Location Maps

