



# FOR LEASE

## SUMMERLINN CENTER

1750 BLANKENSHIP ROAD  
WEST LINN, OR 97068

+/-1,237-3,812 RSF

RATE: \$35-37/SF

JOSH BEAN, SIOR  
josh@ecacre.com

BRIAN HANSON, MREF  
brian@ecacre.com

503.205.0610



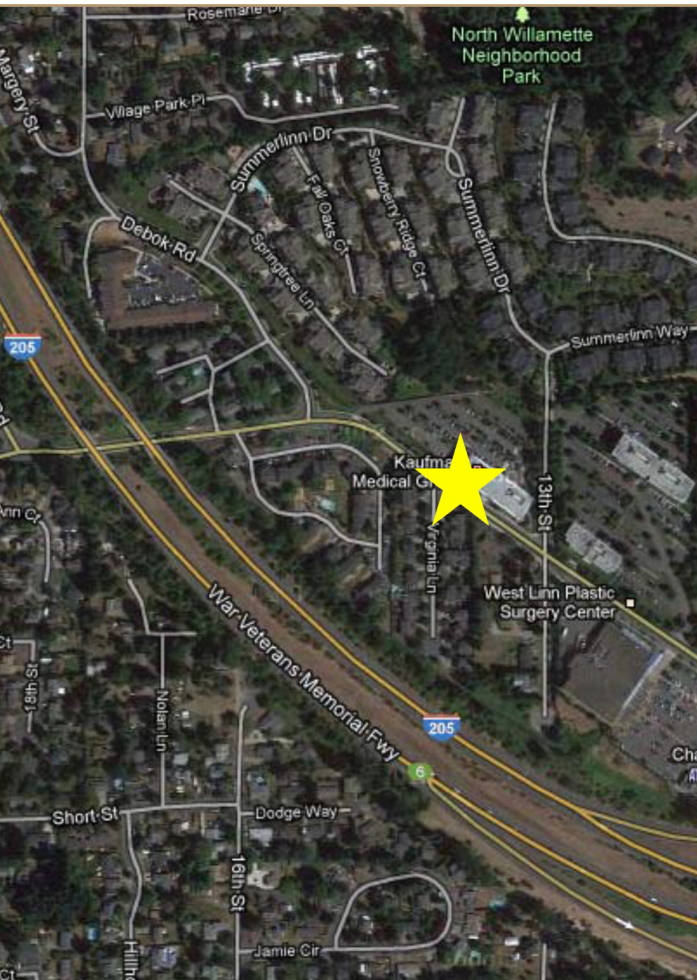
ETHOS COMMERCIAL ADVISORS LLC | 1111 NE FLANDERS ST, SUITE 201 | PORTLAND, OR 97232

These marketing materials do not constitute an offer to sell or lease, and do not constitute or contain promises, representations or warranties of any kind. The information in these marketing materials may contain approximations and images for illustration purposes. The owner, broker and their agents assume no risk or liability for inaccuracies, errors or omissions in these marketing materials. The terms and conditions of any transaction with respect to the property shall be contained exclusively in a written purchase and sale agreement or lease between the owner and the purchaser or tenant. Prospective purchasers or tenants should perform their own inspections of the property to verify its condition, permitted uses, and all other characteristics. | © 2025 Ethos Commercial Advisors LLC. All Rights Reserved. | 5.29.25

LICENSED IN OREGON, WASHINGTON, AND TEXAS

# FEATURES

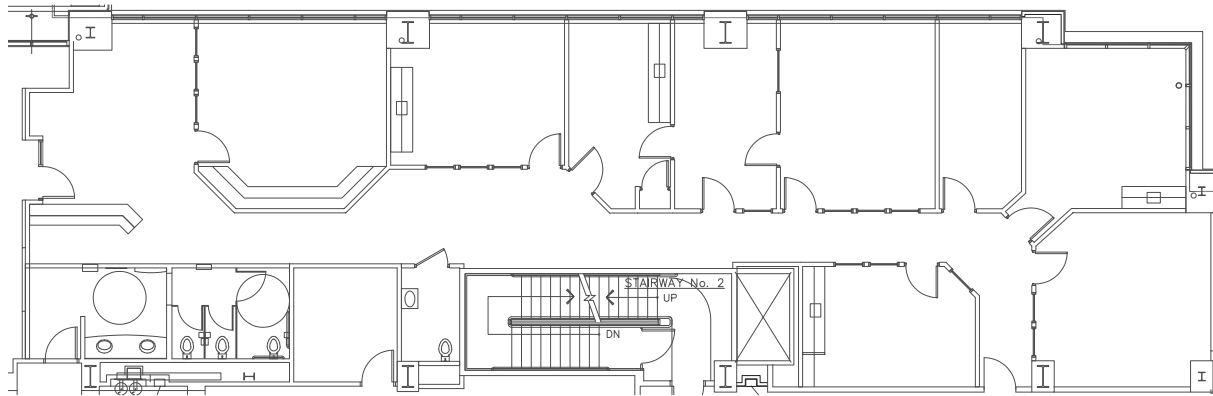
- Shared conference facility with video conferencing and voice-over IP capabilities
- Common area building showers
- Broadband fiber optics
- Approximately 4/1,000 SF parking ratio
- Numerous restaurants and other retail amenities in close proximity



# SUITE 200

+/-2,000-3,812 RSF

- Ground floor suite
- Main lobby exposure
- Corner suite
- Private restroom



THESE DRAWINGS ARE NOT TO SCALE AND ARE FOR ILLUSTRATIVE PURPOSES ONLY

SUITE PHOTOS  
COMING SOON

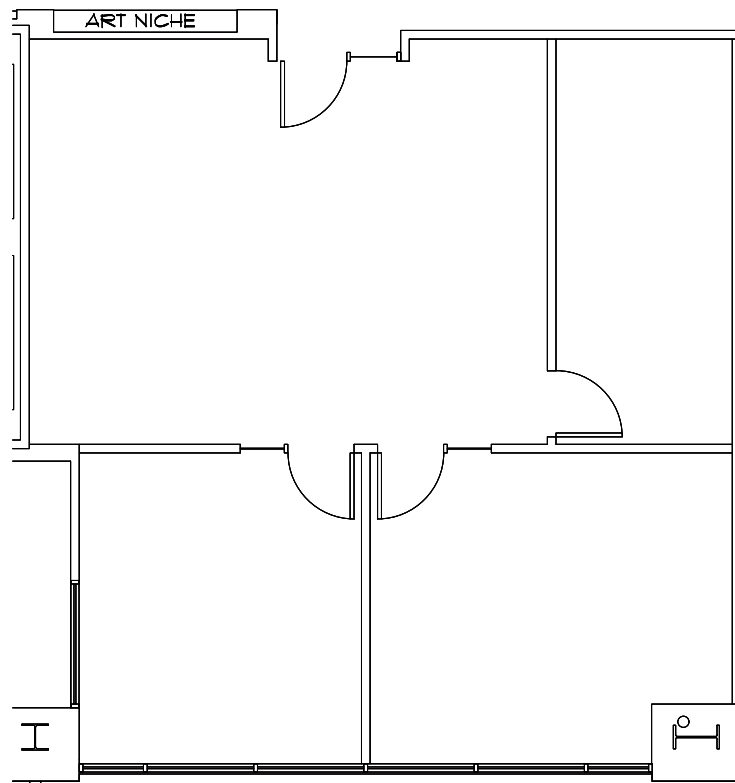


# SUITE 220

+/-1,289 RSF

Available February 1, 2026

- Ground floor space right off main building lobby
- Two private offices on the glass
- Perfect for small financial services or law firm



THESE DRAWINGS ARE NOT TO SCALE AND ARE FOR ILLUSTRATIVE PURPOSES ONLY

SUITE PHOTOS  
COMING SOON

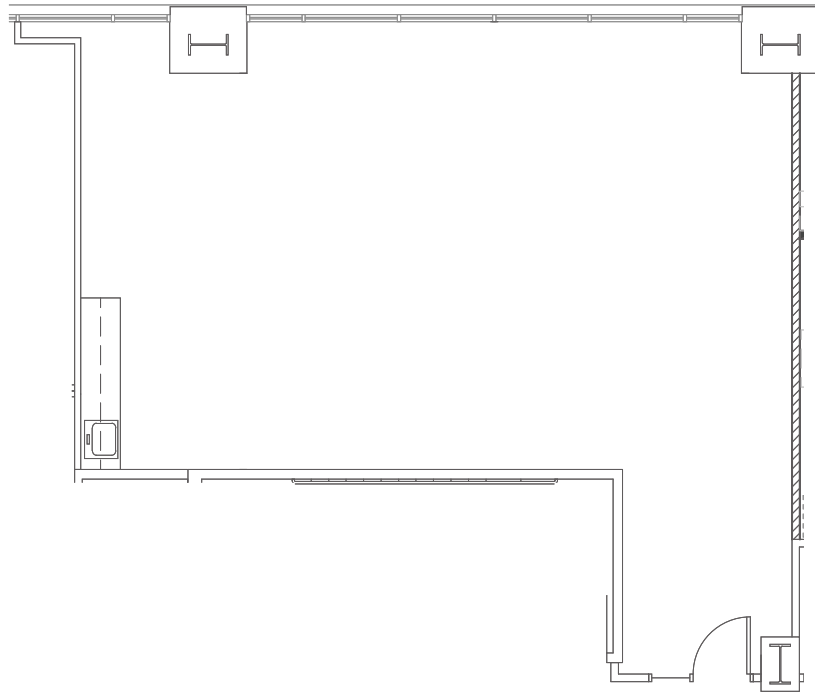


# SUITE 250

+/-1,237 RSF

*Available July 1, 2026*

- Spec suite with new carpet tiles and paint
- Kitchenette upper and lower cabinets, sink, and dishwasher



THESE DRAWINGS ARE NOT TO SCALE AND ARE FOR ILLUSTRATIVE PURPOSES ONLY

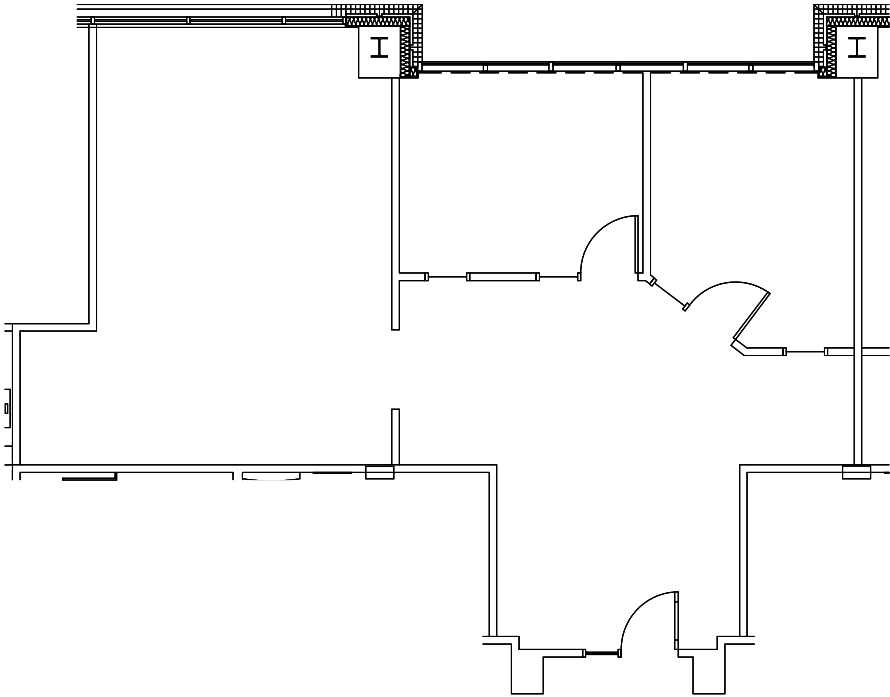
SUITE PHOTOS  
COMING SOON



# SUITE 428

+/-1,274 RSF

- Direct elevator lobby exposure
- High ceilings (11')
- Travertine tile suite entry



THESE DRAWINGS ARE NOT TO SCALE AND ARE FOR ILLUSTRATIVE PURPOSES ONLY

SUITE PHOTOS  
COMING SOON

