



25B North Main Street | Historic Downtown Belmont, NC

Boutique Retail Space for Lease in Historic Downtown Belmont

Approximately **1,100 SF interior** usable retail area with **1,380 Gross SF**

Summary

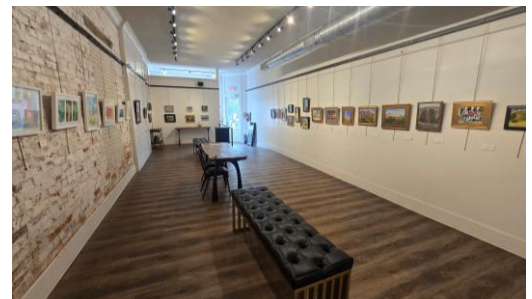
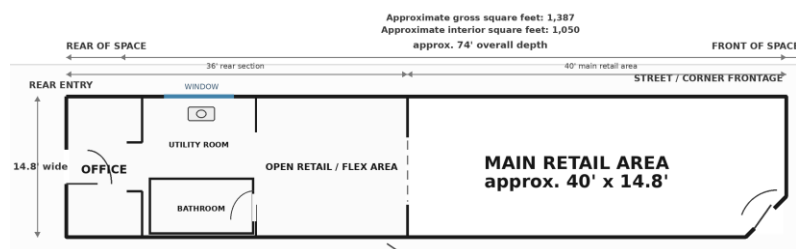
Rare boutique retail opportunity located at **25B North Main Street** in the heart of walkable Historic Downtown Belmont. This approximately **1,100 SF interior space** (1,380 gross SF) is ideal for a gift shop, children's boutique, toy store, home decor shop, specialty food concept, local artisan market or lifestyle retail brand.

Description

Located on the first floor of the storied former Hotel Belmont building, this charming Main Street retail space offers an excellent opportunity for a boutique business to join Belmont's walkable and active downtown districts.

The property is located within the center of Belmont's nationally registered Downtown Historic District and just one block from Stowe Park, a central gathering place for festivals, events, and the Sunday farmers market – over 70 events annually. Belmont's Main Street program and active downtown committees continue to support the area's growth, charm, and business-friendly environment.

This is a rare and a strong opportunity for a retailer looking for a Main Street presence in a vibrant small-town downtown with convenient access to Charlotte, Gaston County, and surrounding communities.



Property Highlights

- Approximately 1,100 SF interior boutique retail space
- Located at 25B North Main Street, Belmont, NC 28012
- First-floor space in the historic former Hotel Belmont building
- Situated in walkable Historic District of Downtown Belmont
- One block from Stowe Park, home to festivals, events, and the Sunday farmers market
- Ideal for boutique retail, gifts, children's shop, toys, home decor, specialty foods, local artisan market, gallery, wellness retail, or lifestyle brand
- Rent includes Triple Net charges
- Tenant responsible for utilities
- Preferred lease term: 3 years
- Cross streets: Glenway Street and North Main Street, just south of Catawba Avenue / Old Hwy 7
- Approximately 6.5 miles from Charlotte Douglas International Airport
- Approximately 13 miles from Uptown Charlotte

Quick Details for Listing Fields

Field	Suggested Entry
Property Type	Retail / Storefront
Address	25B North Main Street, Belmont, NC 28012
Size	Approx. 1,100 SF interior
Lease Type	Rent includes Triple Net charges; tenant responsible for utilities
Lease Term	Preferred 3-year lease term
Best Uses	Boutique retail, gift shop, children's shop, toys, home decor, specialty foods, local artisan market, retail, lifestyle brand
Location Positioning	Historic Downtown Belmont / Main Street / near Stowe Park

