

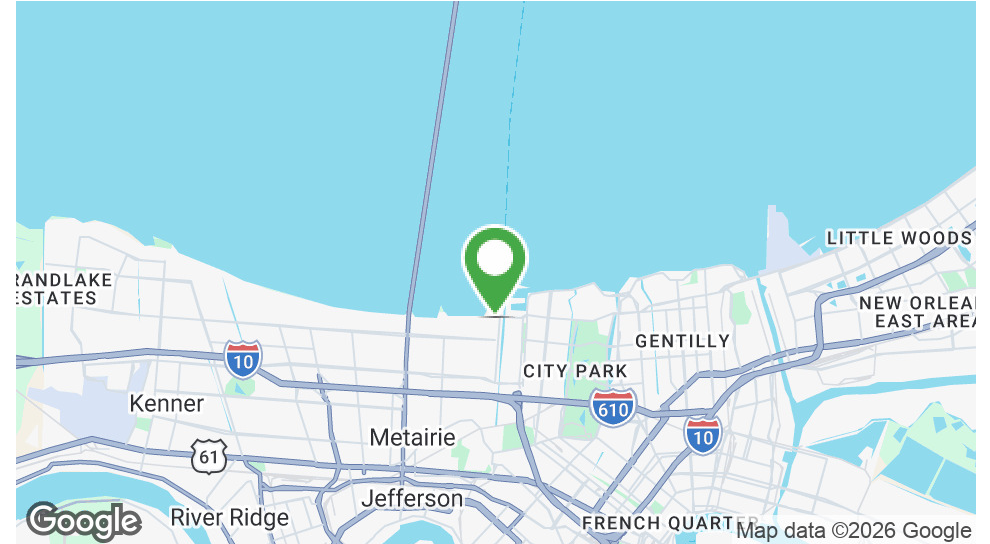


307 Live Oak Street, Metairie, LA 70005

PRICE REDUCED! BUCKTOWN DEVELOPMENT SITE

MATT EATON, CCIM • PARTNER
OFFICE: 504.414.0703
MOBILE: 504.339.2136
matt@matteatonccim.com

MARTIN O. MILLER III, CCIM, SIOR • PARTNER
OFFICE: 504.414.0703
MOBILE: 504.616.5700
momiller@ccim.net



PROPERTY DESCRIPTION

Seize a prime development opportunity with this oversized lot (128' x 92') in the heart of Bucktown, LA. Zoned OBM-1, this versatile property is ideal for home developers looking to build residential or multi-family units, with additional potential for commercial development. Located steps from established restaurants and the vibrant Bucktown Marina, the site offers access to a thriving community. Situated in a sought-after residential area, it provides easy connection to major thoroughfares, making it perfect for a high-value project in a high-demand location.

Recently reduced in price, this property presents an exceptional value for developers and investors looking to capitalize on one of the area's most desirable locations. The seller is highly motivated and ready to make a deal, creating a rare opportunity to secure a premier development site at an attractive price point.

OFFERING SUMMARY

Sale Price:	\$460,000
Lot Size:	0.27 Acres
Zoning:	OBM-1

DEMOGRAPHICS	3 MILES	5 MILES	10 MILES
Total Households	35,347	112,740	269,215
Total Population	78,639	252,569	621,188
Average HH Income	\$124,801	\$93,184	\$87,542

LAND FOR SALE

PROPERTY SUMMARY

SOUTHEAST COMMERCIAL REAL ESTATE | 2310 19th Street, Gulfport, MS 39501 | 3900 N Causeway Blvd., Suite 100, Metairie, LA 70002 | www.southeastcre.com



SOUTHEAST COMMERCIAL
REAL ESTATE





307 Live Oak Street, Metairie, LA 70005

PRICE REDUCED! BUCKTOWN DEVELOPMENT SITE

MATT EATON, CCIM • PARTNER

OFFICE: 504.414.0703

MOBILE: 504.339.2136

matt@matteatonccim.com

MARTIN O. MILLER III, CCIM, SIOR • PARTNER

OFFICE: 504.414.0703

MOBILE: 504.616.5700

momiller@ccim.net

Metairie-Hammond Hwy

Maria Calvo, LLC



LAND FOR SALE

AERIAL



SOUTHEAST
COMMERCIAL
REAL ESTATE

SOUTHEAST COMMERCIAL REAL ESTATE | 2310 19th Street, Gulfport, MS 39501 | 3900 N Causeway Blvd., Suite 100, Metairie, LA 70002 | www.southeastcre.com





307 Live Oak Street, Metairie, LA 70005

PRICE REDUCED! BUCKTOWN DEVELOPMENT SITE

MATT EATON, CCIM • PARTNER

OFFICE: 504.414.0703

MOBILE: 504.339.2136

matt@matteatonccim.com

MARTIN O. MILLER III, CCIM, SIOR • PARTNER

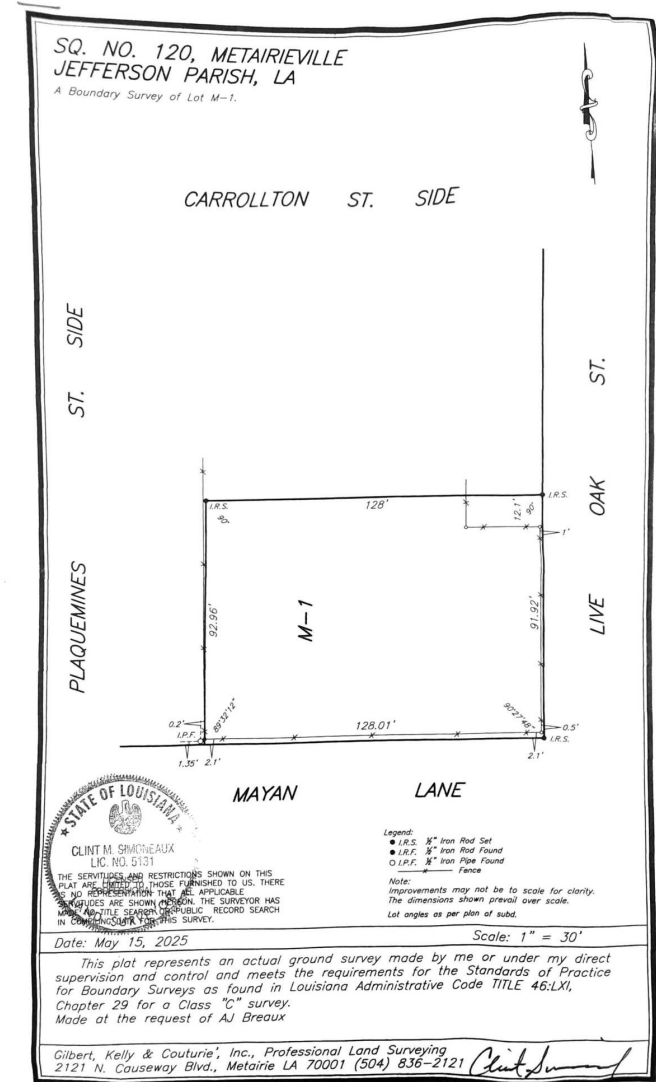
OFFICE: 504.414.0703

MOBILE: 504.616.5700

momiller@ccim.net

Metairie-Hammond Hwy

Mania Calvo LLC



LAND FOR SALE

AERIAL/SURVEY

SOUTHEAST COMMERCIAL REAL ESTATE | 2310 19th Street, Gulfport, MS 39501 | 3900 N Causeway Blvd., Suite 100, Metairie, LA 70002 | www.southeastcre.com



SOUTHEAST COMMERCIAL REAL ESTATE

