

10178 – 10182 | Ave
Hesperia, CA 92345



RYAN TRAVIS

760.983.2594 RTravis@KurschGroup.com

BRE # 01358790 Corporate BRE # 01896143

12180 Ridgecrest Rd, Suite 232, Victorville, CA 92395

760.983.2383 • [Contact@kurschgroup.com](mailto>Contact@kurschgroup.com) • Kurschgroup.com



ADDRESS

10180 I Ave., Unit B
Hesperia, CA 92345

APN:

0410-032-24

PROPERTY OVERVIEW

±2,000sf commercial unit with roll-up door.

MUNICIPALITY

Hesperia | County of San Bernardino

ZONING

Commercial

ASKING PRICE FOR LEASE

\$1.25 per sqft



Site Summary

10180 I Ave, Ste B



ADDRESS

10180 I Ave., Unit C
Hesperia, CA 92345

APN:

0410-032-24

PROPERTY OVERVIEW

±2,000sq ft suite comprised of an open front showroom area. Three (3) private offices. Rear warehouse area with stairs accessing a storage mezzanine above the offices. Equipped with a swap cooler in the warehouse and radiant gas-powered heater.

MUNICIPALITY

Hesperia | County of San Bernardino

ZONING

Commercial

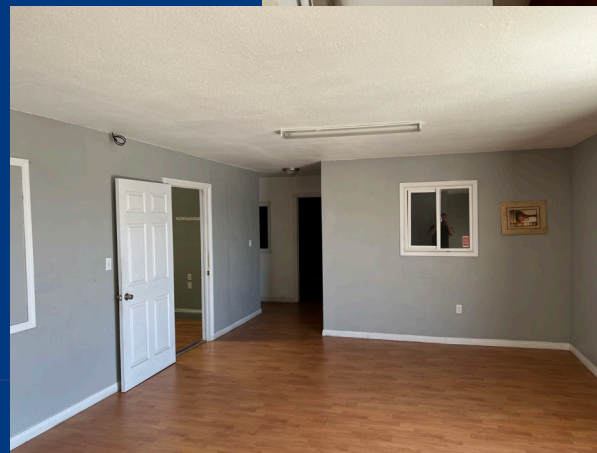
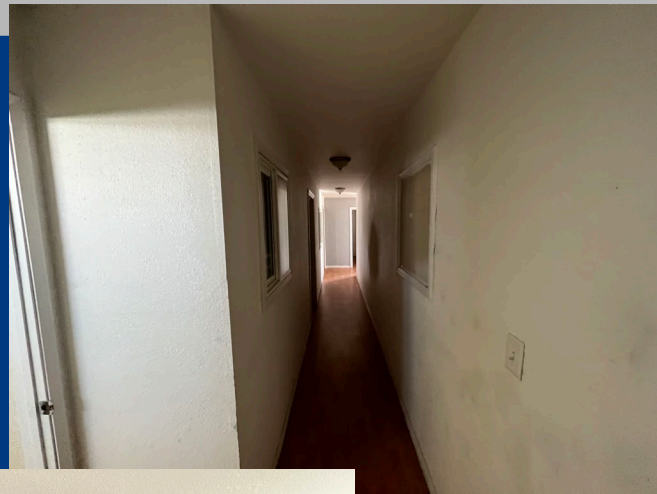
ASKING PRICE FOR LEASE

\$1.25 per sqft



Site Summary

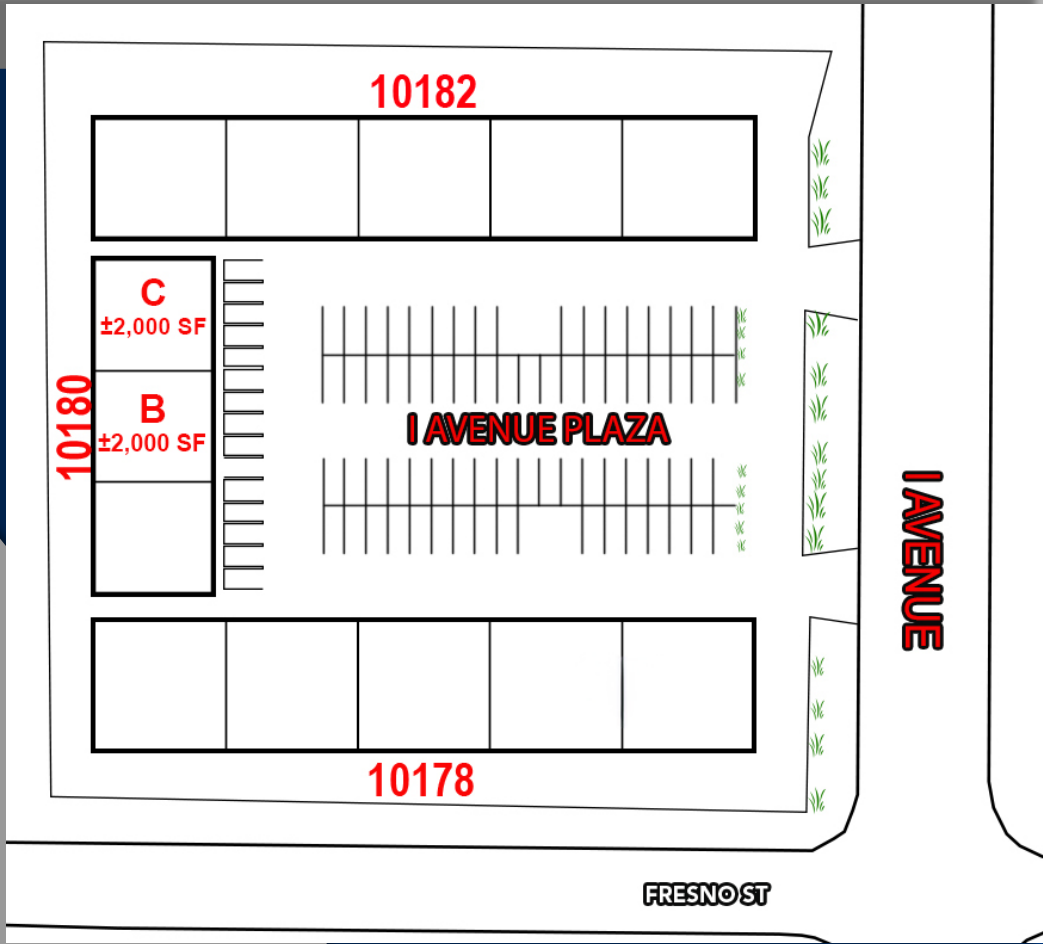
10180 I Ave, Ste C



10180 I Ave, Ste C



This information has been secured from sources we believe to be reliable. Kursch Group, Inc. and/or agents involved, make no representations or warranties, expressed or implied, as to the accuracy of the information. All information should be verified with another outside agency, government entity or property owner as applicable.



This information has been secured from sources we believe to be reliable. Kursch Group, Inc. and/or agents involved, make no representations or warranties, expressed or implied, as to the accuracy of the information. All information should be verified with another outside agency, government entity or property owner as applicable.



SUBJECT PROPERTY
 10180 I AVE, HESPERIA
 9,702 SQ. FT., ZONED COMMERCIAL

