



# CATHEDRAL PLACE

925 West Georgia Street  
Vancouver, BC

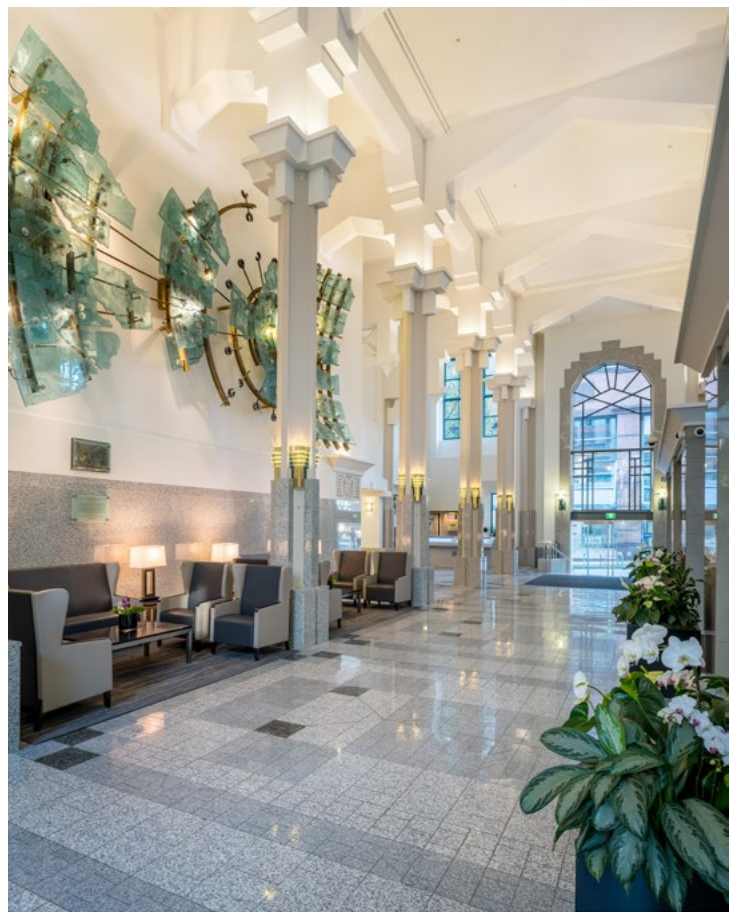




## Building Highlights

This iconic 331,965 square foot, 23 storey building provides some of the finest quality office accommodation in downtown Vancouver.

- Prominent architectural landmark
- Award winning grand lobby with multiple entrances
- On-site food, coffee and other retail amenities
- Dedicated parking and freight elevators
- Abundant underground parking and bike storage
- Floor to ceiling low-e glazing
- Efficient, column-free floor plates
- Smart energy management system
- On-site building management
- 10 EV charging stations
- Brand new end-of-trip facility



## Location

Cathedral Place is prominently located on the northwest corner of Hornby and West Georgia Streets in the very heart of Vancouver's Central Business District. One block away from Pacific Centre and Robson Street, a wide array of restaurants and the city's finest shops are all located within a short walking distance. Transport links are excellent with Burrard and Granville Stations located within close proximity, providing quick access to SkyTrain.



# Office Space Currently Available For Lease

**PORTION OF THE 5TH FLOOR  
APPROXIMATELY 7,335 SF**

**Suite 520: 3,584 SF**

**Suite 530: 3,751 SF**

The 5th floor has recently been upgraded with new common corridor and elevator lobby finishes. The space is in base building “white box” condition to new modern open ceiling plan with new LED pendant lighting.

Suite 520 & 530 may also be combined for 7,335 square feet, or leased in conjunction with the entire 6th floor for contiguous space totaling approximately 23,395 square feet.

**Asking Rental Rates:** Contact listing agent

**Additional Rent:** \$23.01 psf

**Parking:** 1 stall per 1,000 sq. ft.

**6TH FLOOR - 16,060 SF**

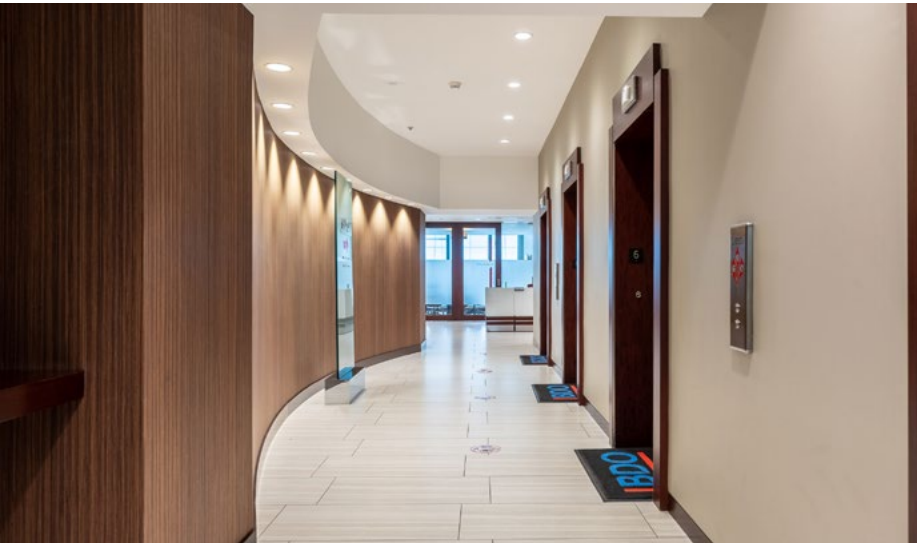
**Suite 600:** Full floor leasing opportunity at Cathedral Place. Existing improvements are constructed to a traditional “COVID” friendly layout with many exterior offices. May be leased in conjunction with 7,335 square feet on the 5th floor for contiguous space totaling 23,395 square feet with existing internal stairwell connection between floors.

**Availability:** Immediately

**Asking Rental Rates:** Contact listing agent

**Additional Rent:** \$23.01 psf

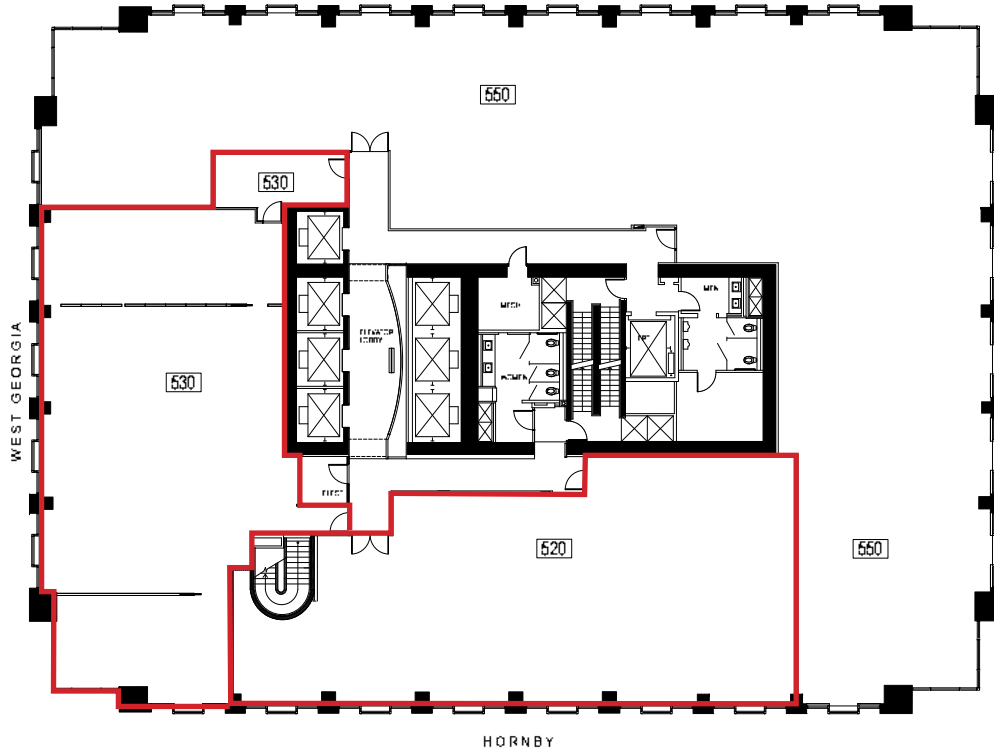
**Parking:** 1 stall per 1,000 sq. ft.



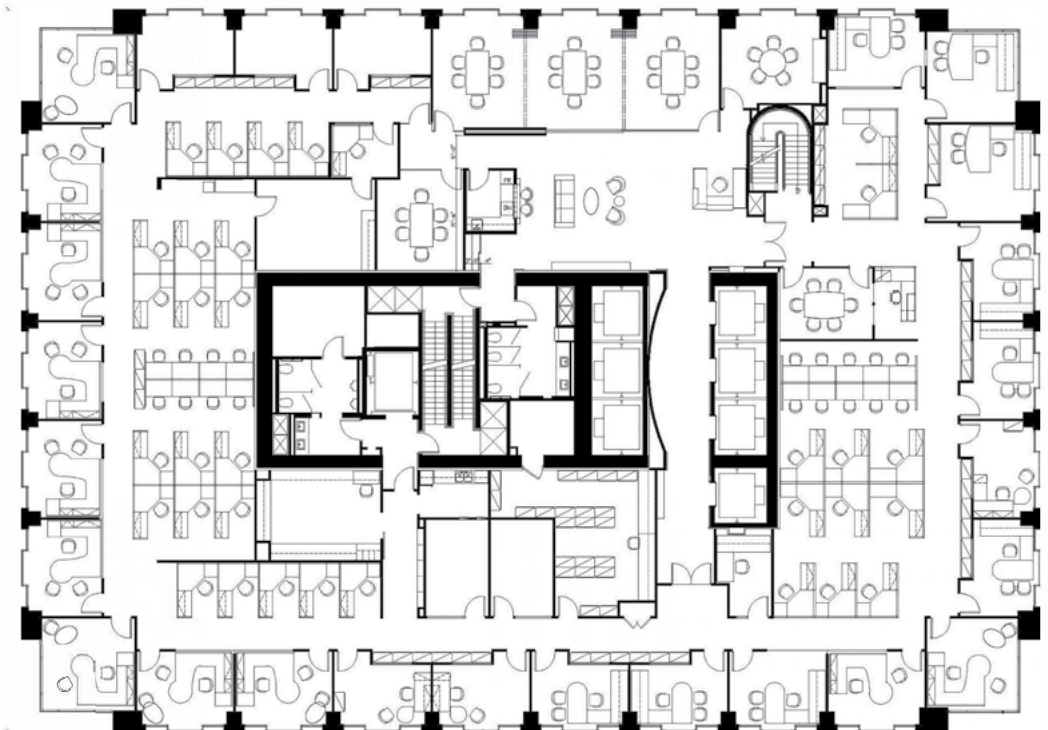
# Floor Plans

SUITE 520 - 3,584 SF

SUITE 520 - 3,751 SF



6TH FLOOR - 16,060 SF



# 5th Floor Remodel





## Contact:

### Mark Chambers\*

Executive Vice President  
mark.chambers@am.jll.com

+1 604 998 6005

\*Personal Real Estate Corporation

### Paris Lavan

Vice President  
paris.lavan@am.jll.com

+1 604 998 6028



jll.ca

TELUS Garden  
510 West Georgia Street  
Suite 2150, 21st Floor,  
Vancouver, BC V6B 0M3

© 2022 Jones Lang LaSalle, Inc. All rights reserved. All information contained herein is from sources deemed reliable; however, no representation or warranty is made to the accuracy thereof. Jones Lang LaSalle Real Estate Services, Inc.