



# For Lease | 2,000-4,000 SF Warehouse Space

844-845 Whitlock Ave, Jacksonville, FL

## Property Highlights:

- High-clear warehouse bays offering true operational efficiency
- 12' x 14' grade-level loading doors for seamless material handling and deliveries
- Strategic Arlington Expressway location providing unmatched reach across Jacksonville
- Zoning & layouts ideal for contractors, distributors, storage, production, and commercial service users



**Asking Rate:**  
Contact Broker for Pricing



**Square Footage:**  
2,000 SF - 4,000 SF



**Clear Height / Door:**  
18' Clear / 12' x 14' Grade Level



**Parking Ratio:**  
2 / 1,000



**Zoning:**  
PUD



**Scan to  
Schedule  
a Tour**

**FOR MORE INFORMATION  
PLEASE CONTACT:**

**Kevin Delarosa**  
407.761.6190  
kdelarosa@kollektion.com

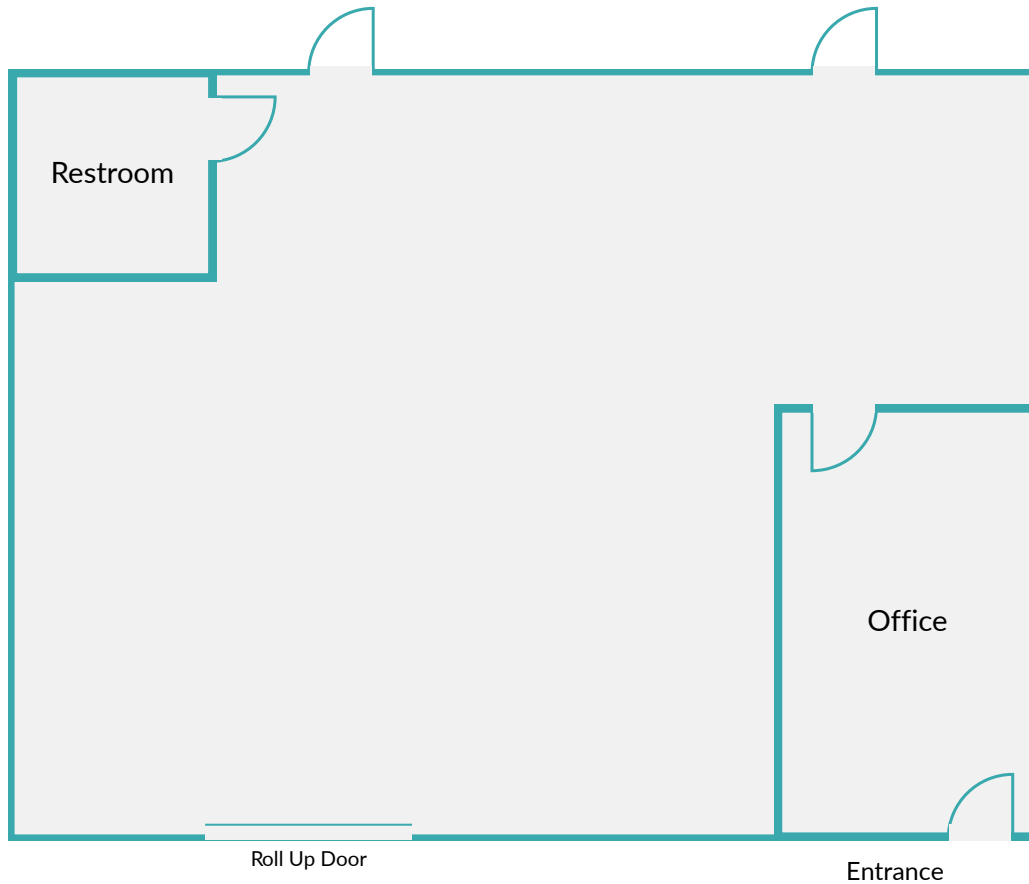
**Shalini Hersowitz**  
954.254.0824  
shersowitz@kollektion.com

**COLLEKTION  
PROPERTIES**

The information contained herein has been obtained from sources deemed reliable, however, Kollektion Properties makes no guarantees, warranties or representation as to its completeness or accuracy thereof. The presentation of this property is submitted subject to errors, omissions, change of price or conditions, prior to sale or lease or withdrawal without notice.

# UNIT 908

2,000 SF



*\*Floor plan is for illustrative purposes only. All dimensions and layouts are approximate and subject to change.*



FOR MORE INFORMATION  
PLEASE CONTACT:

Kevin Delarosa  
407.761.6190  
kdelarosa@kollektion.com

Shalini Hersowitz  
954.254.0824  
shersowitz@kollektion.com

COLLEKTION  
PROPERTIES

The information contained herein has been obtained from sources deemed reliable, however, Kollektion Properties makes no guarantees, warranties or representation as to its completeness or accuracy thereof. The presentation of this property is submitted subject to errors, omissions, change of price or conditions, prior to sale or lease or withdrawal without notice.



# For Lease | 2,000-4,000 SF Warehouse Space

844-845 Whitlock Ave, Jacksonville, FL



Jacksonville Int'l Airport	18 Miles
Jaxport Talley Road	4.8 Miles
Interstate 295	11 Miles
Interstate 95	5 Miles
Interstate 10	6.8 Miles

FOR MORE INFORMATION  
PLEASE CONTACT:

Kevin Delarosa  
407.761.6190  
kdelarosa@collektion.com

Shalini Hersowitz  
954.254.0824  
shersowitz@collektion.com

COLLEKTION  
PROPERTIES

The information contained herein has been obtained from sources deemed reliable, however, Collektion Properties makes no guarantees, warranties or representation as to its completeness or accuracy thereof. The presentation of this property is submitted subject to errors, omissions, change of price or conditions, prior to sale or lease or withdrawal without notice.