



FOR SALE

# 1,582 SF FOR SALE: \$210,000

## Key Features

- Located in Northwest Medical Center on the hospital campus
- Space has been well maintained and can be move-in ready
- Efficient and great layout for medical practice
- Co-locate with Kino & Jersey Colleges & Valley ENT
- Rare opportunity to purchase medical condo on hospital campus

## Property Details

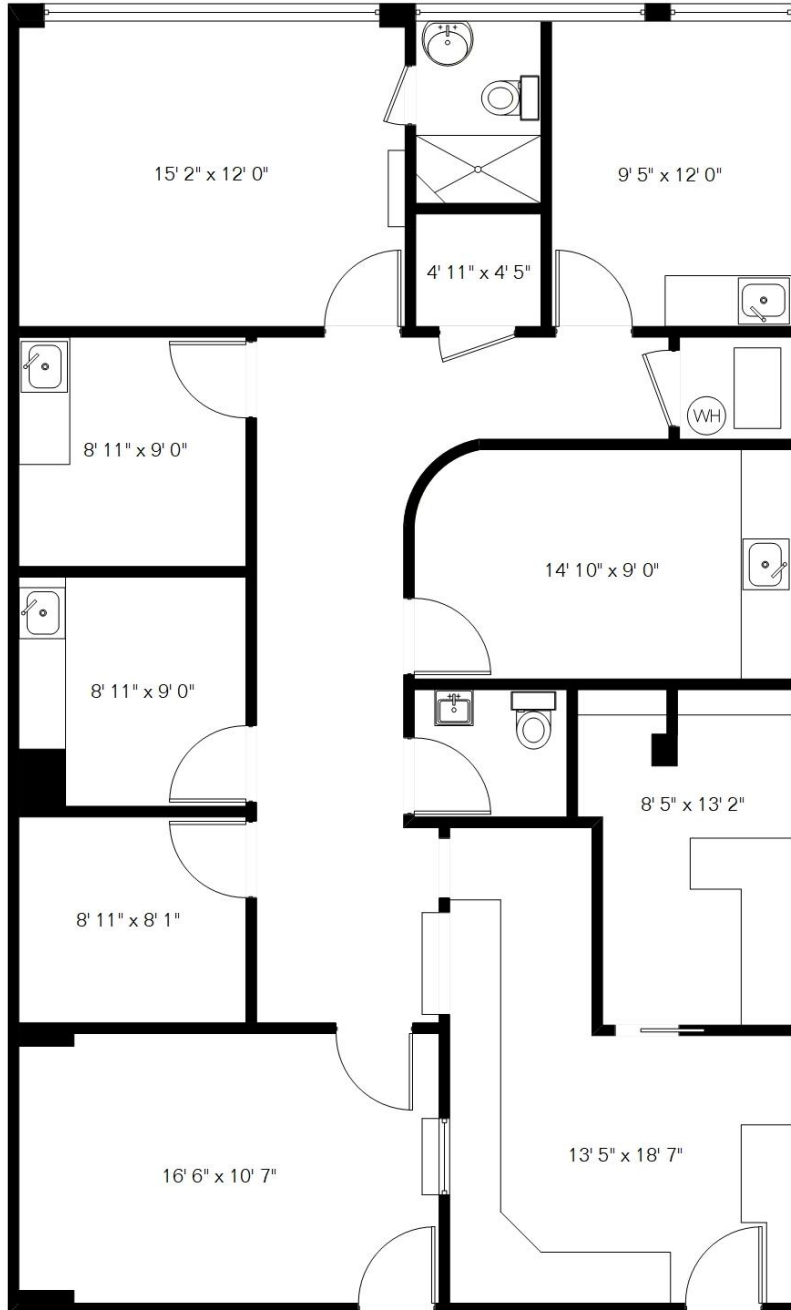
Type	Medical Condo
Assessor Parcel No.	102-12-032A
Zoning	SP (Pima County)
Year Built	1986
2025 Taxes	\$4,234.25



Molly Mary Gilbert, CCIM  
Office Properties  
+1 520 546 2766  
[mgilbert@picor.com](mailto:mgilbert@picor.com)

[picor.com](http://picor.com)

Floor Plan – Suite 204 – 1,582 SF



Molly Mary Gilbert, CCIM  
Office Properties  
+1 520 546 2766  
[mgilbert@picor.com](mailto:mgilbert@picor.com)

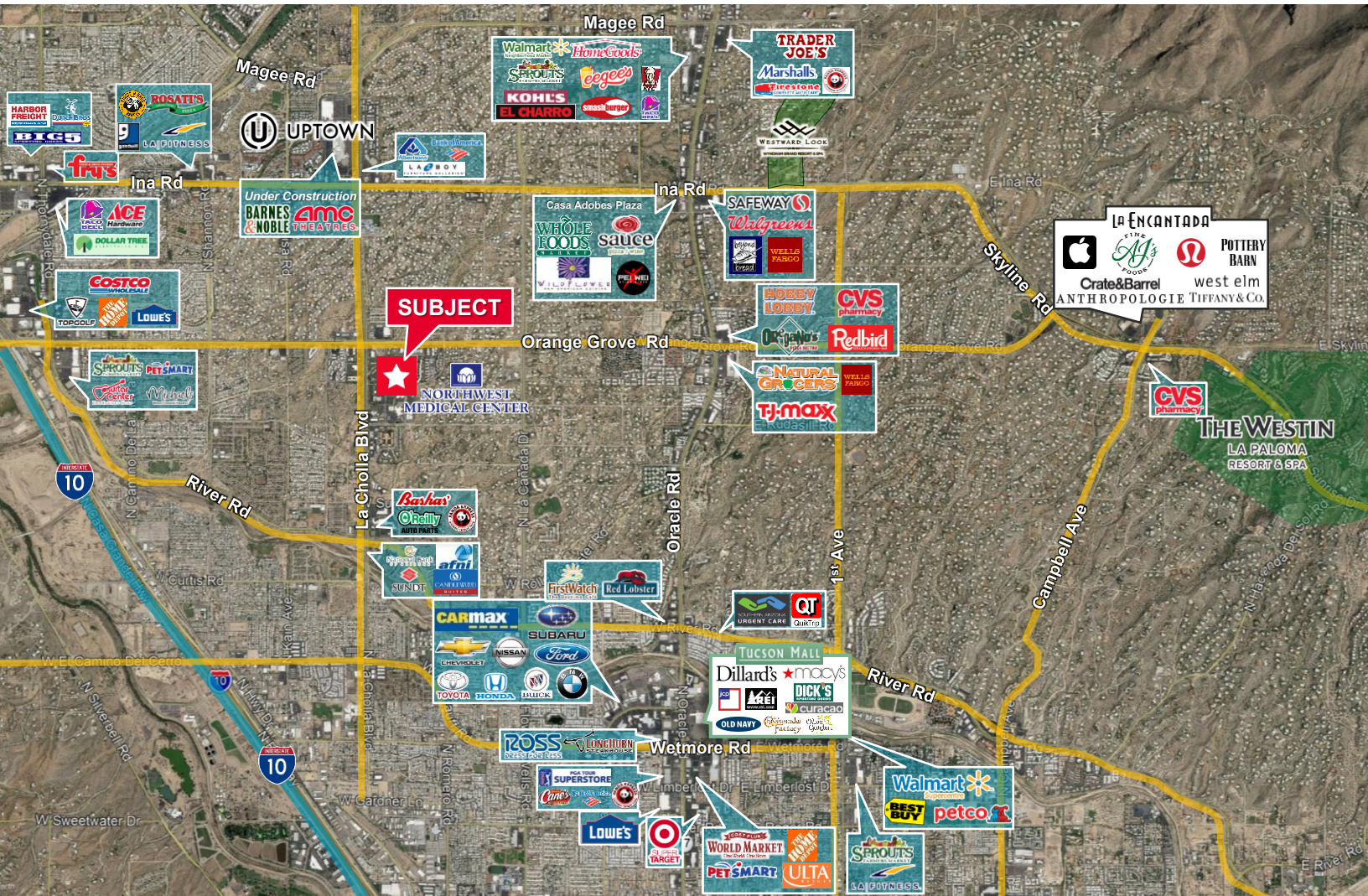
picor.com



Molly Mary Gilbert, CCIM  
Office Properties  
+1 520 546 2766  
[mgilbert@picor.com](mailto:mgilbert@picor.com)

picor.com

# Trade Map



Molly Mary Gilbert, CCIM  
Office Properties  
+1 520 546 2766  
[mgilbert@picor.com](mailto:mgilbert@picor.com)

picor.com

## Tucson Market Overview



**1.08M**  
TUCSON MSA  
POPULATION



**459,300**  
TOTAL  
HOUSEHOLDS



**37%**  
COLLEGE  
EDUCATION



**0.5%**  
POPULATION  
GROWTH RATE  
(YOY)



**\$76,000**  
MEDIAN HOUSEHOLD  
INCOME



**4.2%**  
UNEMPLOYMENT  
RATE



**54,384**  
UNIVERSITY OF ARIZONA  
TOTAL ENROLLMENT, 2026

- TIER 1 - PRIMARY CARE & TIER 2 - RESEARCH
- #2 MANAGEMENT INFORMATION SYSTEMS
- #4 BEST FOR VETERANS
- #8 SPACE SCIENCE (GLOBAL)
- #32 BEST UNDERGRAD BUSINESS PROGRAM
- TOP 50 PUBLIC UNIVERSITY
- #115 BEST GLOBAL UNIVERSITY

### LARGEST EMPLOYERS

1. UNIVERSITY OF ARIZONA- 15,000±
2. RAYTHEON MISSILE SYSTEMS- 12,000±
3. DAVIS-MONTHAN AFB- 11,000±
4. BANNER HOSPITAL - 7,000±

### RECENT INDUSTRY ARRIVALS & EXPANSIONS

1. AMAZON
2. CATERPILLAR SURFACE MINING & TECH.
3. HEXAGON MINING
4. BECTON DICKINSON
5. AMERICAN BATTERY FACTORY

Sources: BLS, BEA, Federal Reserve, Moody's Analytics, arizona.edu, suncorridorinc.com, US News & Report, Sites USA  
Cushman & Wakefield | PICOR 3/30/2026

Molly Mary Gilbert, CCIM  
Office Properties  
+1 520 546 2766  
[mgilbert@picor.com](mailto:mgilbert@picor.com)

picor.com