

New Publix Grocery Shopping Center

Now Open at Cypress Bay, Palm Bay, FL

WATSON
COMMERCIAL
REAL ESTATE, INC.

HEARTLAND
DENTAL

Publix
Now Open!

CHASE

CIRCLE K

BABCOCK ST.

ADDRESS

SIZE

TYPE

ZONING

PRICE

**Cypress Bay
Commercial Center**

**1.1 to 2.5
ACRES**

**LOTS
BUILD TO SUIT**

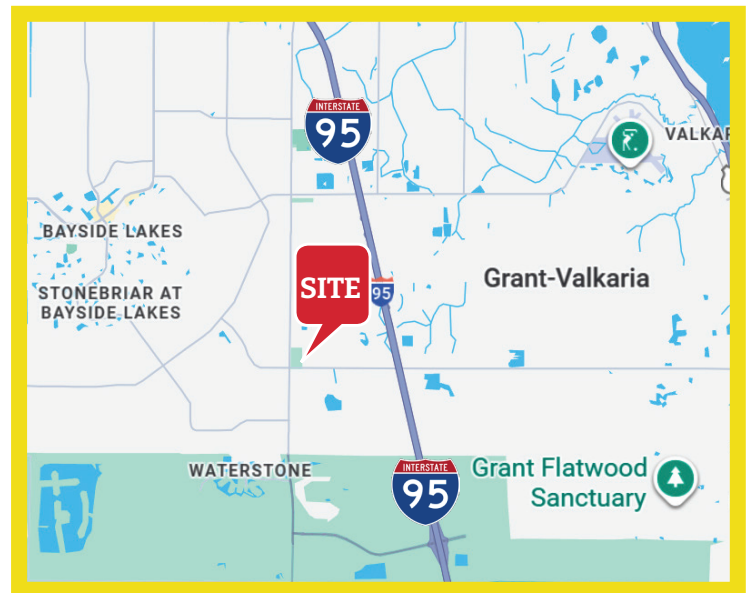
**PUD
ZONING**

Call for Pricing

Property Highlights:

Watson Commercial Real Estate presents this great investment opportunity:

- ✓ Approved major grocery shopping center
- ✓ Waterstone & Cypress Bay 2,773 residential homes being built
- ✓ Cypress Bay Preserve 395 Units under construction
- ✓ 1.6 miles to new I-95/ St John Heritage Pkwy Interchange
- ✓ Utilities stubbed to site



Duane A. Watson

Broker

Office: (321) 459-0000 Ext. 15

Cell: (321) 223-8845

E-mail: duane@duanewatson.com

Office: (321) 459-0000

© 2019 | Watson Commercial Real Estate

335 S. Plumosa Street Merritt Island, FL 32952

Cypress Bay Commercial Center



Summary

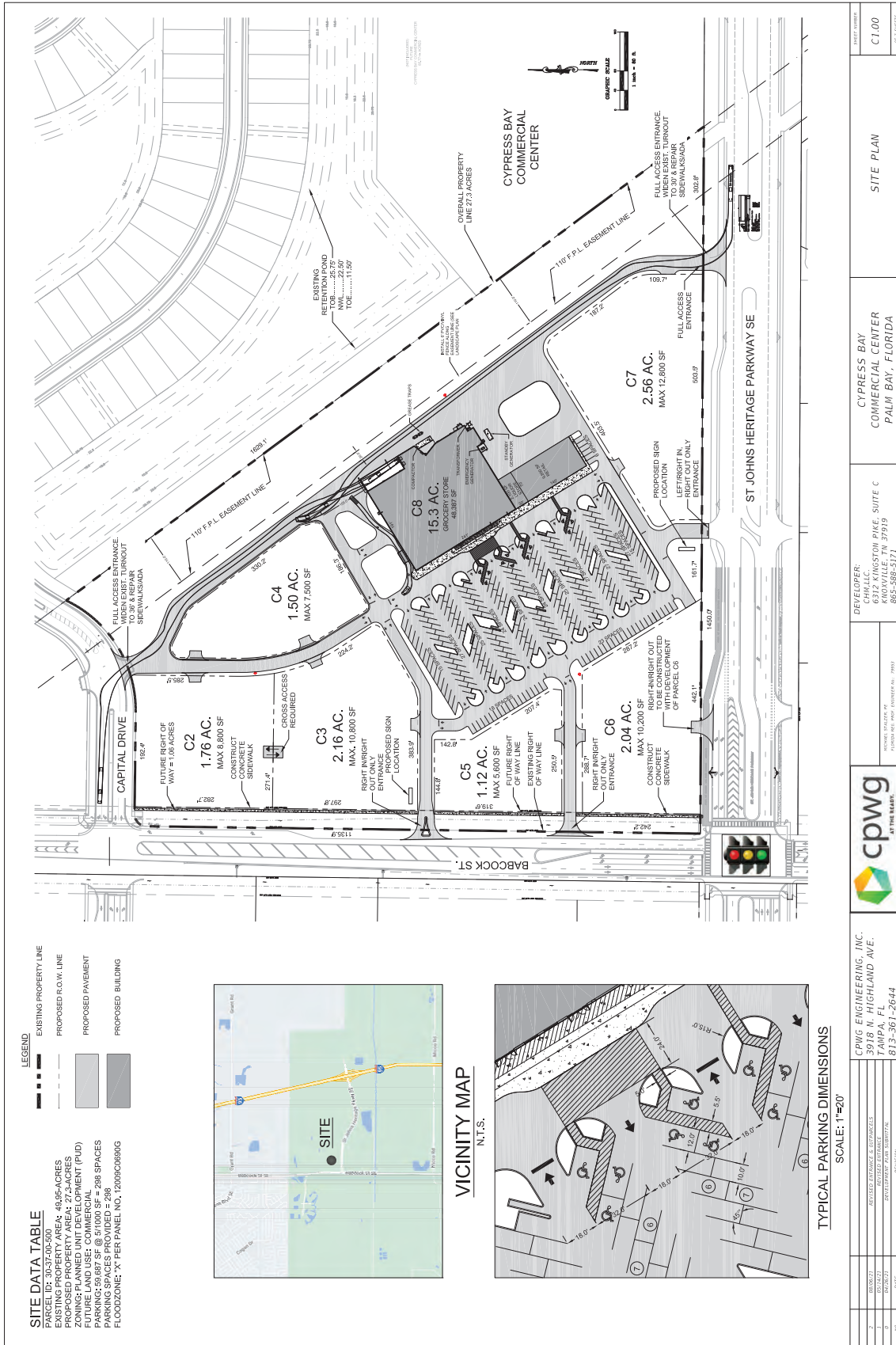
PRICE:	Call for Pricing
TYPE:	Lots for sale
ZONING:	PUD
LOT SIZE:	1.1 to 2.5 ACRES

Property Demographics

	2 MILE	5 MILE	10 MILE
2029 Population Projection	5,287	34,385	168,395
Avg Household Income	\$109,765	\$91,157	\$56,639
2029 Household Projection	1,946	12,399	66,957



Cypress Bay Commercial Center



DATE: 04/11/2019	PROJECT: CYPRESS BAY COMMERCIAL CENTER	SCALE: 1"=20'
DRAWN BY: J. WATSON	DEVELOPER: CHALL, LLC 6312 KINGSTON PIKE, SUITE C PALM BAY, FL 32919 888-588-5177	SITE PLAN
CHECKED BY: J. WATSON	PROJECT NO.: 19001	C1.00
DATE: 04/11/2019	PROJECT: CYPRESS BAY COMMERCIAL CENTER	OF 1 SHEETS

