

FOR LEASE



VIRTUAL TOUR

CLICK HERE



PRICING BREAKDOWN

| | |
|----------------|-------------------------------|
| Available Size | ±5,000 SF |
| Office Area | ±500 SF |
| Lease Rate | \$1.60 PSF / Mo. Gross |
| Term | 3-5 Years |

PROPERTY DETAILS

- Climate-controlled warehouse with HVAC throughout
- One 13' x 14' ground-level loading door
- Two restrooms
- Bonus ±450 SF unfinished mezzanine
- 15' Clear height
- Racks Possibly Available
- Fenced and paved yard area
- High-visibility, high-traffic corner location
- Unincorporated Los Angeles County location, no city business tax
- Landlord may consider high-end automotive-related uses



LOCAL EXPERTISE. INTERNATIONAL REACH. WORLD CLASS.

RON MGRUBLIAN MBA

DRE LIC 01902882

rmgrublian@leelalb.com

562.354.2537

PATRICK REDDY

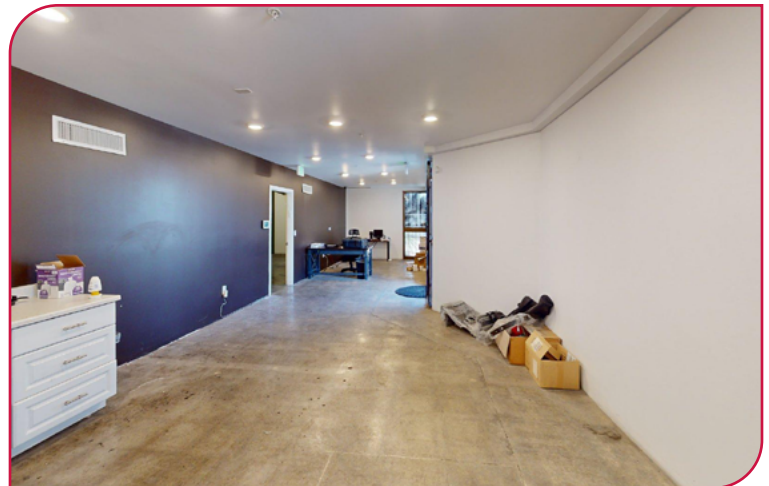
DRE LIC 01901872

preddy@lee-re.com

818.933.0348

Lee & Associates Los Angeles - Long Beach, Inc.
DRE LIC 01069854

Lee & Associates - LA North/Ventura, Inc.
DRE LIC 01191898



LOCAL EXPERTISE. INTERNATIONAL REACH. WORLD CLASS.

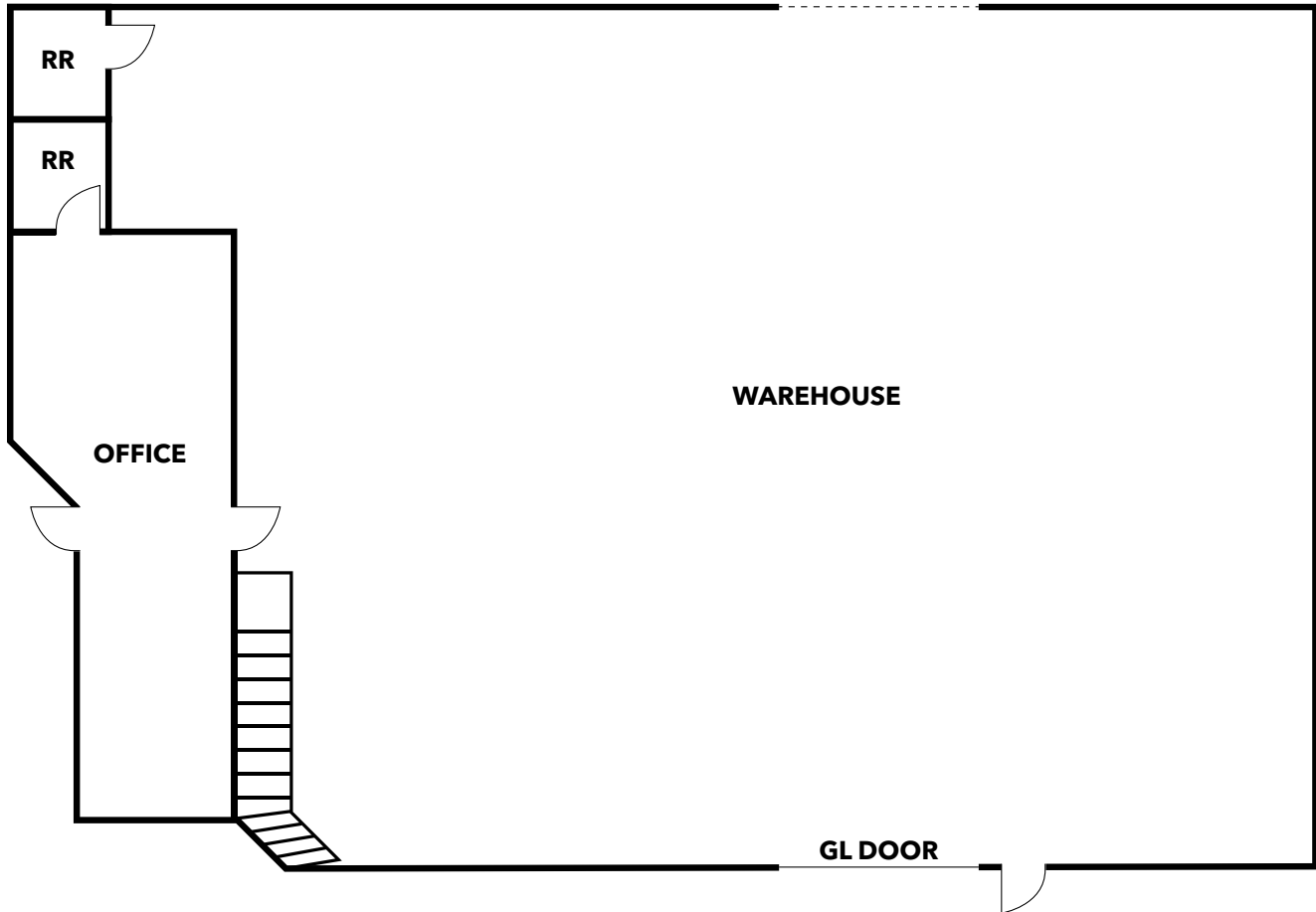
RON MGRUBLIAN MBA
DRE LIC 01902882
rmgrublian@leelalb.com
562.354.2537

PATRICK REDDY
DRE LIC 01901872
preddy@lee-re.com
818.933.0348

Lee & Associates Los Angeles - Long Beach, Inc.
DRE LIC 01069854

Lee & Associates - LA North/Ventura, Inc.
DRE LIC 01191898

FLOOR PLAN



This plan and its measurements are approximate and not up to scale.

It is the responsibility of the buyer/lessee to verify the property's measurements independently.

LOCAL EXPERTISE. INTERNATIONAL REACH. WORLD CLASS.

RON MGRUBLIAN MBA
DRE LIC 01902882
rmgrublian@leelalb.com
562.354.2537

PATRICK REDDY
DRE LIC 01901872
preddy@lee-re.com
818.933.0348

Lee & Associates Los Angeles - Long Beach, Inc.
DRE LIC 01069854

Lee & Associates - LA North/Ventura, Inc.
DRE LIC 01191898