

AVAILABLE



AJ Management

1032 X-Ray Drive
Gastonia, NC

Gaston Medical Park is situated in a tranquil environment, and each suite has its own private entrance and reception area.

Total Parking Spaces: 73; 4.6 per 1,000 sq. ft.

Year Built: 1983

2025 Population/3 miles: 46,793

2025 Median Incomes/3 miles: \$62,901

2025 Population/5 miles: 109,877

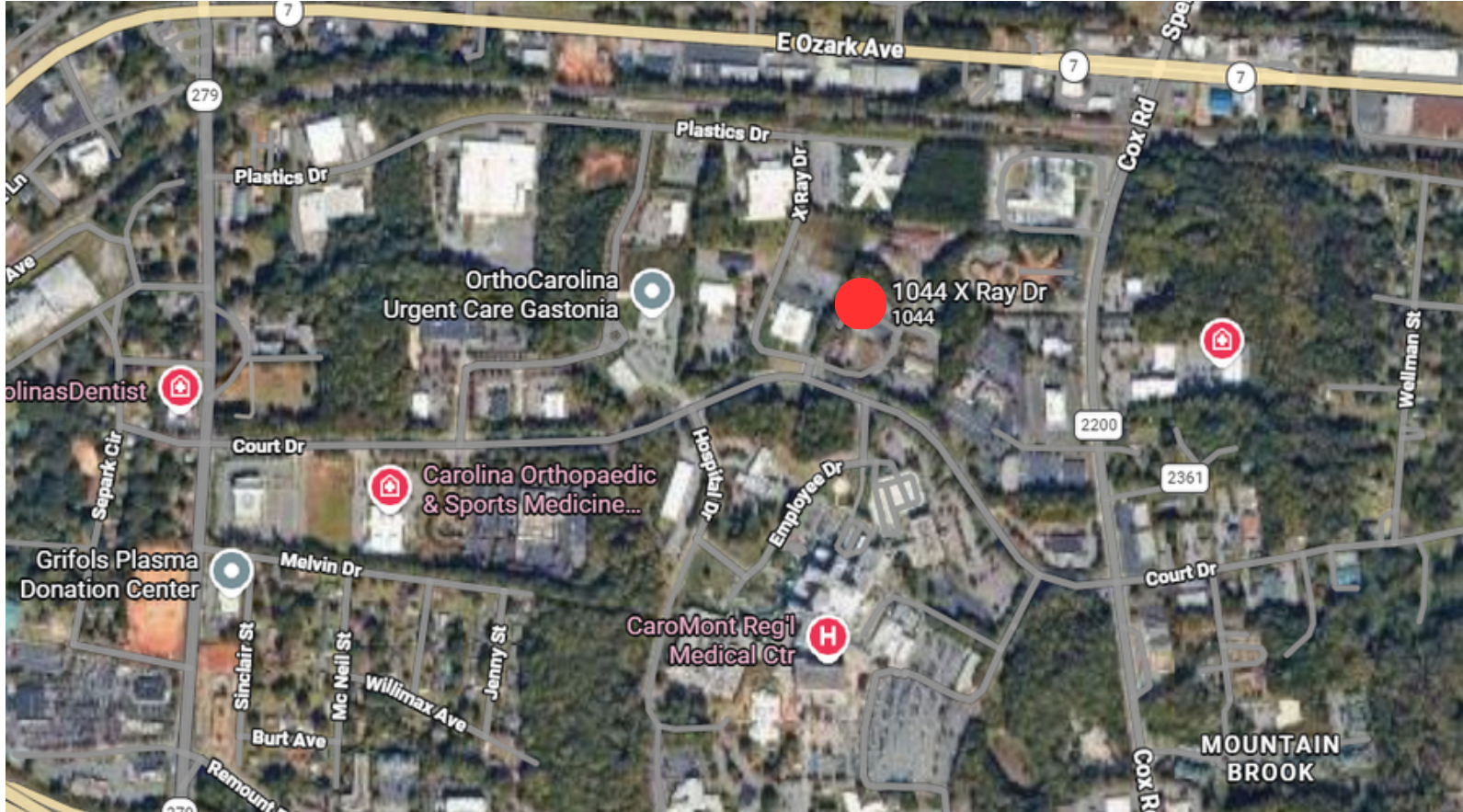
2025 Median Incomes/5 miles: \$63,751

Zoned Office (OFF04)- Suitable for medical and professional office uses.



Gaston Medical Park is a multi-tenant medical office situated on X-Ray drive adjacent to the Caromont Regional Medical Center, the primary general and acute care facility serving Gastonia, NC.

Andrew Gonedes | 646-812-5537 | manager@ajprops.com



1318 Sqaure Feet

1032 X Ray Drive Video Walk Through

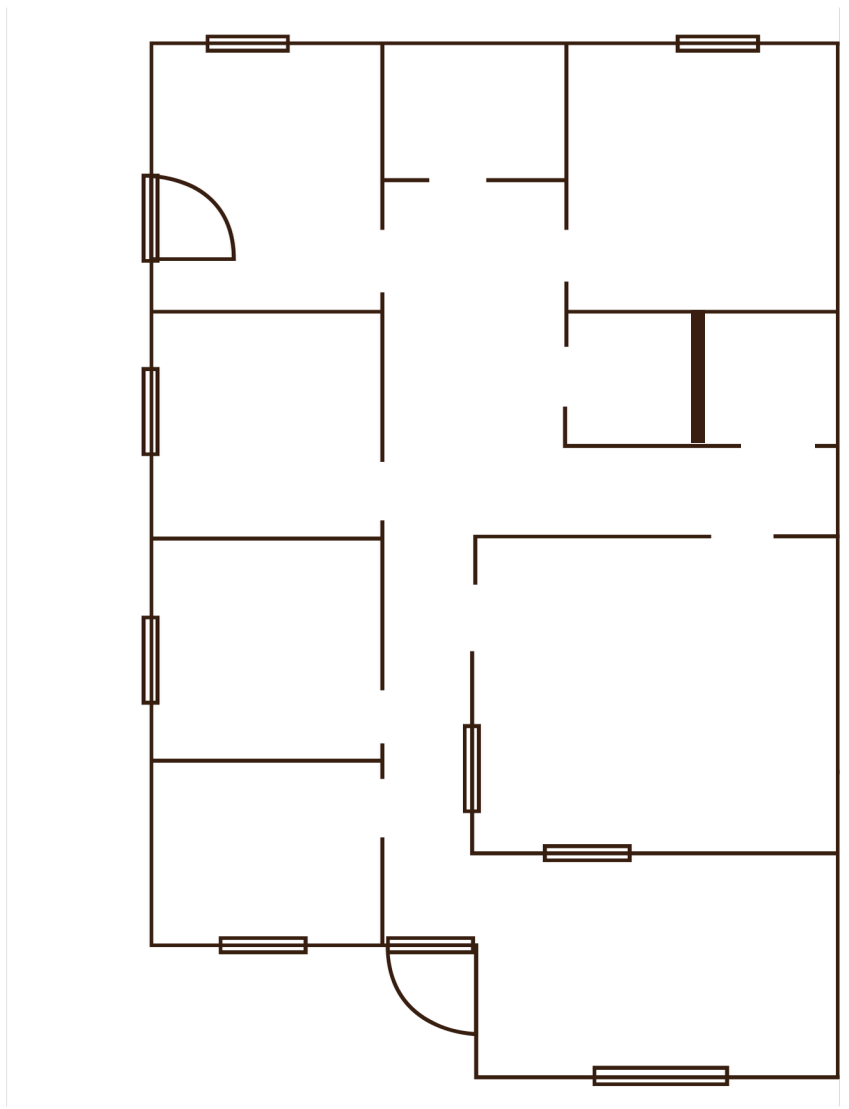


- 5 Private offices/exam rooms
- Lobby
- Reception area
- 2 Bathrooms
- Large storage/IT closet

Rent Negotiable



- **5 Minute drive to I-85 Cox Rd exit**
- **Close proximity to ample restraurants and shopping**
- **Parking directly in front of each suite entrance**



Andrew Gonedes | 646-812-5537 | manager@ajprops.com

Information is sourced from reliable providers but has not been independently verified. No guarantee, warranty, or representation is made regarding its accuracy or completeness.