

7157 HONEYMAN STREET

DELTA, BC



// FOR SALE | UNITS 20, 21, 22

- 9,092 SF of contiguous industrial space
- Corner units with good exposure and grade loading

// FEATURES



THREE GRADE LEVEL LOADING DOORS



SPRINKLERS



18' CEILING HEIGHT



3-PHASE ELECTRICAL SERVICE



THREE WASHROOMS



ZONING: I2 MEDIUM IMPACT INDUSTRIAL



AVAILABLE FOR VACANT POSSESSION

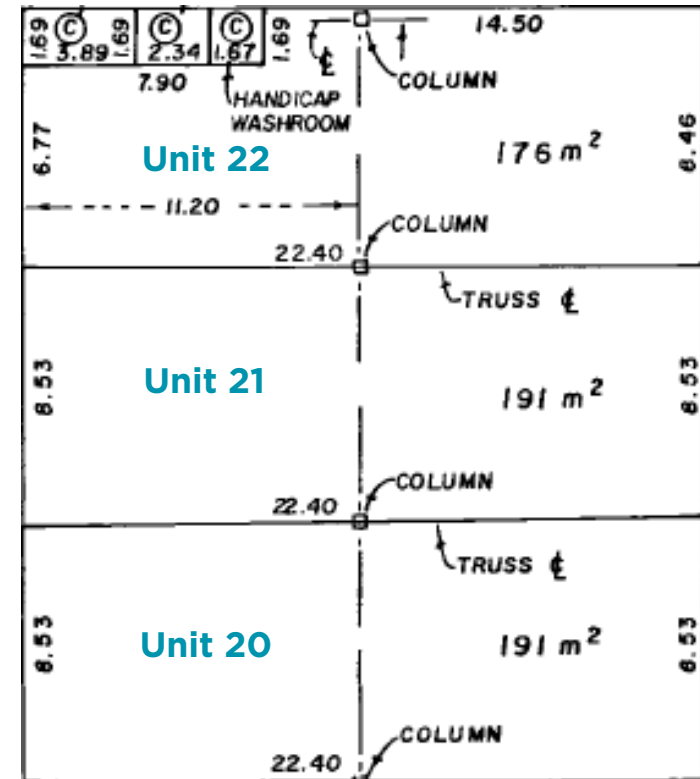
// **ASKING PRICE:**
\$3,900,000

OPPORTUNITY

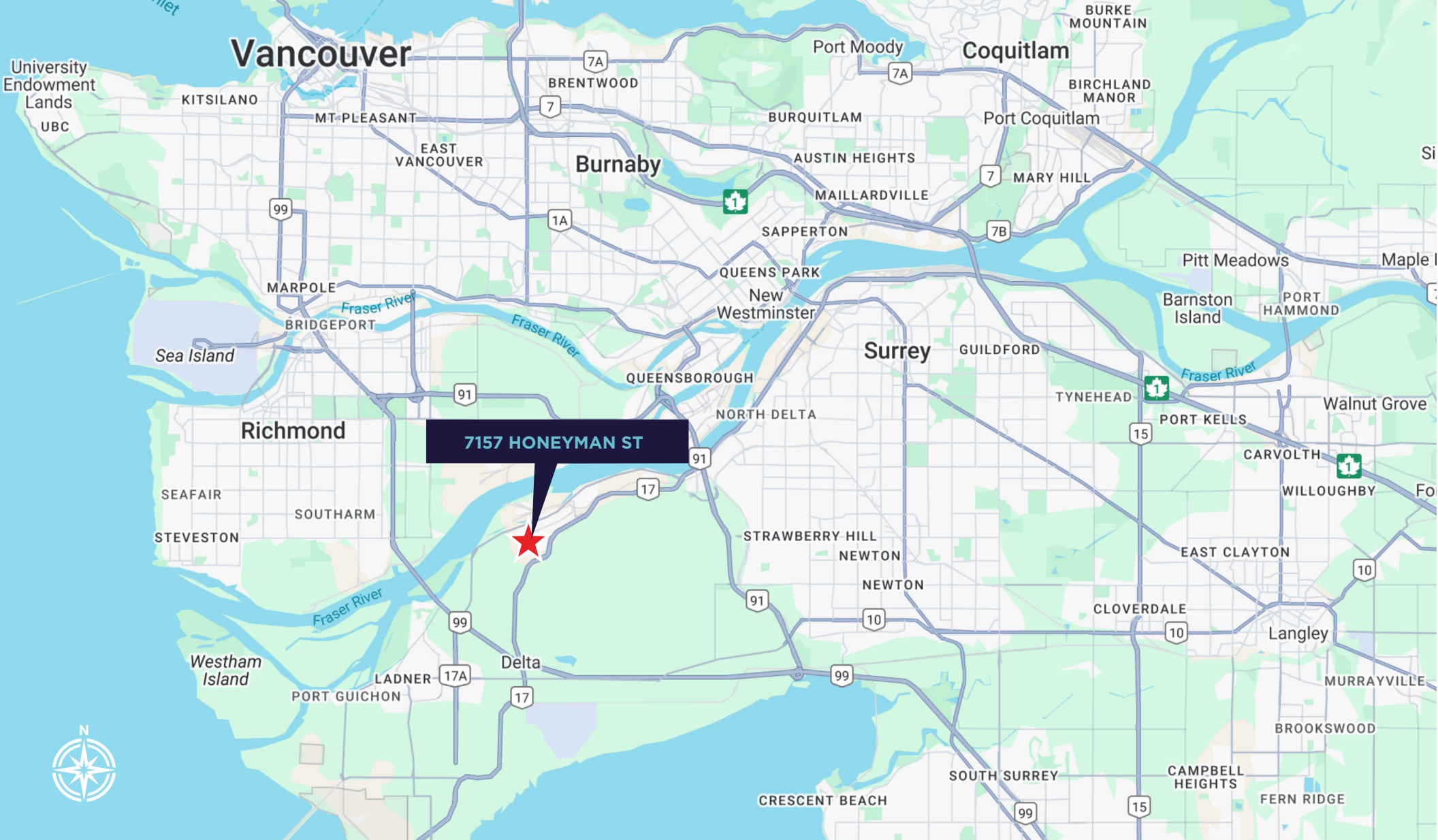
To purchase three contiguous industrial strata units totaling 9,092 SF located in the Tilbury industrial park. These corner units provide exposure to Honeyman Street and have lots of natural light. The complex has a large loading court and ample parking.

BUILDING AREA: UNITS 20, 21, 22

| | |
|--------------|----------|
| Ground Floor | 6,006 SF |
| Mezzanine | 3,086 SF |
| Total | 9,092 SF |



// 7157 HONEYMAN STREET
DELTA, BC



JEFFREY SCHATZ

Associate Vice President
+1 604-608-5968
jeff.schatz@cushwake.com

CUSHMAN & WAKEFIELD
700 West Georgia Street, Suite 1200
Vancouver, BC V7Y 1A1
cushmanwakfield.com

