

# FOR LEASE

## ELLERSLIE SECOND FLOOR OFFICE SPACE

2330 Ellwood Drive SW, Edmonton, AB



### HIGHLIGHTS

- 1,575 sq ft ± second floor space available, with elevator access
- High end office build out
- Join U-Store-It, Kumon, Self Centre Massage & Wellness and more
- Excellent access to 91 Street, Ellerslie Road and Anthony Henday
- Immediate possession

#### JOEL WOLSKI

Director, Associate  
C 780.904.5630  
joel@royalparkrealty.com

#### SCOTT ENDRES

Partner, Broker  
C 780.720.6541  
scott@royalparkrealty.com

#### RAYA WOLSKI

Unlicensed Assistant  
T 780.423.7599  
raya@royalparkrealty.com

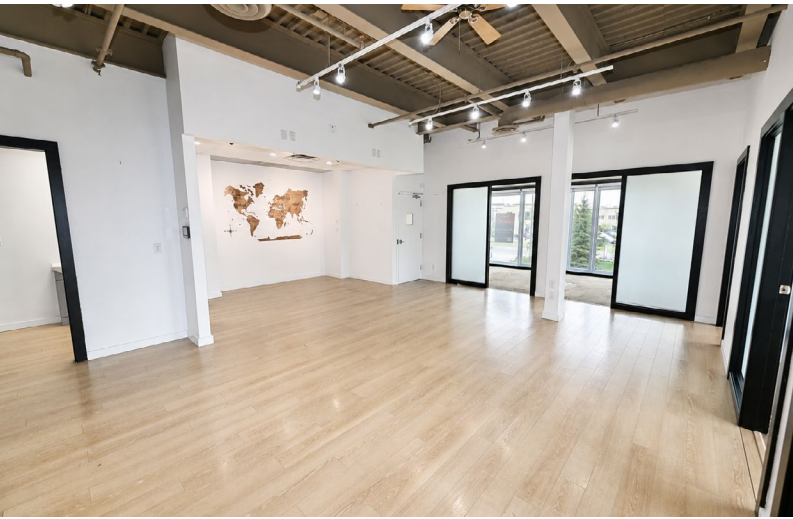


ROYAL PARK  
REALTY™

T 780.448.0800 F 780.426.3007  
#201, 9038 51 Avenue NW Edmonton, AB T6E 5X4

royalparkrealty.com

## 2nd Floor Office For Lease | 2330 Ellwood Drive SW, Edmonton, AB



### Property Details & Financials

MUNICIPAL ADDRESS	2330 Ellwood Drive SW, Edmonton, AB
LEGAL DESCRIPTION	Plan: 0525416; Block: 3; Unit: 4
ZONING	EIB ( <a href="#">Ellerslie Industrial Business</a> )
SIZE	1,575 sq ft ±
PARKING	Ample
SIGNAGE	Pylon & facade
LEASE RATE	<b>\$27.00/sq ft</b>
OP COSTS	\$11.50/sq ft (2026)
POSSESSION	Immediate

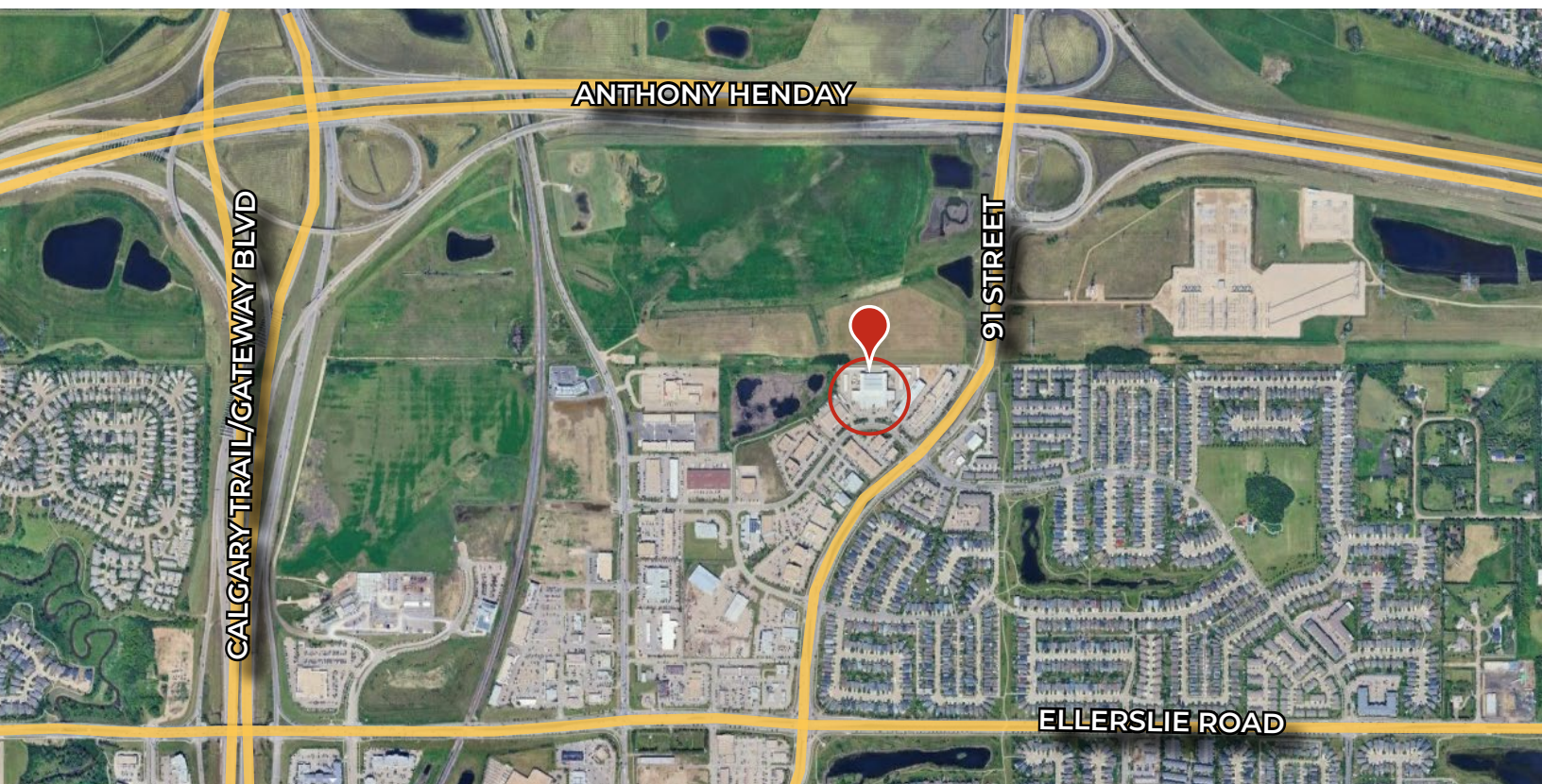


ROYAL PARK  
REALTY™

T 780.448.0800 F 780.426.3007  
#201, 9038 51 Avenue NW Edmonton, AB T6E 5X4

[royalparkrealty.com](http://royalparkrealty.com)

**Property Location | 2330 Ellwood Drive SW, Edmonton, AB**



*Quality Based on Results, Not Promises.*



**JOEL WOLSKI**  
Director, Associate  
C 780.904.5630  
joel@royalparkrealty.com



**SCOTT ENDRES**  
Partner, Broker  
C 780.720.6541  
scott@royalparkrealty.com



**RAYA WOLSKI**  
Unlicensed Assistant  
T 780.423.7599  
raya@royalparkrealty.com



**ROYAL PARK  
REALTY™**

T 780.448.0800 F 780.426.3007  
#201, 9038 51 Avenue NW Edmonton, AB T6E 5X4

[royalparkrealty.com](http://royalparkrealty.com)