



**789**  
**SHERMAN  
CENTER**  
THE GOLD STANDARD

**CBRE**


**CENTREPOINT**  
PROPERTIES




**789**  
**SHERMAN**  
**CENTER**  
 THE GOLD STANDARD




**PROPERTY HIGHLIGHTS**


- 


**BUILDING SIZE:** 100,744 SF  
**NUMBER OF FLOORS:** 6




**TENANT LOUNGE**
- 


**YEAR BUILT:** 1973  
**(RENOVATED 2015)**




**ON-SITE**  
**PROPERTY MANAGEMENT**
- 


**PARKING:**  
 2.18/1,000




**2 BLOCKS TO CHERRY**  
**CREEK TRAIL**
- 

**COMMON**  
**CONFERENCE ROOM**

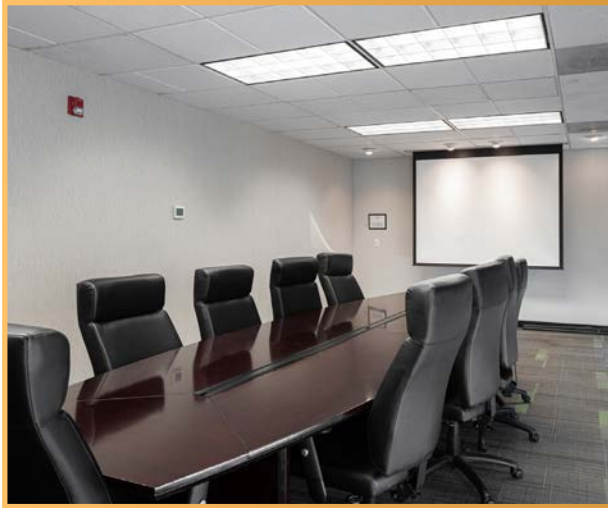


**WALKING DISTANCE TO**  
**SEVERAL RESTAURANTS**
- 

**SECURE BIKE STORAGE**



**RATES STARTING AT:**  
**\$26.00/SF FSG**

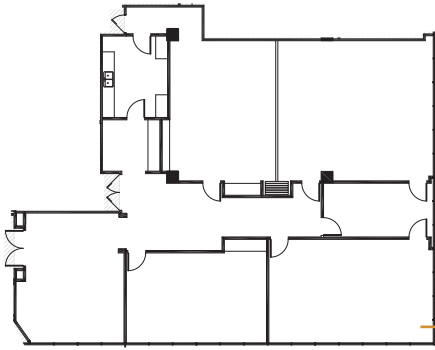




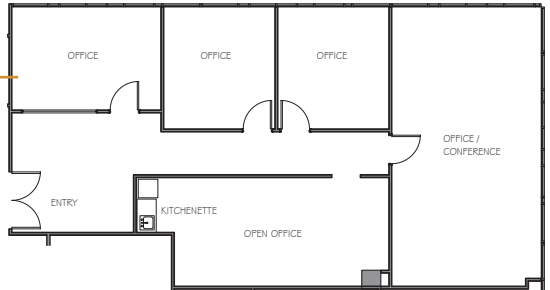
Availability

Suite 100	3,780 SF	Existing Training Room Space with Lobby ID
Suite 105	1,795 SF	3 Offices, 1 Conference Room, and Open Office with Kitchenette
Suite 210	3,398 SF	7 Offices and Large Open Work Area
Suite 220	3,471 SF	8 Offices, Conference Room, and Open Work Area
Suite 400	6,596 SF	3 Offices, 1 Conference Room, Break Room, Work Room, and Open Work Area
Suite 450	1,460 SF	3 Offices, 1 Conference Room, and Open Work Area
Suite 575	3,261 SF	6 Offices, 1 Conference Room, Break Room, and Open Work Area

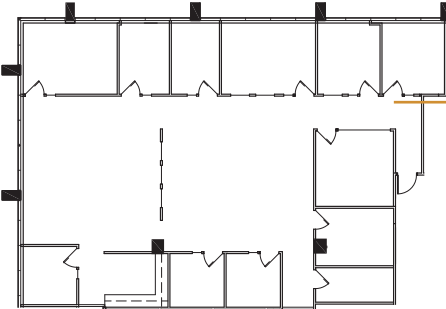
SUITE 100: 3,740 SF



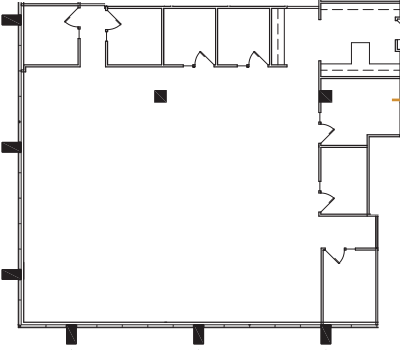
SUITE 105: 1,795 SF



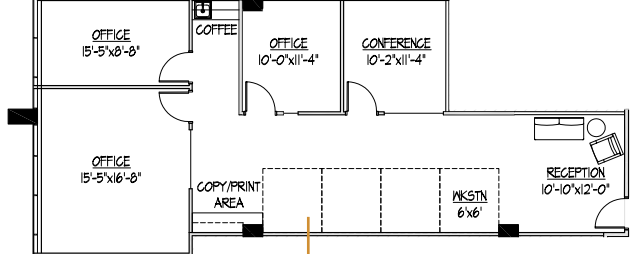
SUITE 220: 3,471 SF



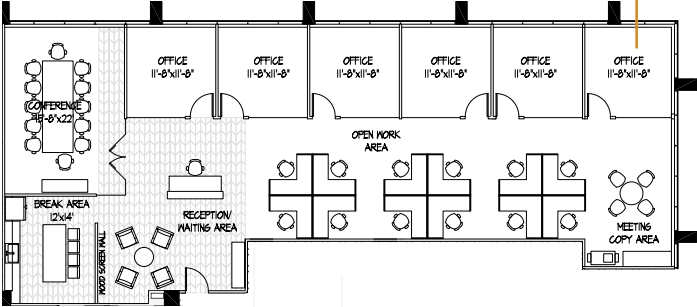
SUITE 210: 3,398 SF



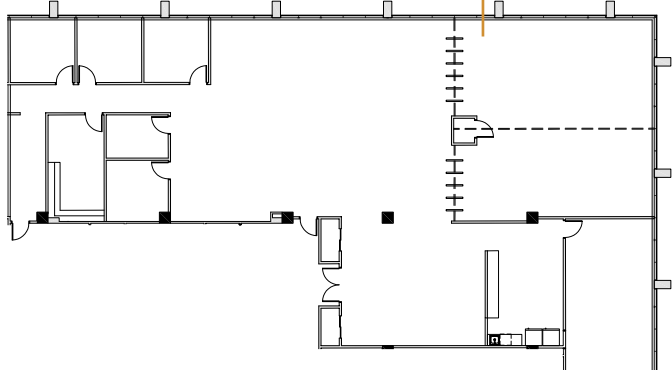
SUITE 450: 1,460



SUITE 575: 3,261 SF



SUITE 400: 6,596 SF



# 789

## SHERMAN CENTER

THE GOLD STANDARD



**BLAKE HOLCOMB**  
 First Vice President  
 303.583.2022  
 blake.holcomb@cbre.com

**BRIAN HUTT**  
 First Vice President  
 303.583.2041  
 brian.hutt@cbre.com



© 2026 CBRE, Inc. All rights reserved. This information has been obtained from sources believed reliable, but has not been verified for accuracy or completeness. You should conduct a careful, independent investigation of the property and verify all information. Any reliance on this information is solely at your own risk. CBRE and the CBRE logo are service marks of CBRE, Inc. All other marks displayed on this document are the property of their respective owners, and the use of such logos does not imply any affiliation with or endorsement of CBRE. Photos herein are the property of their respective owners. Use of these images without the express written consent of the owner is prohibited.