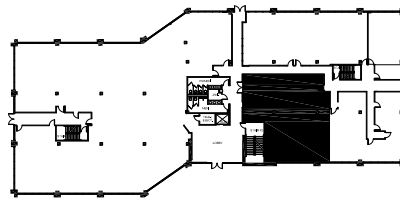
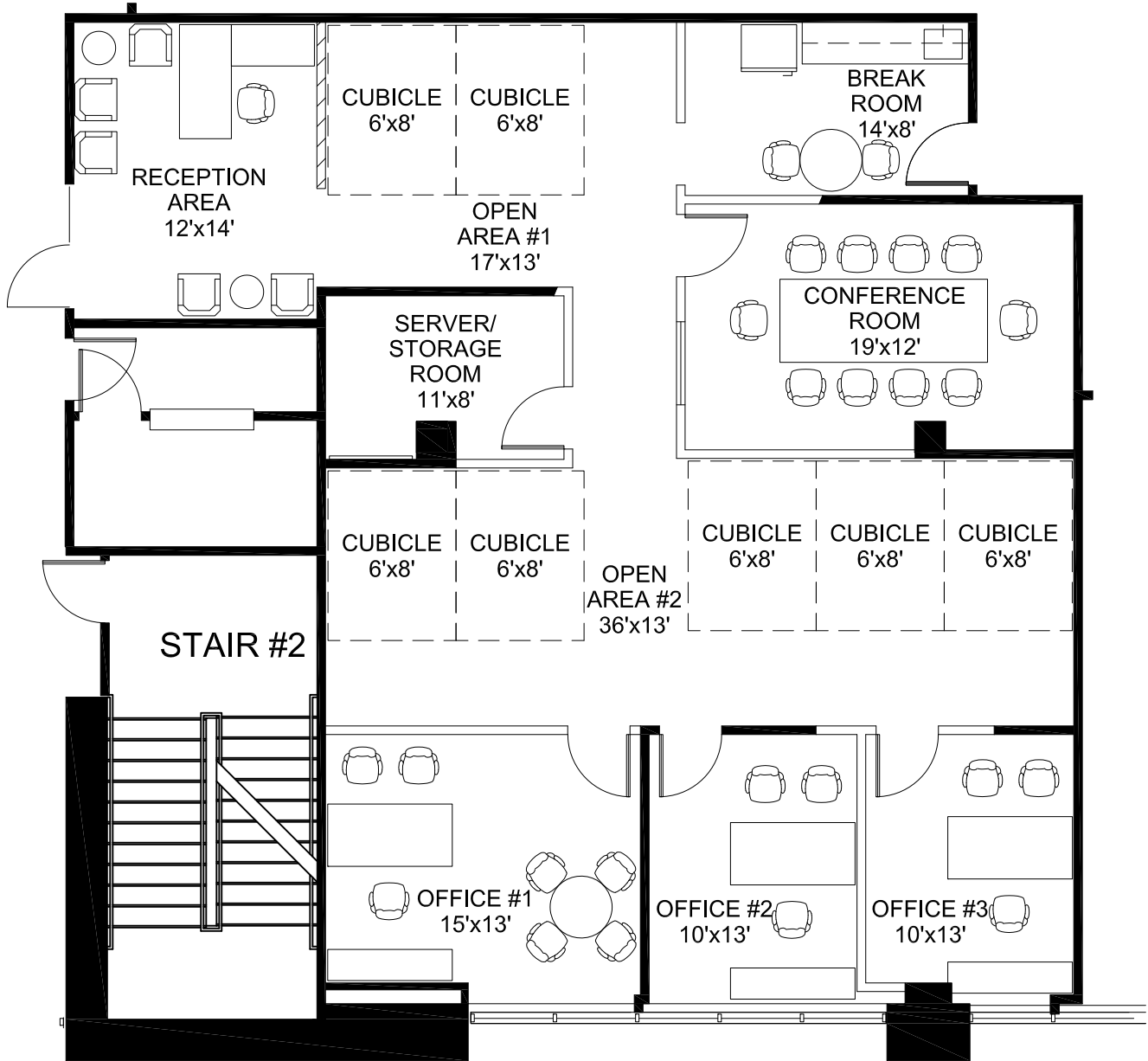


# TWIN CENTRAL OFFICE BUILDING

1401 N. Central, Richardson, Texas

## SUITE 150 SPECULATIVE SUITE SPACE PLAN 2,182 RSF OPTION "B"



— EXISTING WALLS TO REMAIN  
= NEW WALLS

### 1ST FLOOR

Scale: 1/8"=1'-0"

All dimensions and square footages are approximate.

February 23, 2026