

Project Information

Application Data
 Application Name: West Boynton Plaza
 Control Number: XXXX
 Project / Application Numbers: XXXX

Last BCC Approval Date and Resolution Numbers
 Tier: 6-16-98 / R-98-451
 A9, Reserve
 Commercial Low (CL)

Proposed Land Use
 Existing Zoning District: MURP
 Proposed Zoning District: WBCAP
 Overlay(s):
 Property Control Numbers: 00-42-43-27-05-053-0101
 00-42-43-27-05-053-0102

Existing User(s)
 Proposed User(s):
 Retail / Prof./Med. Office

Site Data
 Proposed Gross Site Area: 192,099 sf
 4.41 Ac.

Proposed Building Area
 Retail: 38,463 sf
 Prof./Med. Office: 8,500 sf
 29,963 sf

Gross Floor Area Ratio: Max 0.20 Proposed 0.20 FAR
 Building Coverage: 23,482 sf 12.2%

Parking Data
 Parking Required - Total Spaces: 192
 All Uses: 1 sp. per 200 sf

Parking Provided - Total Spaces
 HC Parking - Spaces: 228
 Required: 7
 Provided: 8
 Loading Spaces: 2
 Required: 2
 Provided: 2

Miscellaneous Data
 Max. Building Height: 35 ft.
 Traffic Analysis Zone (TAZ): 19,054 sf
 Dry Detention Area: 0.44 Ac.

Concurrency Approval*
 Retail: 8,500 sf
 Medical Office: 29,963 sf

Concurrency for project is as shown on the Site Plan

Property Use	Sq. Ft./Units
Retail	8,500 sf
Medical Office	29,963 sf

Property Use Requirements

Zoning Dist./Pod	Min. Lot Dimensions	Density /GFA	FAR	Bldg. Cover.	Front Setback (East)	Side Setback (West)	Rear Setback (West)
MURP	Size: 3.0 AC, Depth: 200'	20%	20%	25%	25'	30'	30'
Proposed	5.29 AC, 329.98' x 719.4'	20%	12.7%	13%	61'	93'	223'

Location Map

1) This plan is based on survey information provided by Caulfield & Wheeler dated 8.29.15.
 2)



Key

(Symbol)	(Symbol)	(Symbol)	(Symbol)
(Symbol)	(Symbol)	(Symbol)	(Symbol)
(Symbol)	(Symbol)	(Symbol)	(Symbol)
(Symbol)	(Symbol)	(Symbol)	(Symbol)

Amendments

(Symbol)	(Symbol)	(Symbol)	(Symbol)
(Symbol)	(Symbol)	(Symbol)	(Symbol)
(Symbol)	(Symbol)	(Symbol)	(Symbol)
(Symbol)	(Symbol)	(Symbol)	(Symbol)

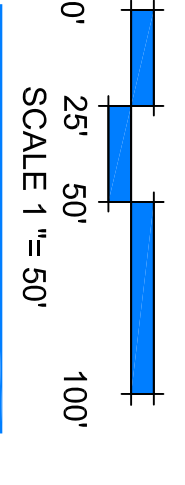
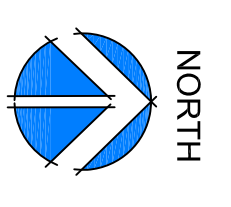
Approval Stamp

MILLER LAND PLANNING, INC.
 508 E. Boynton Beach Blvd.
 Boynton Beach, FL 33435
 (561) 736-8838

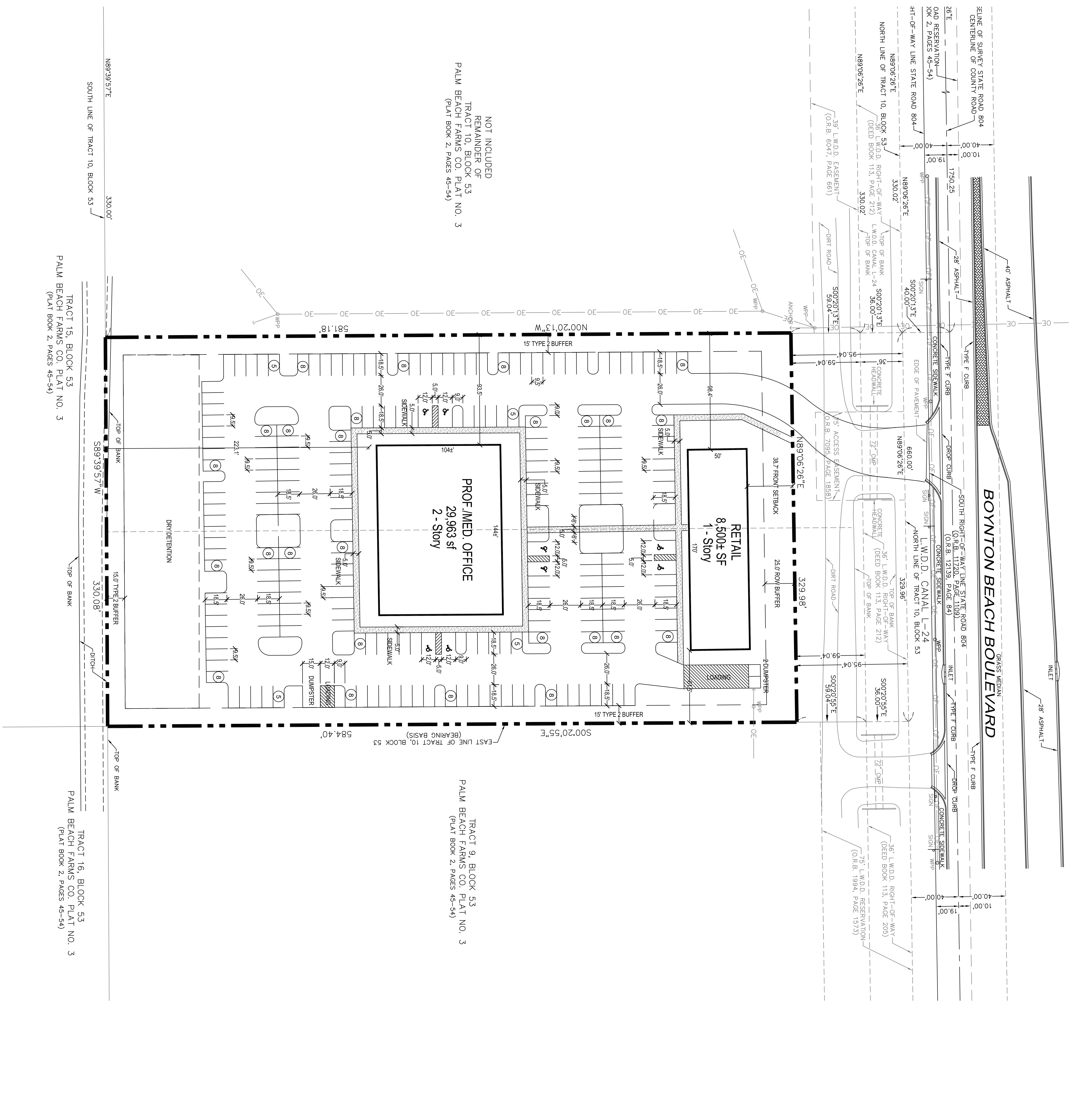
West Boynton Plaza
 Palm Beach County, FL

Date/Revisions

02.11.16	
----------	--



PRELIMINARY SITE PLAN
 PSP-1 of 1



NOT INCLUDED
 REMAINDER OF
 TRACT 10, BLOCK 53
 PALM BEACH FARMS CO. PLAT NO. 3
 (PLAT BOOK 2, PAGES 45-54)

TRACT 9, BLOCK 53
 PALM BEACH FARMS CO. PLAT NO. 3
 (PLAT BOOK 2, PAGES 45-54)

TRACT 15, BLOCK 53
 PALM BEACH FARMS CO. PLAT NO. 3
 (PLAT BOOK 2, PAGES 45-54)

TRACT 16, BLOCK 53
 PALM BEACH FARMS CO. PLAT NO. 3
 (PLAT BOOK 2, PAGES 45-54)