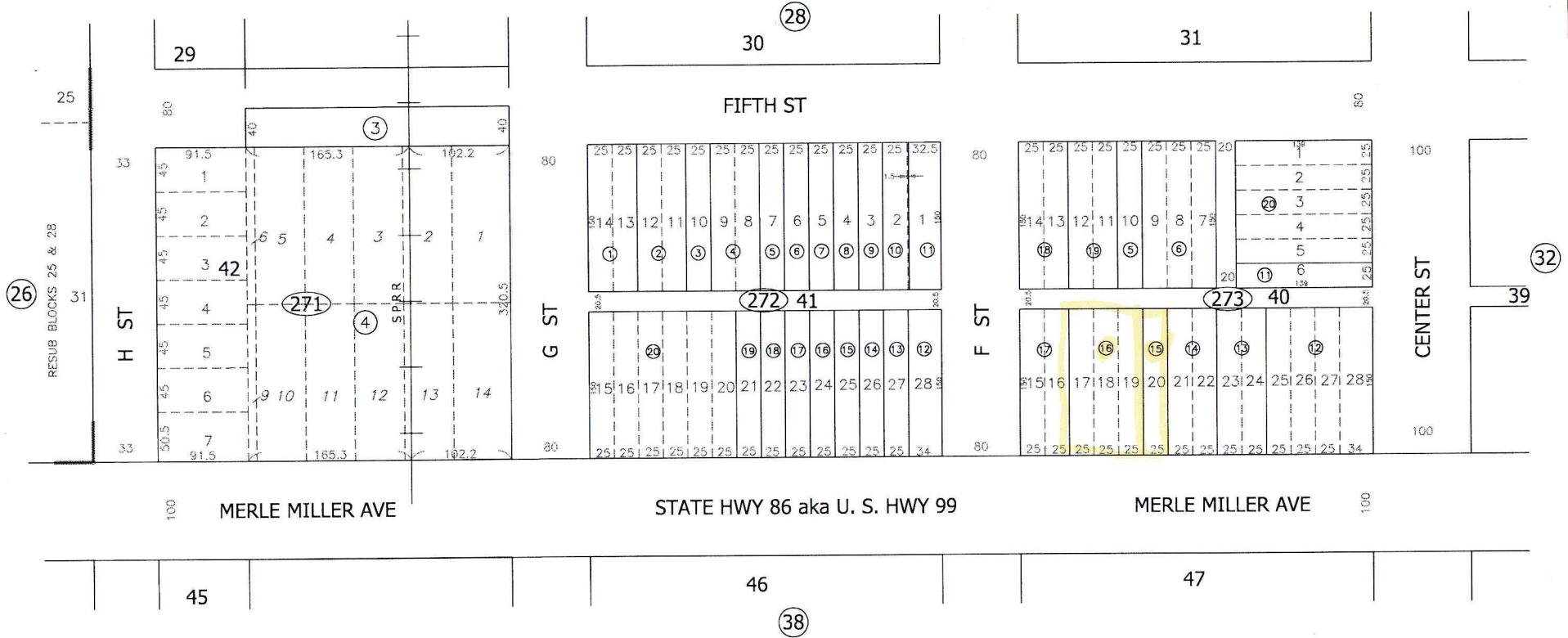


POR RESUB OF TOWNSITE OF WESTMORLAND

OM 3-54
ROS 9-13

Tax Area Code
7-005

35-27



- 05-20-08 MF
- 11-14-01 AR
- 10-26-99 RM
- 6-27-96 DP
- 5-7-90 RM
- 10-3-89 RM
- 11-15-77 DM
- 11-14-22 MF

DISCLAIMER:
THIS IS NOT AN OFFICIAL MAP.
THIS MAP WAS CREATED FOR THE IMPERIAL COUNTY
ASSESSOR, FOR THE SOLE PURPOSE OF AIDING IN
THE PERFORMANCE OF THE DUTIES OF THE ASSESSOR.
ANY ERRORS OR OMISSIONS IN THIS MAP ARE NOT
THE RESPONSIBILITY OF THE COUNTY OF IMPERIAL
OR THE ASSESSOR. (REV. & TAX. CODE SEC.327)

CITY OF WESTMORLAND
Assessor's Map Bk.35-Pg.27
County of Imperial, Calif.

Lot 20 is 3,750 sqft
Lot 17, 18, 19 is 11,250 sqft