

INTERIOR HANGING SIGNS - LOW CLG

1A	aisle marker - 9'-2" AFF
2A.2	checkout hanging sign (small) - 8'-0" AFF
3B	photo lugon decal
4A.2	beautiful dimensional letters (small)
4B.2	beautiful shelf & lifestyle images (small)
5A.2	well at walgreens dimensional letters (small)
5C	aloe wallcovering
6A.2	pharmacy dimensional letters (small)
6B.2	well offerings dimensional letters (small)
6N.2	pharmacy cross (small)
M	drop off + pick up sign
Q	consultation sign
6J.2	welcome message decal - horizontal
8A.2	eat well dimensional letters (small)
8C	oranges image wallcovering
10A	door kit
13B	ada tactile sign

SEE SHEETS A-121 & I-211 FOR INSTALLATION GUIDELINES AND HANGING HEIGHTS

FURNITURE LEGEND

A1.1	guest chair	4
A2	kiosk chair	2
A3.1	side chair	4
A5.1	task chair (office)	2
B2	employee room table	1

GENERAL NOTES

- GENERAL SALES AREA:**
- PLEASE PROVIDE PROPER A.D.A. CLEARANCES ON BOTH SIDES OF ALL DOORS
 - MIRROR ON REAR WALL
 - BEAUTY CORNICHE
 - SALES AREA CORNICHE (FIXTURE MOUNTED)
 - PHOTO CORNICHE (FIXTURE MTD UNLESS NOTED)
 - CARPET TILES & DESIGN LINKS FURNISHED AND INSTALLED BY WALGREENS (WHEN SHOWN)
 - MASTER-BILT REACH-IN REFRIGERATION: MODEL TEM - ENDLESS REACH-IN REFRIGERATORS AND MODEL TEL - ENDLESS REACH-IN FREEZERS (ADD 2" AT EACH END, FOR END PANELS)
 - A. 1 TEM-5-30: 155"W X 37 3/4"D X 80"H
 - B. 1 TEM-4-30: 124 1/2"W X 37 3/4"D X 80"H
 - C. 1 TEL-4-30: 124 1/2"W X 37 3/4"D X 80"H
 - SMB SERIES - SELF CONTAINED SLIDING DOOR REFRIGERATORS
 - E. SMB-80: 70"W X 32 1/4"D X 76 1/2"H
 - F. SMB-40: 52"W X 36 3/4"D X 80 1/2"H
 - G. 1 TAF-48HD: 52"W X 35 3/4"D X 80 1/2"H
 - MASTER-BILT WALK-IN COOLER: PROVIDE
 - #100R COOLMASTER DOORS 28 3/4" X 73" EACH AND
 - #100FR FREEZEMASTER DOORS 26 3/8" X 73" EACH BY ANTHONY
 - DOOR(S): FOR EACH DOOR PROVIDE (7) 10 BEV-Q FLOW GRAVITY SHELVES; UPPER (5) WITH SLIDES AND LOWER (2) WITH ROLLERS COMPLETE WITH UPRIGHTS
 - DOOR(S): FOR EACH DOOR PROVIDE 36"D B-E-F NYLA-LITE SHELVING SYSTEM
 - DOOR(S): 10 ROLLER CONVEYOR AT FLOOR LEVEL
 - DOOR(S): FOR EACH DOOR PROVIDE 27"D ANTHONY SHELVES
 - DOOR(S): FOR EACH DOOR PROVIDE (2) 27"D ANTHONY SHELVES AND (4) 36"D MERCHANDISER SHELVES
 - DOOR(S): 10 DOUBLE DECK ROLLER CONVEYOR
 - ICE CHEST BY VENDOR
 - CART RAILS W/ DISPLAY SHELF & SLAT WALL ABOVE
 - PROVIDE A 6"H BLACK VINYL BASE AT ALL CHECKOUTS
 - ELECTRONIC ARTICLE SURVEILLANCE SYSTEM
- PHARMACY DEPARTMENT:**
- PATIENT SEATING AREA: (4) SEATS
 - PROVIDE FRAMING FOR 3'-0"W X 7'H OPENING FOR FUTURE DROP-OFF WINDOW
 - COMPUTER TERMINAL
 - 15A: INTERCOM PLUS TERMINAL
 - 15C: TRAINING TERMINAL (IN TRAINING ROOM)
 - RX SINK AND CABINET
 - CRX CABINET W/ LAMINATED PANEL SURROUND
 - RX REFRIGERATOR
 - PROVIDE A CARPETED FLOOR WITH RUBBER RUNNERS. RX UNDERCOUNTER INSERTS:
 - #1 - RX 3 DRAWER VIAL INSERT
 - #2 - RX 3 DRAWER FILE INSERT
 - #3 - RX OPEN INSERT
 - #4 - RX CONSULTATION COUNTER UNIT
 - #5 - RX PRINTER INSERT
 - #6 - RX 5 DRAWER FILE INSERT
 - #7 - RX OPEN INSERT WITH CPU SHELF
 - #8 - RX OPEN CABINET (39"H CNTR)
 - #9 - RX OPEN CABINET (34"H CNTR)
 - #9 - RX 10 DRAWER FILE CABINET
- OFFICE:**
- PROVIDE TILED FLOOR & VINYL WALLCOVERING
 - UNDER COUNTER SHELF UNIT
 - PRINTER
 - LATERAL FILE
 - OFFICE COMPUTERS
 - 24A: P.O.S. TERMINAL
 - 24B: AS400 TERMINAL
 - 24C: OFFICE P.C.
 - TILL LOCKER
 - SAFE
 - TV & VCR (IN TRAINING ROOM)
- STOCKROOM:**
- NEST-A-FLEX CONVEYOR
 - GRAVITY CONVEYOR
 - POWER ROLLER CONVEYOR
 - SEE ARCHITECTURAL DRAWINGS FOR EXACT LOCATION & POSITIONING OF COMPACTORS
 - 31A: TRASH COMPACTOR
 - 31B: BALER
 - 31C: CARDBOARD COMPACTOR
- EMPLOYEE ROOM:**
- EMPLOYEE LOCKERS: (1) 48"W COAT LOCKER W/ PERFORATED DOORS, (6) TIER BOX LOCKERS & (2) ADA LOCKERS W/ SAFETY VIEW DOORS
 - 5'-0"W X 2'-2"D EMPLOYEE COUNTER W/ (1) CABINET
 - EMPLOYEE ROOM REFRIGERATOR (PROVIDE 32" CLEARANCE WHEN NEXT TO COUNTER)
 - EMPLOYEE ROOM SINK (IN COUNTER)
 - (NOT USED)
- MISCELLANEOUS:**
- "E" - ELECTRICAL OUTLET FOR FUTURE USE
 - VENDOR RACKS: REMOVE BASE DECK & SHOES; (END PANEL TO REMAIN)
 - PROVIDE OPENING FOR ONE-WAY GLASS (SEE INTERIOR ELEVATION FOR LOCATION)
 - NEWSPAPER RACK BY VENDOR
 - PICTURE CARE PLUS TERMINAL
- BEAUTY:**
- LOW COST HEADER WITH OUTRIGGER
 - LOW COST HEADER

PROJECT DATA

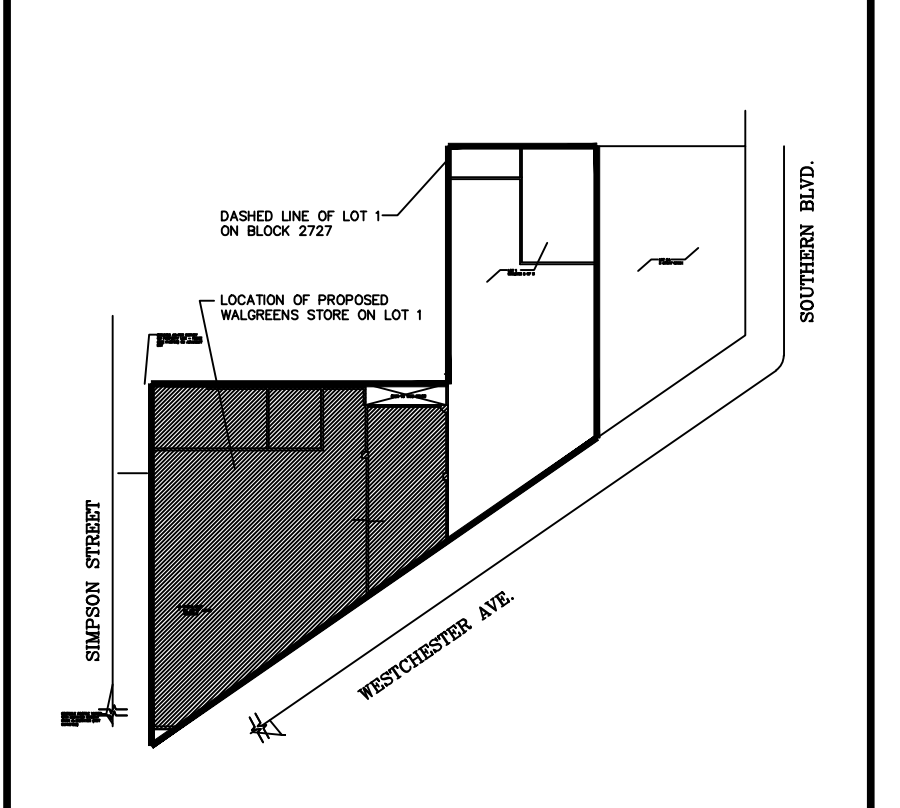
TYPE	GENERAL SALES	MARKET
NEW LOCATION	PHARMACY	SECURITY
EXIST'G BLDG	PHOTO	24 HOUR STORE
REMODEL	LIQUOR	BILINGUAL SIGNS

SQUARE FOOT AREA SUMMARY

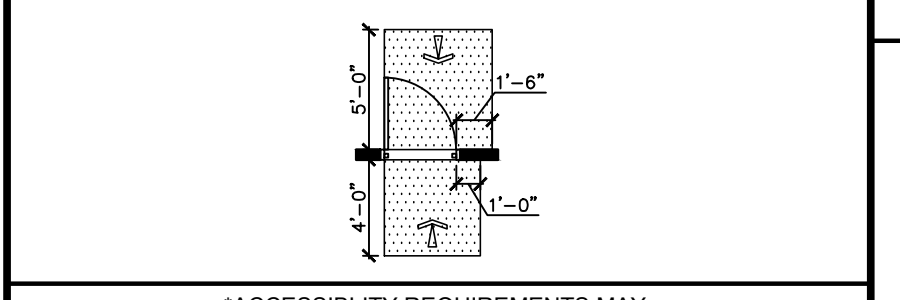
DEPARTMENT	SALES	STOCK	SERVICE	TOTAL EXIST'G	TOTAL NEW
GEN SALES	NEW 4520	0	1560		6080
MARKET	NEW 900				900
RX	NEW 639				639
RX WAIT'G	NEW 98				98
PHOTO	NEW 435				435
LIQUOR	NEW				
BSMT	NEW	6014	1889		7903
2ND FLOOR	NEW				
TOTAL NEW	6592	6014	3449		16055
TOTAL EXST'G					
TOTAL AREA: FIRST FLOOR					16055 SQ. FT.
TOTAL AREA: OTHER LEVELS					7903 SQ. FT.
GROSS AREA INCLUDING ALL DEPARTMENTS & ALL LEVELS					16055 SQ. FT.
RX SHELVING LINEAL FEET:					84 LN. FT.

TOTAL BY LINEAL FOOTAGE 715 LN. FT.

FRONT WALL SHELVING	22 LN. FT.
BEAUTY WALL SHELVING	48 LN. FT.
REMAINING WALL SHELVING (BACK & SIDE WALL, RX SEATING)	97 LN. FT.
BACK GONDOLAS	487 LN. FT.
FRONT GONDOLAS	N/A
HALLMARK SHELVING	27 LN. FT.
BEAUTY GONDOLAS	N/A
COOLERS	23 LN. FT.
FREEZERS	11 LN. FT.



KEY PLAN
NOT TO SCALE
FOR REFERENCE ONLY: SEE CONTRACT DOCUMENTS FOR DETAILED SITE PLAN



*ACCESSIBILITY REQUIREMENTS MAY VARY WITH LOCAL JURISDICTIONS & APPROACH TO DOOR SWING

FIXTURE LEGEND

G	GONDOLA (EA. SIDE)	1818	36	66"
GE	GONDOLA	18	39	66"
END				
WS	WALL SHLVG	18	36	84"

ALL OTHER FIXTURES ARE TYPICALLY CALLED OUT DEPTH BY WIDTH. EXAMPLE:
DT 30 48
DISPLAY D. W.
TABLE

*DOES NOT INCLUDE STANDARDS, WOOD GROUNDS OR FINISHED END PANELS

EXECUTIVE APPROVAL		DATE
VICE PRESIDENT FACILITIES DEVELOPMENT		
CORPORATE OPERATIONS VICE PRESIDENT	J.FOLEY	1/31/07
MARKET VICE PRESIDENT		
REVIEWED BY:	DBA	EB

Walgreens
FACILITIES PLANNING
DESIGN AND ENGINEERING
DEERFIELD, IL 60015-5105

THIS PLAN AND SPECIFICATIONS WERE PREPARED BY ME OR UNDER MY DIRECT SUPERVISION AND THAT I AM A DULY REGISTERED ARCHITECT OR ENGINEER IN THE STATE OF NEW YORK AND SIGNIFIED BY MY HAND AND SEAL.

NO.	DATE	BY	DESCRIPTION	REVISIONS
16	01/16/18	JH	FT18 AUTOMATION RELOCATION	
			SEE PREVIOUS D111 FOR PRIOR/OUTDATED REVISION NOTES	

PROJECT ID: N89765
STORE NUMBER: 10911
WALGREENS
1041 WESTCHESTER
BRONX, NEW YORK
AUTOMATION RELOCATION

FILE NAME: 10911-D1-28-16JAN18
DRAWN BY: J. WLET - RSP
DATE: 1/24/07
REVIEWED: P. PETROVA

D1