



**MARTIN
COMMERCIAL
GROUP**

Commercial Real Estate Services



AVAILABLE FOR LEASE

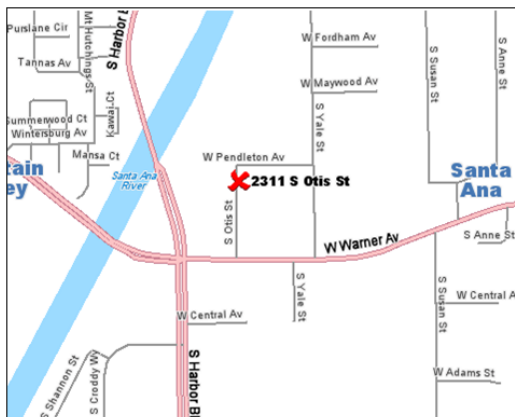
OFFICE / WAREHOUSE SUITES FROM 1,000 - 1,250 SQ. FT.



2311 - 2337 S. Otis St. & 3602 - 3628 W. Pendleton Ave~ Santa Ana

Features:

- Units From 1,000 - 1,250 Sq. Ft.
- 100A - 200A 3P Power (Verify)
- 10'x10' GL Loading Doors
- Near Harbor / Warner Intersection
- Individual Tenant Signs
- Professionally Managed



**For More Information
Please Contact:**

SAM GREEK
sgreek@mcgre.com
DRE # 01240614

LORI MCAMIS
lmcamis@mcgre.com
DRE # 01873441

714.241.1141

1495 E. Warner Avenue
Santa Ana, CA 92705

*Since 1953...
Orange County ~ Inland Empire*

The information contained herein has been obtained from sources we deem reliable. While we have no reason to doubt its accuracy, we do not guarantee it.



**MARTIN
COMMERCIAL
GROUP**

Commercial Real Estate Services



**For More Information
Please Contact:**

SAM GREEK

sgreek@mcgre.com
DRE # 01240614

LORI MCAMIS

lmcamis@mcgre.com
DRE # 01873441

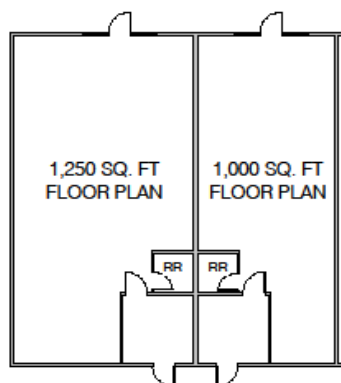
714.241.1141

1495 E. Warner Avenue
Santa Ana, CA 92705

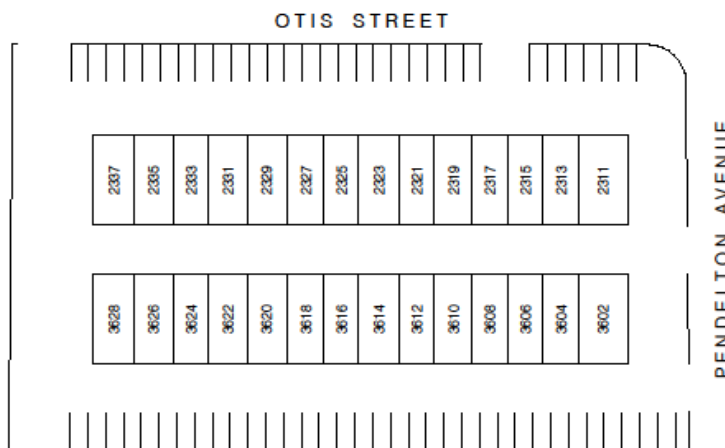
*Since 1953...
Orange County ~ Inland Empire*

**2311-2337 S. Otis Street & 3602-3628 W. Pendleton Avenue
Santa Ana, CA
Office/Warehouse Suites from 1,000 - 1,250 sq. ft.**

**2311 - 2337 Otis Street
3602 - 3628 Pendelton Avenue
Santa Ana, CA**



Sample Floor Plan



Site Plan



WWW.MCGRE.COM