

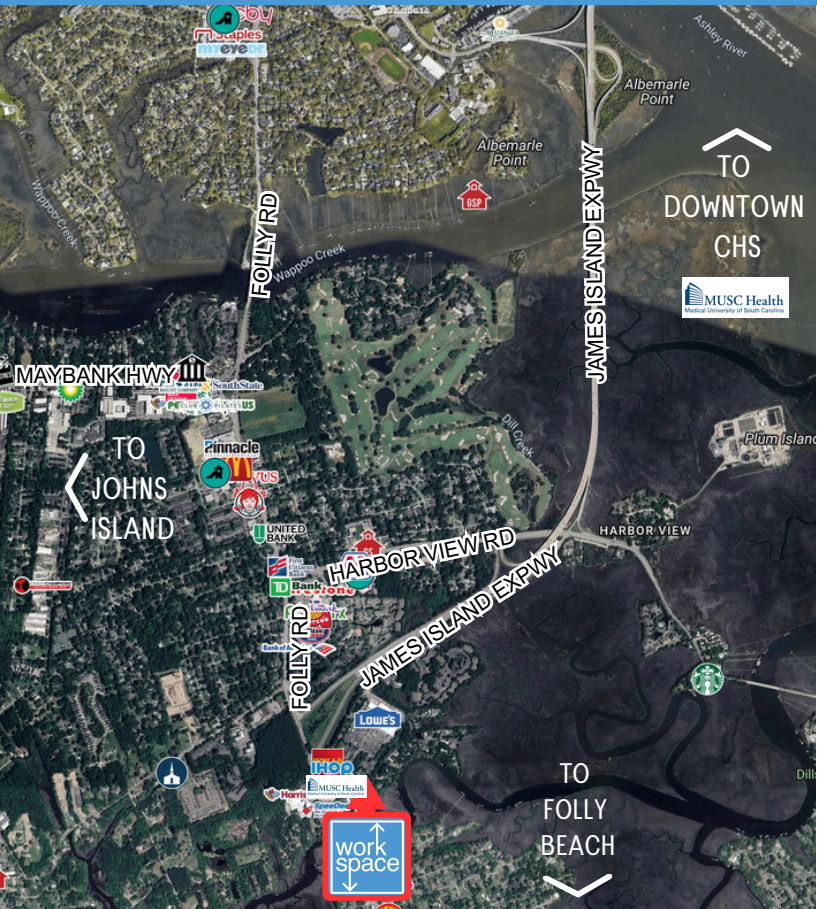


Ellis Oaks Office Park

656 Ellis Oak Ave, First Floor, Charleston, SC 29412



EXECUTIVE OFFICES, DEDICATED DESKS AND HOT DESKS
OFF THE JAMES ISLAND CONNECTOR



- Newly built contemporary building in James Island's Ellis Oaks Office Park, full of natural light, creek views, modern aesthetics and on-site parking
- Well-located waterfront property one traffic light off of the James Island Connector
- Extremely convenient to downtown Charleston, Charleston Medical District, the Medical University of South Carolina and College of Charleston

• **Rent includes:**

- | | |
|--------------------------|--------------------------|
| ✓ Electricity | ✓ Kitchenette |
| ✓ Water/sewer | ✓ Janitorial |
| ✓ High speed wifi | ✓ Restrooms |
| ✓ 24/7 Access | ✓ Security systems |
| ✓ Shared Conference room | ✓ On-site parking |
| ✓ Phone booths | ✓ Use of mailing address |

Contact

Leigh Lingo | Associate

workspace@twinriverscap.com 302.519.5331

workspacechs.com

Executive Suites, Co-Working Spaces, Hot Desks





Ellis Oaks Office Park

656 Ellis Oak Ave, First Floor, Charleston, SC 29412

HOT DESKS

- ✓ FLOATING WORKSPACE
(available in cafe area, community table, lounge area, and various bar tables)
- ✓ USE OF PHONE BOOTHS
- ✓ STORAGE LOCKER
- ✓ À LA CARTE OPTIONS:
- ✓ Mailing Address
- ✓ Access to Conference Room

DEDICATED DESK

- ✓ DEDICATED DESK SPACE
- ✓ PRIVATE, LOCKABLE FILE CABINET
- ✓ USE OF PHONE BOOTHS
- ✓ USE OF CONFERENCE ROOM
5 Hours per Month
(rent includes one use/month; additional conference room time is available for a fee)
- ✓ STORAGE LOCKER
- ✓ USE OF MAILING ADDRESS

EXECUTIVE OFFICE SUITES

- ✓ SUITES OFFERED AS:
Individual Offices
In Combination as
Multi-Room Office Configurations
- ✓ USE OF CONFERENCE ROOM
8 Hours per Month
(additional conference room time available for a fee)
- ✓ USE OF MAILING ADDRESS
- ✓ FURNISHED OPTION
Office can be furnished with power stand-up desk workstation for an additional fee

Contact

Leigh Lingo | Associate

workspace@twinriverscap.com 302.519.5331

workspacechs.com

Executive Suites, Co-Working Spaces, Hot Desks





Ellis Oaks Office Park

656 Ellis Oak Ave, First Floor, Charleston, SC 29412



EXECUTIVE OFFICES, DEDICATED DESKS AND HOT DESKS
OFF THE JAMES ISLAND CONNECTOR

